



[Go to Product page](#)

Datasheet for ABIN7073941

## anti-FGF11 antibody

### 6 Images

#### Overview

Quantity:	100 µL
Target:	FGF11
Reactivity:	Mouse, Rat
Host:	Rabbit
Clonality:	Polyclonal
Conjugate:	This FGF11 antibody is un-conjugated
Application:	Immunohistochemistry (IHC), Immunofluorescence (IF)

#### Product Details

Immunogen:	KLH conjugated Synthetic peptide corresponding to Mouse FGF11
Cross-Reactivity:	Rat
Purification:	Affinity purification

#### Target Details

Target:	FGF11
Alternative Name:	FGF11 ( <a href="#">FGF11 Products</a> )
Background:	The protein encoded by this gene is a member of the fibroblast growth factor (FGF) family. FGF family members possess broad mitogenic and cell survival activities, and are involved in a variety of biological processes, including embryonic development, cell growth, morphogenesis, tissue repair, tumor growth and invasion. The function of this gene has not yet been determined. The expression pattern of the mouse homolog implies a role in nervous system

## Target Details

development.

Gene ID: 14166

UniProt: [P70378](#)

## Application Details

Application Notes: IHC/IF (M,R) 1:1000-1:3000/1:750-1:2000

Restrictions: For Research Use only

## Handling

Format: Liquid

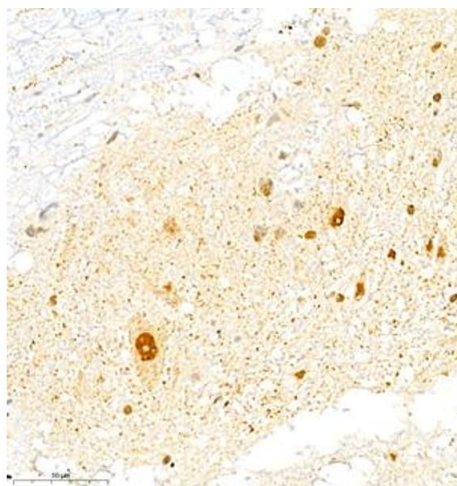
Buffer: PBS, pH 7.4, 0.02 % sodium azide

Preservative: Sodium azide

Precaution of Use: This product contains Sodium azide: a POISONOUS AND HAZARDOUS SUBSTANCE which should be handled by trained staff only.

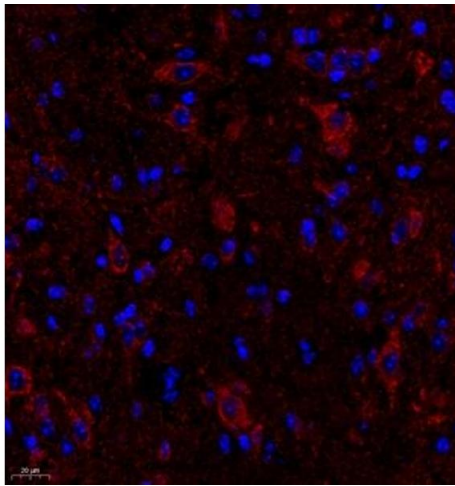
Storage: -20 °C

## Images



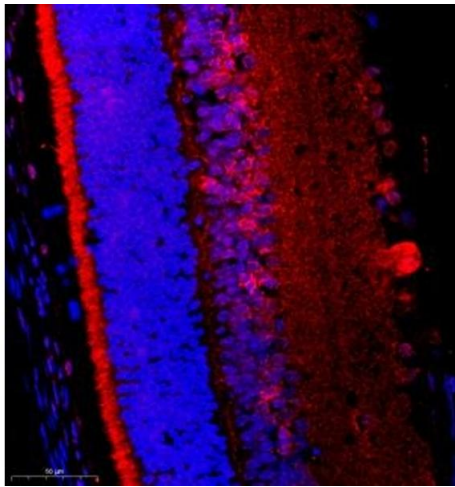
### Immunohistochemistry (Paraffin-embedded Sections)

**Image 1.** Immunohistochemistry of paraffin embedded rat spinal cord using FGF11 (ABIN7073941) at dilution of 1:2200 (400x lens)



#### Immunofluorescence (Paraffin-embedded Sections)

**Image 2.** Immunofluorescence of paraffin embedded mouse spinal cord using FGF11 (ABIN7073941) at dilution of 1:2200 (400x lens)



#### Immunofluorescence (Paraffin-embedded Sections)

**Image 3.** Immunofluorescence of paraffin embedded rat eye using FGF11 (ABIN7073941) at dilution of 1:2200 (400x lens)

Please check the [product details page](#) for more images. Overall 6 images are available for ABIN7073941.