

Datasheet for ABIN7074034

anti-GTF2B antibody

7 Images

[Go to Product page](#)

Overview

Quantity:	100 µL
Target:	GTF2B
Reactivity:	Human, Mouse, Rat
Host:	Rabbit
Clonality:	Polyclonal
Conjugate:	This GTF2B antibody is un-conjugated
Application:	Western Blotting (WB), Immunohistochemistry (IHC), Immunofluorescence (IF)

Product Details

Immunogen:	Recombinant protein corresponding to Mouse TFIIB
Cross-Reactivity:	Human, Rat
Purification:	Affinity purification

Target Details

Target:	GTF2B
Alternative Name:	TFIIB (GTF2B Products)
Background:	General transcription factor that plays a role in transcription initiation by RNA polymerase II (Pol II). Involved in the pre-initiation complex (PIC) formation and Pol II recruitment at promoter DNA .Together with the TATA box-bound TBP forms the core initiation complex and provides a bridge between TBP and the Pol II-TFIIF complex .Released from the PIC early following the onset of transcription during the initiation and elongation transition and reassociates with TBP

Target Details

during the next transcription cycle . Associates with chromatin to core promoter- specific regions .Binds to two distinct DNA core promoter consensus sequence elements in a TBP-independent manner,Modulates transcription start site selection . Exhibits also autoacetyltransferase activity that contributes to the activated transcription .

Molecular Weight: 35 kDa

Gene ID: 229906

NCBI Accession: [NP_663521](#)

UniProt: [P62915](#)

Application Details

Application Notes: WB (H,M,R) 1: 500-1: 1000, IHC/IF (H,M,R) 1:500-1:1500/1:500-1:1000

Restrictions: For Research Use only

Handling

Format: Liquid

Buffer: PBS, pH 7.4, 0.02 % sodium azide

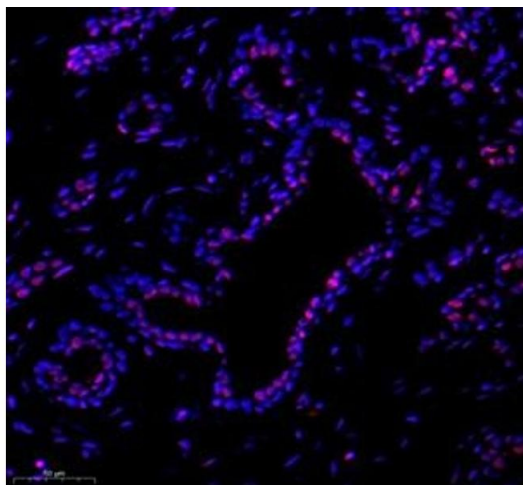
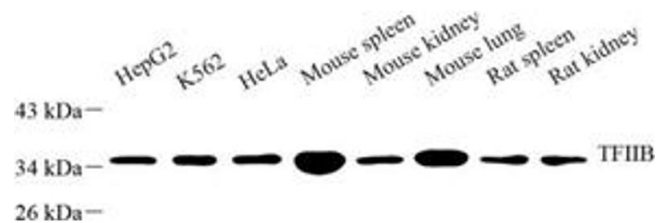
Preservative: Sodium azide

Precaution of Use: This product contains Sodium azide: a POISONOUS AND HAZARDOUS SUBSTANCE which should be handled by trained staff only.

Storage: -20 °C

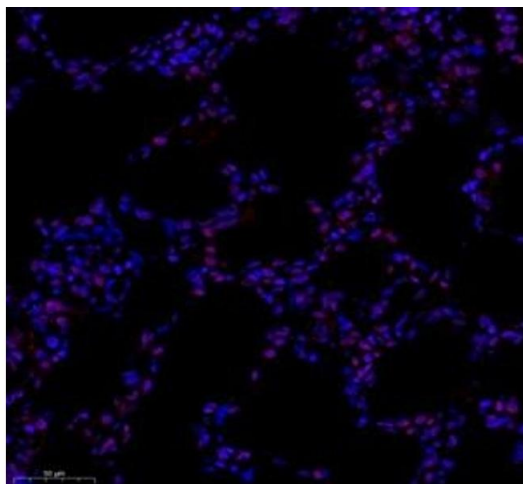
Western Blotting

Image 1. Western blot analysis of tfiib (ABIN7074034) at dilution of 1: 500



Immunofluorescence (Paraffin-embedded Sections)

Image 2. Immunofluorescence of paraffin embedded human breast cancer using tfiib (ABIN7074034) at dilution of 1: 500 (300x lens)



Immunofluorescence (Paraffin-embedded Sections)

Image 3. Immunofluorescence of paraffin embedded rat lung using tfiib (ABIN7074034) at dilution of 1: 500 (300x lens)

Please check the [product details page](#) for more images. Overall 7 images are available for ABIN7074034.