



Datasheet for ABIN7074040

## anti-Ghrelin antibody



[Go to Product page](#)

### 4 Images

#### Overview

|              |   |
|--------------|---|
| Quantity:    | 100 µL  |
| Target:      | Ghrelin (GHRL)                                      |
| Reactivity:  | Rat, Mouse  |
| Host:        | Rabbit  |
| Clonality:   | Polyclonal  |
| Conjugate:   | This Ghrelin antibody is un-conjugated              |
| Application: | Immunohistochemistry (IHC), Immunofluorescence (IF) |

#### Product Details

|                   |  |
|-------------------|--|
| Immunogen:        | Recombinant protein corresponding to Mouse Ghrelin |
| Cross-Reactivity: | Rat  |
| Purification:     | Affinity purification                              |

#### Target Details

|                   |  |
|-------------------|--|
| Target:           | Ghrelin (GHRL)   |
| Alternative Name: | Ghrelin ( <a href="#">GHRL Products</a> )  |
| Background:       | Ghrelin, the "hunger hormone", also known as lenomorelin (INN), is a peptide hormone produced by ghrelinergic cells in the gastrointestinal tract, which functions as a neuropeptide in the central nervous system. Besides regulating appetite, ghrelin also plays a significant role in regulating the distribution and rate of use of energy. When the stomach is empty, ghrelin is absorbed. When the stomach is stretched, secretion stops. |

## Target Details

---

Gene ID: 58991

NCBI Accession: [NP\\_001273333](#)

UniProt: [Q9EQX0](#)

Pathways: [Positive Regulation of Peptide Hormone Secretion](#), [Hormone Transport](#), [Peptide Hormone Metabolism](#), [Negative Regulation of Hormone Secretion](#), [Synaptic Membrane](#), [Feeding Behaviour](#)

## Application Details

---

Application Notes: IHC/IF (M,R) 1:500-1:3000/1:500-1:1000

Restrictions: For Research Use only

## Handling

---

Format: Liquid

Buffer: PBS, pH 7.4, 0.02 % sodium azide

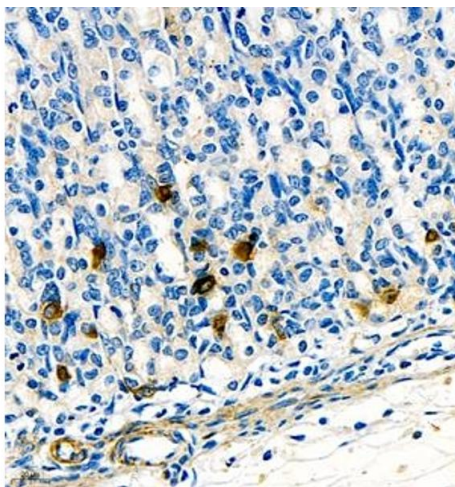
Preservative: Sodium azide

Precaution of Use: This product contains Sodium azide: a POISONOUS AND HAZARDOUS SUBSTANCE which should be handled by trained staff only.

Storage: -20 °C

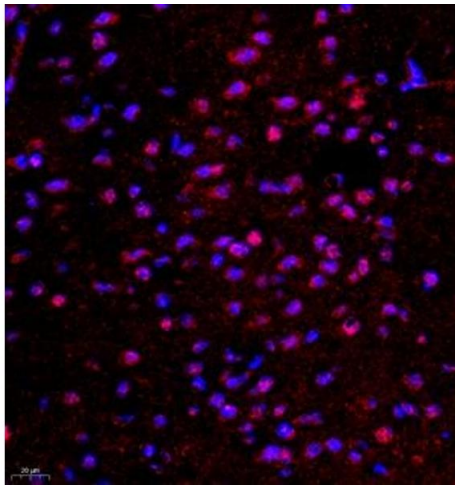
## Images

---



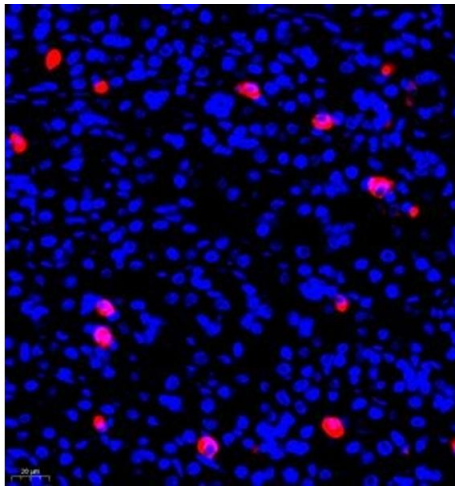
### Immunohistochemistry (Paraffin-embedded Sections)

**Image 1.** Immunohistochemistry of paraffin embedded rat stomach using ghrelin (ABIN7074040) at dilution of 1:1500 (400x lens)



**Immunofluorescence (Paraffin-embedded Sections)**

**Image 2.** Immunofluorescence of paraffin embedded mouse brain using ghrelin (ABIN7074040) at dilution of 1:500 (400x lens)



**Immunofluorescence (Paraffin-embedded Sections)**

**Image 3.** Immunofluorescence of paraffin embedded rat stomach using ghrelin (ABIN7074040) at dilution of 1:500 (400x lens)

Please check the [product details page](#) for more images. Overall 4 images are available for ABIN7074040.