

Datasheet for ABIN7074041

anti-GINS2 antibody**3** Images[Go to Product page](#)

Overview

Quantity:	100 µL
Target:	GINS2
Reactivity:	Human, Mouse
Host:	Rabbit
Clonality:	Polyclonal
Conjugate:	This GINS2 antibody is un-conjugated
Application:	Immunohistochemistry (IHC), Immunofluorescence (IF)

Product Details

Immunogen:	KLH conjugated Synthetic peptide corresponding to Mouse GINS2
Cross-Reactivity:	Human
Purification:	Affinity purification

Target Details

Target:	GINS2
Alternative Name:	GINS2 (GINS2 Products)
Background:	INS2, also named as DNA replication complex GINS protein PSF2, CGI-122, DC5, or HSPC037, is a 185 amino acid protein, which belongs to the GINS2/PSF2 family. The GINS complex plays an essential role in the initiation of DNA replication, and progression of DNA replication forks. GINS complex seems to bind preferentially to single-stranded DNA. GINS2 is a part of the the GINS complex, an integral component of the replicative helicase machinery that facilitates

Target Details

	progression of the replisome complex.
Gene ID:	272551
UniProt:	Q9D600
Pathways:	DNA Replication, Synthesis of DNA

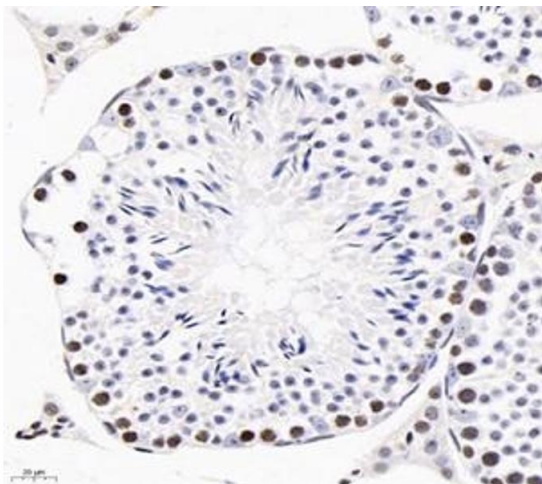
Application Details

Application Notes:	IHC/IF (H,M) 1:1500-1:3000
Restrictions:	For Research Use only

Handling

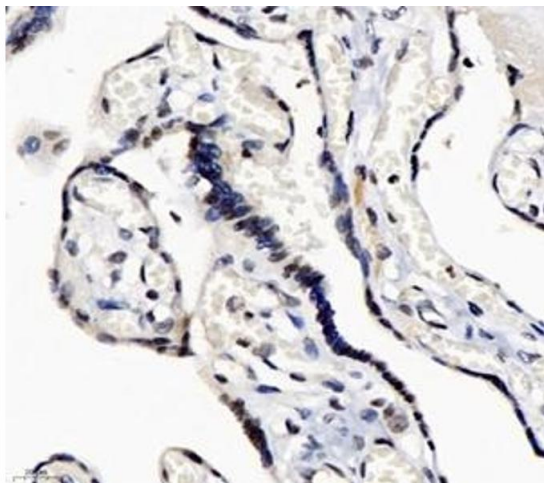
Format:	Liquid
Buffer:	PBS, pH 7.4, 0.02 % sodium azide
Preservative:	Sodium azide
Precaution of Use:	This product contains Sodium azide: a POISONOUS AND HAZARDOUS SUBSTANCE which should be handled by trained staff only.
Storage:	-20 °C

Images



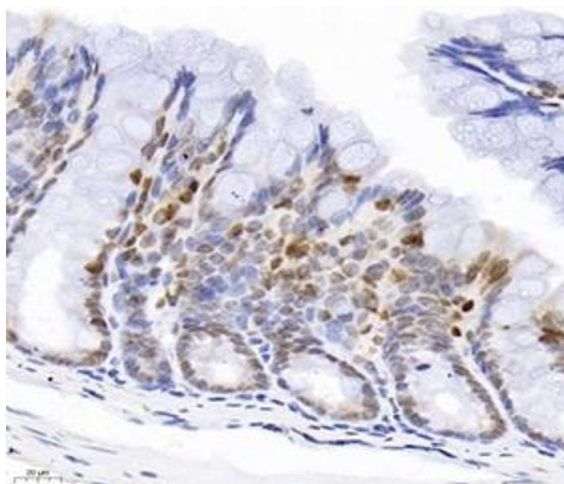
Immunohistochemistry (Paraffin-embedded Sections)

Image 1. Immunohistochemistry analysis of paraffin-embedded mouse testis using GINS2 (ABIN7074041) at dilution of 1: 3000



Immunohistochemistry (Paraffin-embedded Sections)

Image 2. Immunohistochemistry analysis of paraffin-embedded human placenta using GINS2 (ABIN7074041) at dilution of 1: 3000



Immunohistochemistry (Paraffin-embedded Sections)

Image 3. Immunohistochemistry analysis of paraffin-embedded mouse colon using GINS2 (ABIN7074041) at dilution of 1: 3000