

Datasheet for ABIN7074052
anti-GLP-1 antibody



[Go to Product page](#)

1 Image

Overview

Quantity:	100 µL
Target:	GLP-1
Reactivity:	Rat, Mouse
Host:	Rabbit
Clonality:	Polyclonal
Conjugate:	This GLP-1 antibody is un-conjugated
Application:	Western Blotting (WB)

Product Details

Immunogen:	KLH conjugated Synthetic peptide corresponding to Mouse GLP1
Cross-Reactivity:	Rat
Purification:	Affinity purification

Target Details

Target:	GLP-1
Alternative Name:	GLP1 (GLP-1 Products)
Background:	Glucagon is a 29-amino acid peptide hormone secreted from the pancreatic alpha cells with a powerful stimulatory effect on hepatic glucose production acting to increase plasma glucose levels. Glucagon is best known as the counter-regulatory hormone to insulin, and normal glucose homeostasis depends largely on the balanced secretion of insulin and glucagon from the pancreatic beta and alpha cells, respectively. The regulation of glucose metabolism by

Target Details

glucagon is mediated by its direct action on the peripheral tissues such as the liver and also by the brain. Glucagon is also released postprandially in a transient manner, which was shown to be involved in inhibition of food intake via reduction of meal size.

Molecular Weight: 20 kDa

Gene ID: 14526

UniProt: [P55095](#)

Application Details

Application Notes: WB (M,R) 1:500-1:800

Restrictions: For Research Use only

Handling

Format: Liquid

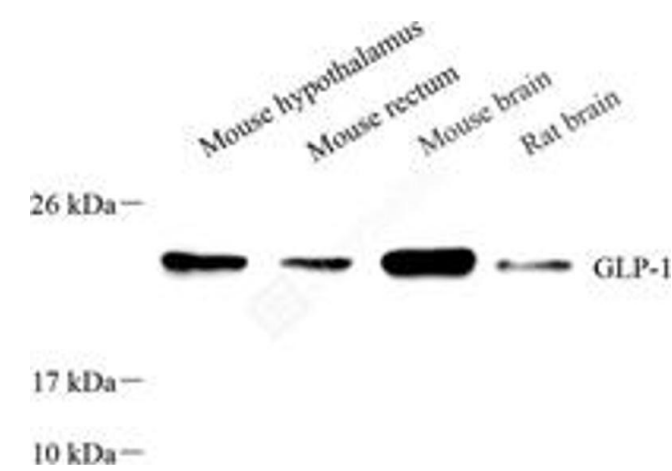
Buffer: PBS, pH 7.4, 0.02 % sodium azide

Preservative: Sodium azide

Precaution of Use: This product contains Sodium azide: a POISONOUS AND HAZARDOUS SUBSTANCE which should be handled by trained staff only.

Storage: -20 °C

Images



Western Blotting

Image 1. Western blot analysis of GLP1 (ABIN7074052),at dilution of 1: 800