

Datasheet for ABIN7074062

anti-GBA antibody

5 Images

[Go to Product page](#)

Overview

Quantity:	100 µL
Target:	GBA
Reactivity:	Mouse, Rat
Host:	Rabbit
Clonality:	Polyclonal
Conjugate:	This GBA antibody is un-conjugated
Application:	Immunohistochemistry (IHC), Immunofluorescence (IF)

Product Details

Immunogen:	KLH conjugated Synthetic peptide corresponding to Mouse GBA
Cross-Reactivity:	Rat
Purification:	Affinity purification

Target Details

Target:	GBA
Alternative Name:	GBA (GBA Products)
Background:	The GBA is a glucosylceramidase that catalyzes, within the lysosomal compartment, the hydrolysis of glucosylceramide/GlcCer into free ceramide and glucose. Thereby, plays a central role in the degradation of complex lipids and the turnover of cellular membranes . Through the production of ceramides, participates to the PKC-activated salvage pathway of ceramide formation. Also plays a role in cholesterol metabolism . May either catalyze the glucosylation of

Target Details

cholesterol, through a transglucosylation reaction that transfers glucose from glucosylceramide to cholesterol . The short chain saturated C8:0-GlcCer and the mono-unsaturated C18:0-GlcCer being the most effective glucose donors for that transglucosylation reaction. Under specific conditions, may alternatively catalyze the reverse reaction, transferring glucose from cholesteryl-beta-D-glucoside to ceramide. Finally, may also hydrolyze cholesteryl-beta-D-glucoside to produce D-glucose and cholesterol .

Gene ID: 14466

NCBI Accession: [NP_001070879](#)

UniProt: [P17439](#)

Pathways: [Cellular Glucan Metabolic Process](#)

Application Details

Application Notes: IHC/IF (M,R) 1:1000-1:2000/1:500-1:1000

Restrictions: For Research Use only

Handling

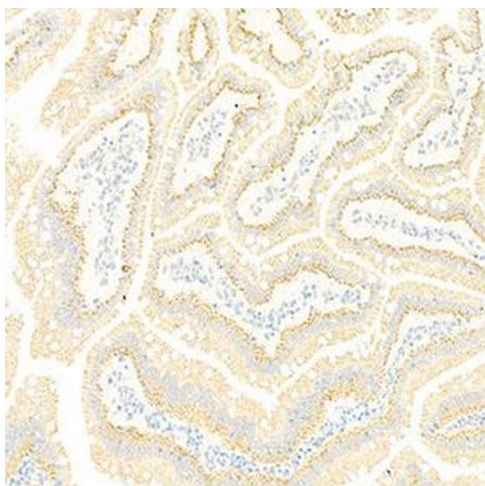
Format: Liquid

Buffer: PBS, pH 7.4, 0.02 % sodium azide

Preservative: Sodium azide

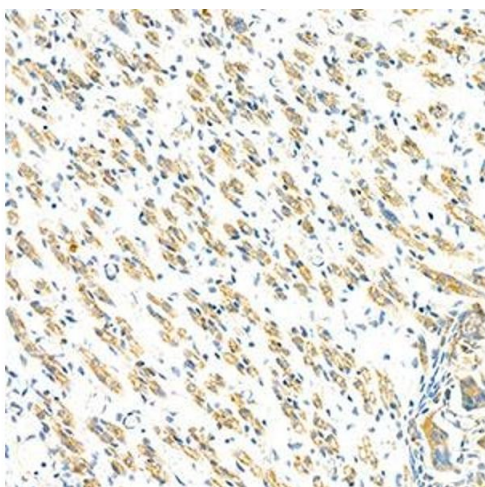
Precaution of Use: This product contains Sodium azide: a POISONOUS AND HAZARDOUS SUBSTANCE which should be handled by trained staff only.

Storage: -20 °C



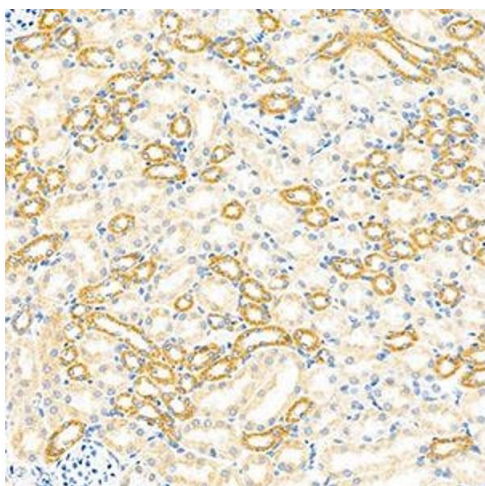
Immunohistochemistry (Paraffin-embedded Sections)

Image 1. Immunohistochemistry analysis of paraffin-embedded rat small intestine using GBA (ABIN7074062) at dilution of 1: 2000



Immunohistochemistry (Paraffin-embedded Sections)

Image 2. Immunohistochemistry analysis of paraffin-embedded mouse fetal rat using GBA (ABIN7074062) at dilution of 1: 2000



Immunohistochemistry (Paraffin-embedded Sections)

Image 3. Immunohistochemistry analysis of paraffin-embedded mouse kidney using GBA (ABIN7074062) at dilution of 1: 2000

Please check the [product details page](#) for more images. Overall 5 images are available for ABIN7074062.