

Datasheet for ABIN7074096

anti-GK2 antibody

3 Images

[Go to Product page](#)

Overview

Quantity:	100 µL
Target:	GK2
Reactivity:	Rat, Mouse
Host:	Rabbit
Clonality:	Polyclonal
Conjugate:	This GK2 antibody is un-conjugated
Application:	Western Blotting (WB), Immunohistochemistry (IHC), Immunofluorescence (IF)

Product Details

Immunogen:	Recombinant protein corresponding to Mouse GK2
Cross-Reactivity:	Rat
Purification:	Affinity purification

Target Details

Target:	GK2
Alternative Name:	GK2 (GK2 Products)
Background:	GK2 is a 553 amino acid protein that belongs to the FGGY kinase family and is involved in the pathway of glycerol degradation. Localized to the outer membrane of the mitochondrion and expressed at high levels in testis, GK2 functions to catalyze the ATP-dependent conversion of glycerol to glycerol 3-phosphate. Via its catalytic activity, GK2 plays an essential role in the regulation of glycerol uptake and metabolism. The gene encoding GK2 maps to chromosome 4,

Target Details

	which encodes nearly 6 % of the human genome and has the largest gene deserts (regions of the genome with no protein encoding genes) of all of the human chromosomes.
Molecular Weight:	61 kDa
Gene ID:	14626
NCBI Accession:	NP_034424
UniProt:	Q9WU65

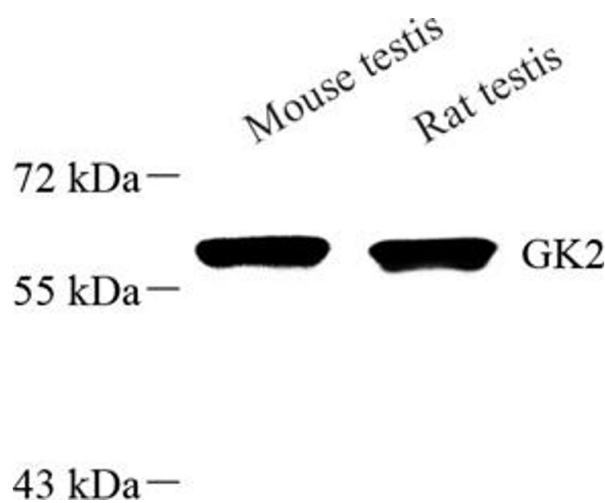
Application Details

Application Notes:	WB (M,R) 1:1000-1:2000, IHC/IF (M,R) 1:500-1:1000
Restrictions:	For Research Use only

Handling

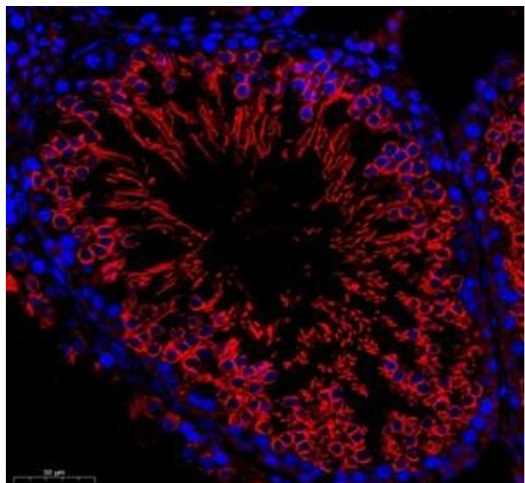
Format:	Liquid
Buffer:	PBS, pH 7.4, 0.02 % sodium azide
Preservative:	Sodium azide
Precaution of Use:	This product contains Sodium azide: a POISONOUS AND HAZARDOUS SUBSTANCE which should be handled by trained staff only.
Storage:	-20 °C

Images



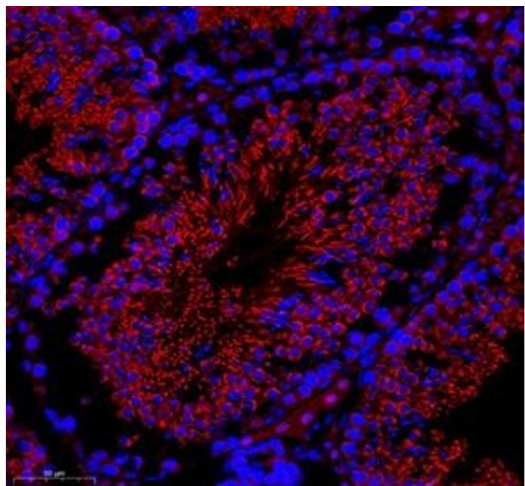
Western Blotting

Image 1. Western blot analysis of GK2 (ABIN7074096) at dilution of 1: 1000



Immunofluorescence (Paraffin-embedded Sections)

Image 2. Immunofluorescence of paraffin embedded mouse testis using GK2 (ABIN7074096) at dilution of 1: 500 (300x lens)



Immunofluorescence (Paraffin-embedded Sections)

Image 3. Immunofluorescence of paraffin embedded rat testis using GK2 (ABIN7074096) at dilution of 1: 500 (300x lens)