

Datasheet for ABIN7074111

anti-GP5 antibody**2** Images[Go to Product page](#)

Overview

Quantity:	100 µL
Target:	GP5
Reactivity:	Mouse, Rat
Host:	Rabbit
Clonality:	Polyclonal
Conjugate:	This GP5 antibody is un-conjugated
Application:	Immunohistochemistry (IHC), Immunofluorescence (IF)

Product Details

Immunogen:	Recombinant protein corresponding to Mouse CD42d
Cross-Reactivity:	Rat
Purification:	Affinity purification

Target Details

Target:	GP5
Alternative Name:	CD42d/GP5 (GP5 Products)
Background:	Natural killer (NK) cells in teleosts and their evolutionary homologue are a subpopulation of lymphocytes with properties that distinguish them from either B- or T-cells. NK cells are important effectors of innate immunity where they release cytokines, which in turn up-regulate other immunological functions. Monoclonal antibodies have been used to identify different surface antigens present on NK cells. These surface antigens have not only been used to

Target Details

identify NK cells, but also their functionally distinct subsets. The Cluster of Differentiation (CD) nomenclature was established to standardize the naming of NK cells.

UniProt: [O08742](#)

Application Details

Application Notes: IHC/IF (M,R) 1:700-1:1400

Restrictions: For Research Use only

Handling

Format: Liquid

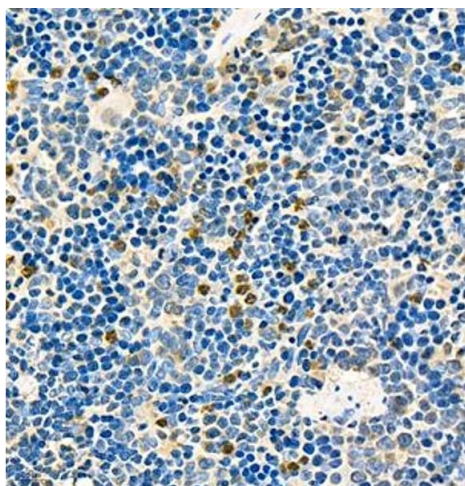
Buffer: PBS, pH 7.4, 0.02 % sodium azide

Preservative: Sodium azide

Precaution of Use: This product contains Sodium azide: a POISONOUS AND HAZARDOUS SUBSTANCE which should be handled by trained staff only.

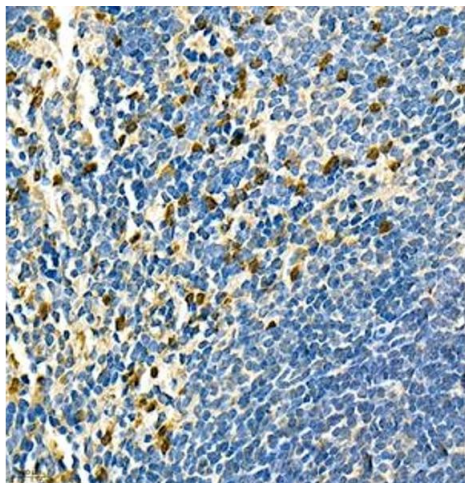
Storage: -20 °C

Images



Immunohistochemistry (Paraffin-embedded Sections)

Image 1. Immunohistochemistry of paraffin embedded rat spleen using CD42d (ABIN7074111) at dilution of 1:700 (400x lens)



Immunohistochemistry (Paraffin-embedded Sections)

Image 2. Immunohistochemistry of paraffin embedded mouse spleen using CD42d (ABIN7074111) at dilution of 1:700 (400x lens)