

Datasheet for ABIN7074122

**anti-GPAA1 antibody**[Go to Product page](#)**1** Image

## Overview

Quantity:	100 µL
Target:	GPAA1
Reactivity:	Rat
Host:	Rabbit
Clonality:	Polyclonal
Application:	Immunohistochemistry (IHC), Immunofluorescence (IF)

## Product Details

Immunogen:	Recombinant protein corresponding to Mouse GAA1
Cross-Reactivity:	Rat
Purification:	Affinity purification

## Target Details

Target:	GPAA1
Alternative Name:	GAA1 ( <a href="#">GPAA1 Products</a> )
Background:	GPAA1(Glycosylphosphatidylinositol anchor attachment 1 protein) is also named as GAA1. It is the most conspicuously hydrophobic of the known subunits of GPIT, and it may play a key role in substrate recognition. It is predicted to be a multispanning membrane protein of 67 kDa with seven transmembrane (TM) domains, a large luminal domain between the first two TM segments, and a cytoplasmically oriented N terminus bearing a potential ER retrieval signal in the form of a diarginine motif. It has 2 isoforms produced by alternative splicing and the full

## Target Details

length protein has 2 glycosylation sites. This antibody is specific to GPAA1.

Gene ID: 14731

UniProt: [Q9WTK3](#)

Pathways: [Inositol Metabolic Process](#), [Maintenance of Protein Location](#), [SARS-CoV-2 Protein Interactome](#)

## Application Details

Application Notes: IHC/IF (R) 1:2000-1:4000

Restrictions: For Research Use only

## Handling

Format: Liquid

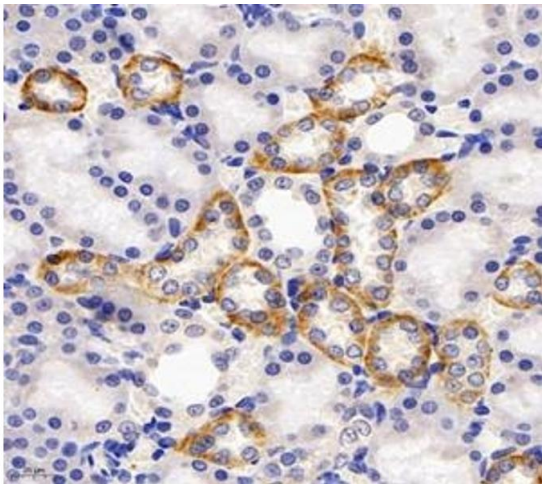
Buffer: PBS, pH 7.4, 0.02 % sodium azide

Preservative: Sodium azide

Precaution of Use: This product contains Sodium azide: a POISONOUS AND HAZARDOUS SUBSTANCE which should be handled by trained staff only.

Storage: -20 °C

## Images



### Immunohistochemistry (Paraffin-embedded Sections)

**Image 1.** Immunohistochemistry analysis of paraffin-embedded rat kidney using GAA1 (ABIN7074122) at dilution of 1: 4000