

Datasheet for ABIN7074131

**anti-GDF5 antibody**

3 Images

[Go to Product page](#)

## Overview

Quantity:	100 µL
Target:	GDF5
Reactivity:	Human, Mouse, Rat
Host:	Rabbit
Clonality:	Polyclonal
Application:	Western Blotting (WB), Immunohistochemistry (IHC), Immunofluorescence (IF)

## Product Details

Immunogen:	KLH conjugated Synthetic peptide corresponding to Mouse GDF 5
Cross-Reactivity:	Human, Rat
Purification:	Affinity purification

## Target Details

Target:	GDF5
Alternative Name:	GDF 5 ( <a href="#">GDF5 Products</a> )
Background:	Growth factor involved in bone and cartilage formation. During cartilage development regulates differentiation of chondrogenic tissue through two pathways. Firstly, positively regulates differentiation of chondrogenic tissue through its binding of high affinity with BMPR1B and of less affinity with BMPR1A, leading to induction of SMAD1-SMAD5-SMAD8 complex phosphorylation and then SMAD protein signaling transduction . Secondly, negatively regulates chondrogenic differentiation through its interaction with NOG . Required to prevent excessive

## Target Details

muscle loss upon denervation. This function requires SMAD4 and is mediated by phosphorylated SMAD1/5/8 .

Molecular Weight: 55 kDa

Gene ID: 14563

NCBI Accession: [NP\\_032135](#)

UniProt: [P43027](#)

## Application Details

Application Notes: WB (H,M) 1:500-1:1000, IHC/IF (H,R) 1:200-1:400

Restrictions: For Research Use only

## Handling

Format: Liquid

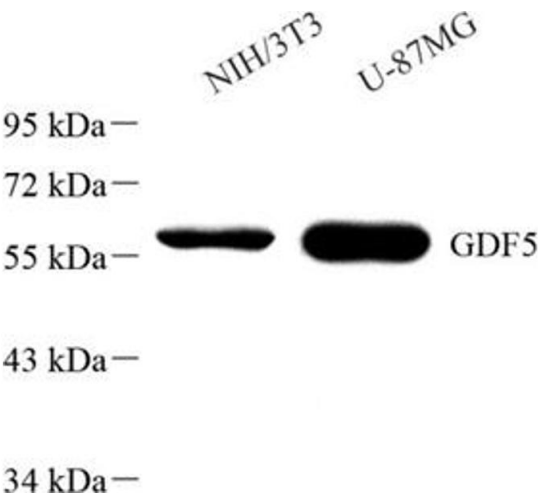
Buffer: PBS, pH 7.4, 0.02 % sodium azide

Preservative: Sodium azide

Precaution of Use: This product contains Sodium azide: a POISONOUS AND HAZARDOUS SUBSTANCE which should be handled by trained staff only.

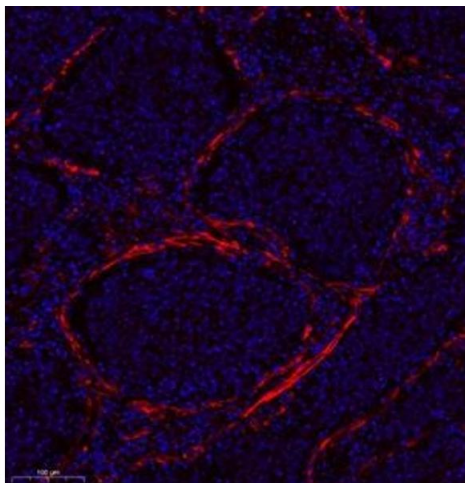
Storage: -20 °C

## Images



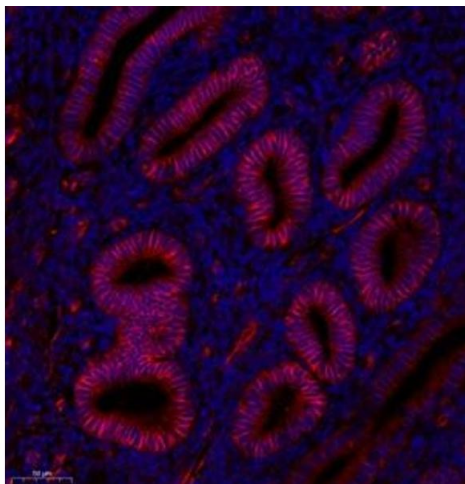
### Western Blotting

**Image 1.** Western blot analysis of GDF5 (ABIN7074131) at dilution of 1: 1000



#### Immunofluorescence (Paraffin-embedded Sections)

**Image 2.** Immunofluorescence analysis of paraffin embedded human colon cancer using GDF5 (ABIN7074131) at dilution of 1: 200



#### Immunofluorescence (Paraffin-embedded Sections)

**Image 3.** Immunofluorescence analysis of paraffin embedded human endometrial cancer using GDF5 (ABIN7074131) at dilution of 1: 200