

Datasheet for ABIN7074167

anti-HSPD1 antibody

13 Images

[Go to Product page](#)

Overview

Quantity:	100 µL
Target:	HSPD1
Reactivity:	Human, Mouse, Rat
Host:	Rabbit
Clonality:	Polyclonal
Application:	Western Blotting (WB), Immunohistochemistry (IHC), Immunofluorescence (IF), Immunoelectron Microscopy (IEM)

Product Details

Immunogen:	KLH conjugated Synthetic peptide corresponding to Mouse HSP60
Cross-Reactivity:	Human, Rat
Purification:	Affinity purification

Target Details

Target:	HSPD1
Alternative Name:	Hsp60 (HSPD1 Products)
Background:	Heat shock protein 60 (HSP60) is a mitochondrial chaperonin that is typically held responsible for the transportation and refolding of proteins from the cytoplasm into the mitochondrial matrix. In addition to its role as a heat shock protein, HSP60 functions as a chaperonin to assist in folding linear amino acid chains into their respective three-dimensional structure. Through the extensive study of groEL, HSP60's bacterial homolog, HSP60 has been deemed essential in

Target Details

the synthesis and transportation of essential mitochondrial proteins from the cell's cytoplasm into the mitochondrial matrix. Further studies have linked HSP60 to diabetes, stress response, cancer and certain types of immunological disorders.

Molecular Weight:	60 kDa
Gene ID:	15510
NCBI Accession:	NP_034607
UniProt:	P63038
Pathways:	Activation of Innate immune Response , Regulation of Leukocyte Mediated Immunity , Positive Regulation of Immune Effector Process , Production of Molecular Mediator of Immune Response , Positive Regulation of Endopeptidase Activity

Application Details

Application Notes:	WB (H,M,R) 1:3000-1:10000, IHC/IF ,IEM (H,M,R) 1:500-1:1000/1:500-1:1000/1:50
Restrictions:	For Research Use only

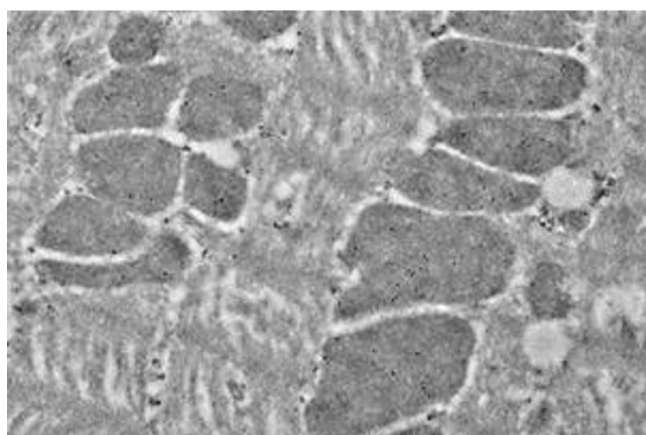
Handling

Format:	Liquid
Buffer:	PBS, pH 7.4, 0.02 % sodium azide
Preservative:	Sodium azide
Precaution of Use:	This product contains Sodium azide: a POISONOUS AND HAZARDOUS SUBSTANCE which should be handled by trained staff only.
Storage:	-20 °C



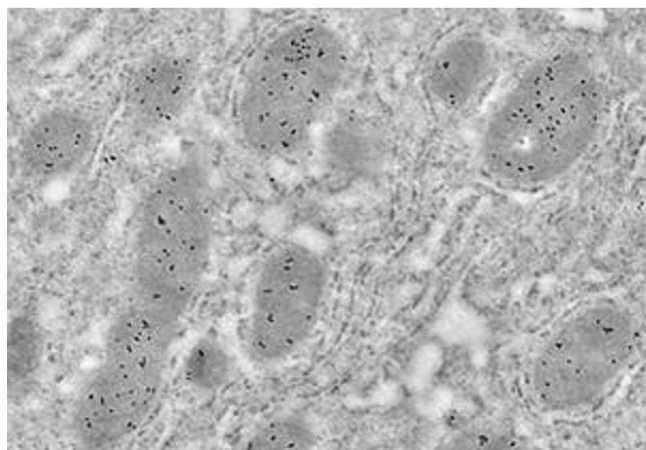
Western Blotting

Image 1. Western blot analysis of HSP60 (ABIN7074167) at dilution of 1: 3000



Immunoelectron Microscopy

Image 2. Immunoelectron microscopy analysis of LR white resin-embedded mouse heart using HSP60 (ABIN7074167) at dilution of 1: 50. A goat anti-rabbit antibody preabsorbed with 10nm colloidal gold was used as the secondary antibody, at dilution of 1: 50.



Immunoelectron Microscopy

Image 3. Immunoelectron microscopy analysis of LR white resin-embedded mouse liver using HSP60 (ABIN7074167) at dilution of 1: 50. A goat anti-rabbit antibody preabsorbed with 10nm colloidal gold was used as the secondary antibody, at dilution of 1: 50.

Please check the [product details page](#) for more images. Overall 13 images are available for ABIN7074167.