



Datasheet for ABIN7074214
anti-HKDC1 antibody



[Go to Product page](#)

1 Image

Overview

Quantity:	100 µL
Target:	HKDC1
Reactivity:	Rat, Mouse
Host:	Rabbit
Clonality:	Polyclonal
Conjugate:	This HKDC1 antibody is un-conjugated
Application:	Western Blotting (WB)

Product Details

Immunogen:	KLH conjugated Synthetic peptide corresponding to Mouse HKDC1
Cross-Reactivity:	Rat
Purification:	Affinity purification

Target Details

Target:	HKDC1
Alternative Name:	HKDC1 (HKDC1 Products)
Background:	Catalyzes the phosphorylation of hexose to hexose 6-phosphate, although at very low level compared to other hexokinases (By similarity). Has low glucose phosphorylating activity compared to other hexokinases . Involved in glucose homeostasis and hepatic lipid accumulation . Required to maintain whole-body glucose homeostasis during pregnancy, however additional evidences are required to confirm this role .

Target Details

Molecular Weight:	102 kDa
Gene ID:	216019
NCBI Accession:	NP_663394
UniProt:	Q91W97

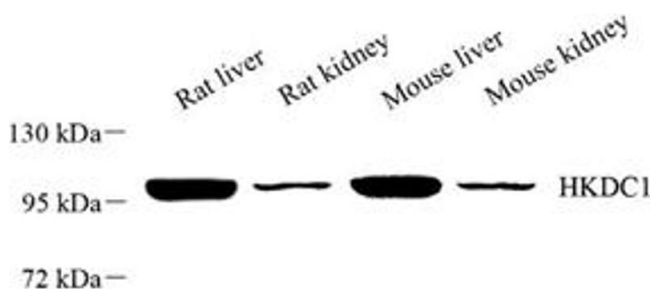
Application Details

Application Notes:	WB (M,R) 1:500-1:1000
Restrictions:	For Research Use only

Handling

Format:	Liquid
Buffer:	PBS, pH 7.4, 0.02 % sodium azide
Preservative:	Sodium azide
Precaution of Use:	This product contains Sodium azide: a POISONOUS AND HAZARDOUS SUBSTANCE which should be handled by trained staff only.
Storage:	-20 °C

Images



Western Blotting

Image 1. Western blot analysis of HKDC1 (ABIN7074214) at dilution of 1: 500