

Datasheet for ABIN7074255

anti-HIPK2 antibody**2** Images[Go to Product page](#)

Overview

Quantity:	100 µL
Target:	HIPK2
Reactivity:	Rat
Host:	Rabbit
Clonality:	Polyclonal
Conjugate:	This HIPK2 antibody is un-conjugated
Application:	Immunohistochemistry (IHC), Immunofluorescence (IF)

Product Details

Immunogen:	KLH conjugated Synthetic peptide corresponding to Mouse HIPK2
Cross-Reactivity:	Rat
Purification:	Affinity purification

Target Details

Target:	HIPK2
Alternative Name:	HIPK2 (HIPK2 Products)
Background:	Homeodomain-interacting protein kinase 2 is an enzyme that in humans is encoded by the HIPK2 gene. HIPK2 can be categorized as a Serine/Threonine Protein kinase, specifically one that interacts with homeodomain transcription factors. It belongs to a family of protein kinases known as the DYRK kinases. Within this family HIPK2 belongs to a group of homeodomain-interacting protein kinases (HIPKs), including HIPK1 and HIPK3. HIPK2 can be found in a wide

Target Details

variety of species and its functions in gene expression and apoptosis are regulated by several different mechanisms.

Gene ID: 15258

NCBI Accession: [NP_001129537](#)

UniProt: [Q9QZR5](#)

Pathways: [Cell Division Cycle](#)

Application Details

Application Notes: IHC/IF (R) 1:500-1:1000/1:250-1:500

Restrictions: For Research Use only

Handling

Format: Liquid

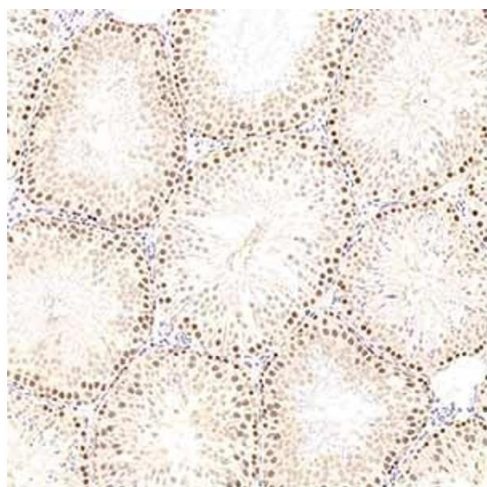
Buffer: PBS, pH 7.4, 0.02 % sodium azide

Preservative: Sodium azide

Precaution of Use: This product contains Sodium azide: a POISONOUS AND HAZARDOUS SUBSTANCE which should be handled by trained staff only.

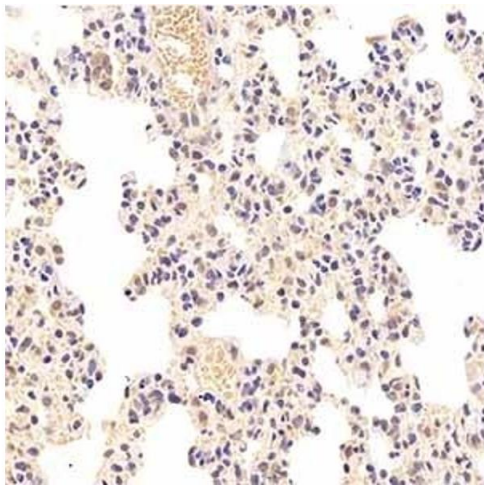
Storage: -20 °C

Images



Immunohistochemistry (Paraffin-embedded Sections)

Image 1. Immunohistochemistry analysis of paraffin-embedded rat testis using, HIPK2 (ABIN7074255) at dilution of 1:1000



Immunohistochemistry (Paraffin-embedded Sections)

Image 2. Immunohistochemistry analysis of paraffin-embedded rat lung using, HIPK2 (ABIN7074255) at dilution of 1: 1000