

Datasheet for ABIN707426
anti-MMP2 antibody (AA 401-500)

4 Images

10 Publications



[Go to Product page](#)

Overview

Quantity:	100 µL
Target:	MMP2
Binding Specificity:	AA 401-500
Reactivity:	Human, Rat, Mouse, Rabbit
Host:	Rabbit
Clonality:	Polyclonal
Conjugate:	This MMP2 antibody is un-conjugated
Application:	Western Blotting (WB), ELISA, Flow Cytometry (FACS), Immunohistochemistry (Paraffin-embedded Sections) (IHC (p)), Immunofluorescence (Cultured Cells) (IF (cc)), Immunofluorescence (Paraffin-embedded Sections) (IF (p)), Immunohistochemistry (Frozen Sections) (IHC (fro))

Product Details

Immunogen:	KLH conjugated synthetic peptide derived from human MMP-2
Isotype:	IgG
Cross-Reactivity:	Human, Mouse, Rabbit, Rat
Predicted Reactivity:	Cow, Sheep, Pig, Horse
Purification:	Purified by Protein A.

Target Details

Target:	MMP2
---------	------

Target Details

Alternative Name: [MMP-2 \(MMP2 Products\)](#)

Background: Synonyms: CLG4, MONA, CLG4A, MMP-2, TBE-1, MMP-II, 72 kDa type IV collagenase, 72 kDa gelatinase, Gelatinase A, Matrix metalloproteinase-2, MMP2

Background: Ubiquitous metalloproteinase that is involved in diverse functions such as remodeling of the vasculature, angiogenesis, tissue repair, tumor invasion, inflammation, and atherosclerotic plaque rupture. As well as degrading extracellular matrix proteins, can also act on several nonmatrix proteins such as big endothelial 1 and beta-type CGRP promoting vasoconstriction. Also cleaves KISS at a Gly-I-Leu bond. Appears to have a role in myocardial cell death pathways. Contributes to myocardial oxidative stress by regulating the activity of GSK3beta. Cleaves GSK3beta in vitro. Involved in the formation of the fibrovascular tissues in association with MMP14. PEX, the C-terminal non-catalytic fragment of MMP2, possesses anti-angiogenic and anti-tumor properties and inhibits cell migration and cell adhesion to FGF2 and vitronectin. Ligand for integrin α 5 β 3 on the surface of blood vessels. Isoform 2: Mediates the proteolysis of CHUK/IKKA and initiates a primary innate immune response by inducing mitochondrial-nuclear stress signaling with activation of the pro-inflammatory NF-kappaB, NFAT and IRF transcriptional pathways.

Gene ID: 4313

UniProt: [P08253](#)

Pathways: [Activation of Innate immune Response](#)

Application Details

Application Notes: WB 1:300-5000
ELISA 1:500-1000
FCM 1:20-100
IHC-P 1:200-400
IHC-F 1:100-500
IF(IHC-P) 1:50-200
IF(IHC-F) 1:50-200
IF(ICC) 1:50-200

Restrictions: For Research Use only

Handling

Format: Liquid

Handling

Concentration:	1 µg/µL
Buffer:	0.01M TBS(pH 7.4) with 1 % BSA, 0.02 % Proclin300 and 50 % Glycerol.
Preservative:	ProClin
Precaution of Use:	This product contains ProClin: a POISONOUS AND HAZARDOUS SUBSTANCE, which should be handled by trained staff only.
Storage:	4 °C,-20 °C
Storage Comment:	Shipped at 4°C. Store at -20°C for one year. Avoid repeated freeze/thaw cycles.
Expiry Date:	12 months

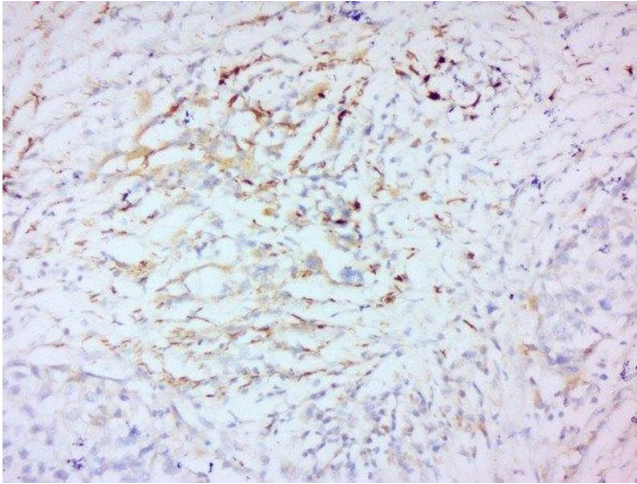
Publications

Product cited in: Bi, Zhang, Du, Zhang, Deng, Liu, Zhang: "Peripheral serotonin regulates postoperative intra-abdominal adhesion formation in mice." in: **Scientific reports**, Vol. 7, Issue 1, pp. 10001, (2019) ([PubMed](#)).

Gasparski, Ozarkar, Beningo: "Transient mechanical strain promotes the maturation of invadopodia and enhances cancer cell invasion in vitro." in: **Journal of cell science**, Vol. 130, Issue 11, pp. 1965-1978, (2018) ([PubMed](#)).

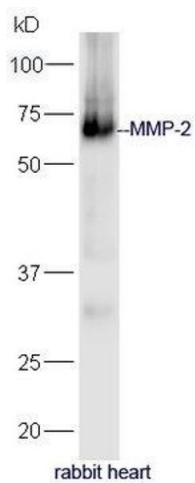
Wang, Nikhil, Viccaro, Chang, White, Shah: "Phosphorylation-dependent regulation of ALDH1A1 by Aurora kinase A: insights on their synergistic relationship in pancreatic cancer." in: **BMC biology**, Vol. 15, Issue 1, pp. 10, (2017) ([PubMed](#)).

There are more publications referencing this product on: [Product page](#)



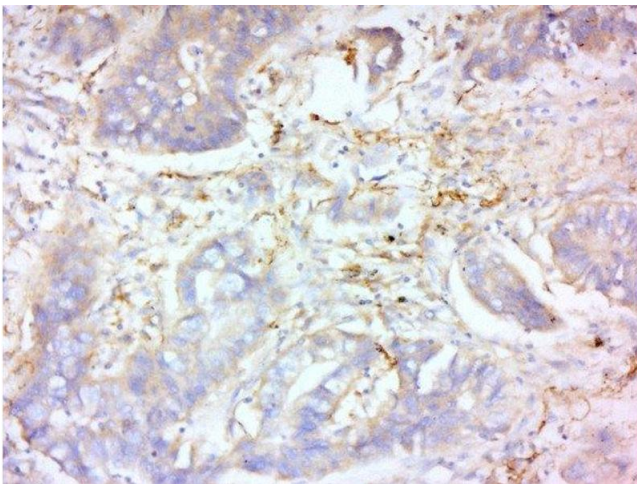
Immunohistochemistry (Paraffin-embedded Sections)

Image 1. Formalin-fixed and paraffin embedded human laryngeal carcinoma labeled with Anti-MMP-2 Polyclonal Antibody, Unconjugated at 1:200 followed by conjugation to the secondary antibody and DAB staining.



Western Blotting

Image 2. Rabbit heart lysates probed with Anti-MMP-2 Polyclonal Antibody, Unconjugated (ABIN707426) at 1:300 in 4°C. Followed by conjugation to secondary antibody at 1:5000 90min in 37°C



Immunohistochemistry (Paraffin-embedded Sections)

Image 3. Formalin-fixed and paraffin embedded human lung carcinoma labeled with Anti-MMP-2 Polyclonal Antibody, Unconjugated at 1:200 followed by conjugation to the secondary antibody and DAB staining.

Please check the [product details page](#) for more images. Overall 4 images are available for ABIN707426.