

Datasheet for ABIN7074293
anti-IP3 Receptor antibody[Go to Product page](#)

4 Images

Overview

Quantity:	100 µL
Target:	IP3 Receptor (ITP-R83A)
Reactivity:	Human, Rat, Mouse
Host:	Rabbit
Clonality:	Polyclonal
Application:	Western Blotting (WB), Immunohistochemistry (IHC), Immunofluorescence (IF)

Product Details

Immunogen:	KLH conjugated Synthetic peptide corresponding to Human IP3 receptor
Cross-Reactivity:	Mouse, Rat
Purification:	Affinity purification

Target Details

Target:	IP3 Receptor (ITP-R83A)
Alternative Name:	IP3 receptor (ITP-R83A Products)
Background:	Inositol 1,4,5-trisphosphate receptor type 1 is a protein that in humans is encoded by the ITPR1 gene. Upon stimulation by inositol 1,4,5-trisphosphate, this receptor mediates calcium release from the endoplasmic reticulum. Mutations in this gene cause spinocerebellar ataxia type 15, a disease associated with an heterogeneous group of cerebellar disorders. Multiple transcript variants have been identified for this gene.
Molecular Weight:	313 kDa

Target Details

Gene ID: 3708

NCBI Accession: [NP_001093422](#)

UniProt: [Q14643](#)

Pathways: [Fc-epsilon Receptor Signaling Pathway](#), [Thyroid Hormone Synthesis](#), [Myometrial Relaxation and Contraction](#), [G-protein mediated Events](#), [Interaction of EGFR with phospholipase C-gamma](#)

Application Details

Application Notes: WB (H) 1: 500-1: 1000, IHC/IF (M,R) 1:500-1:1500/1:750-1:1500

Restrictions: For Research Use only

Handling

Format: Liquid

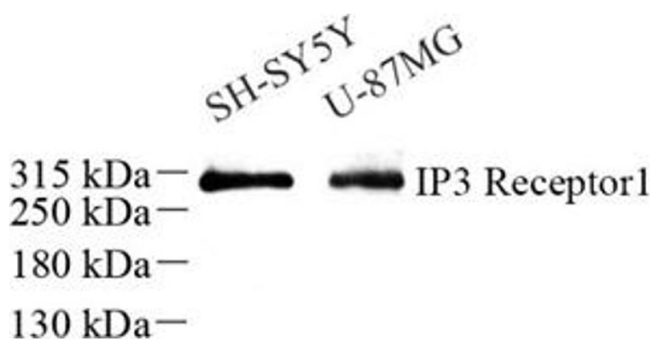
Buffer: PBS, pH 7.4, 0.02 % sodium azide

Preservative: Sodium azide

Precaution of Use: This product contains Sodium azide: a POISONOUS AND HAZARDOUS SUBSTANCE which should be handled by trained staff only.

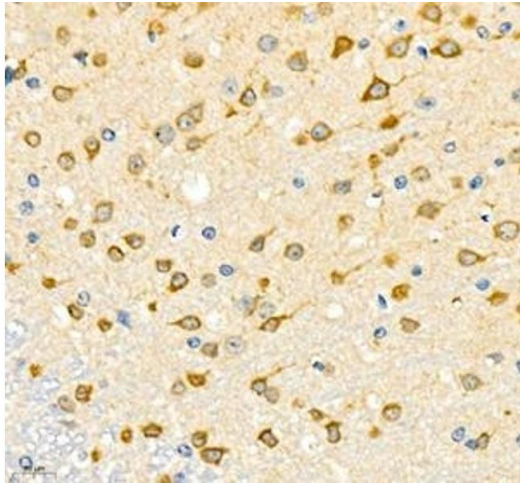
Storage: -20 °C

Images



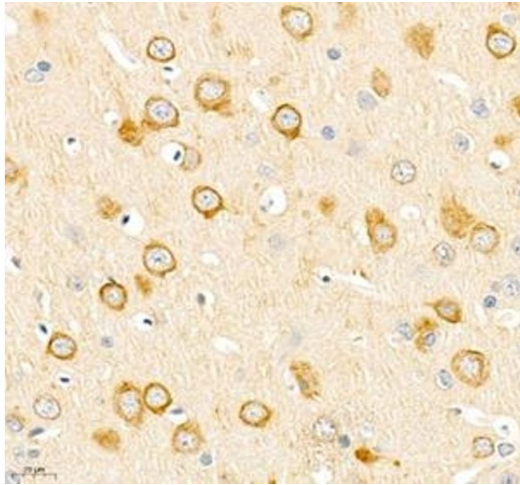
Western Blotting

Image 1. Western blot analysis of IP3R1 (ABIN7074293) at dilution of 1: 500



Immunohistochemistry (Paraffin-embedded Sections)

Image 2. Immunohistochemistry of paraffin embedded mouse brain using IP3R1 (ABIN7074293) at dilution of 1: 600 (400x lens)



Immunohistochemistry (Paraffin-embedded Sections)

Image 3. Immunohistochemistry of paraffin embedded rat brain using IP3R1 (ABIN7074293) at dilution of 1: 2400 (400x lens)

Please check the [product details page](#) for more images. Overall 4 images are available for ABIN7074293.