

Datasheet for ABIN7074298

anti-ISR-alpha antibody

4 Images

[Go to Product page](#)

Overview

Quantity:	100 µL
Target:	ISR-alpha
Reactivity:	Human, Rat, Mouse
Host:	Rabbit
Clonality:	Polyclonal
Conjugate:	This ISR-alpha antibody is un-conjugated
Application:	Immunohistochemistry (IHC), Immunofluorescence (IF)

Product Details

Immunogen:	KLH conjugated Synthetic peptide corresponding to Mouse Insulin Receptor alpha
Cross-Reactivity:	Human, Rat
Purification:	Affinity purification

Target Details

Target:	ISR-alpha
Alternative Name:	Insulin Receptor alpha (ISR-alpha Products)
Background:	This gene encodes a member of the receptor tyrosine kinase family of proteins. The encoded preproprotein is proteolytically processed to generate alpha and beta subunits that form a heterotetrameric receptor. Binding of insulin or other ligands to this receptor activates the insulin signaling pathway, which regulates glucose uptake and release, as well as the synthesis and storage of carbohydrates, lipids and protein. Mutations in this gene underlie the inherited

Target Details

severe insulin resistance syndromes including type A insulin resistance syndrome, Donohue syndrome and Rabson-Mendenhall syndrome. Alternative splicing results in multiple transcript variants.

Gene ID: 16337

UniProt: [P15208](#)

Application Details

Application Notes: IHC: 1: 3000-1: 6000
Human, Mouse, Rat: Human, Mouse, Rat
Positive Tissue: endometrial cancer, esophagus cancer, uterus, small intestine

Restrictions: For Research Use only

Handling

Format: Liquid

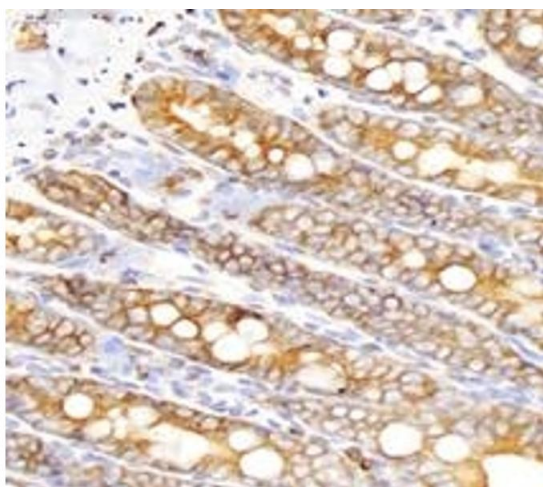
Buffer: PBS, pH 7.4, 0.02 % sodium azide

Preservative: Sodium azide

Precaution of Use: This product contains Sodium azide: a POISONOUS AND HAZARDOUS SUBSTANCE which should be handled by trained staff only.

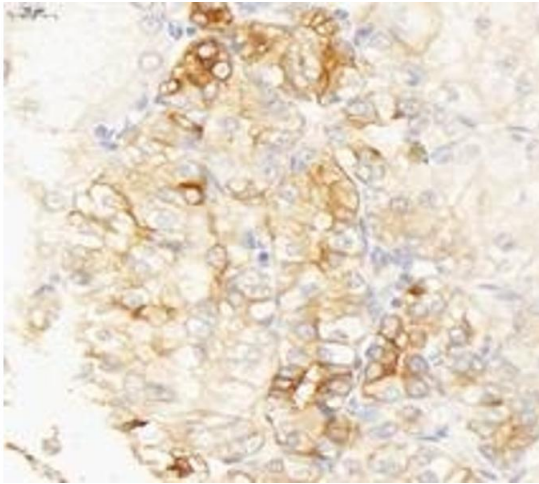
Storage: -20 °C

Images



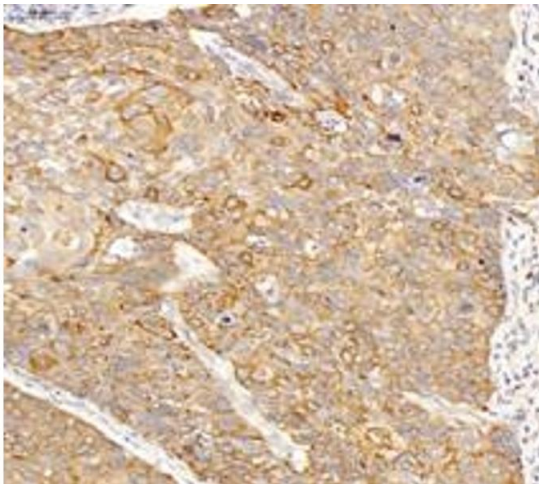
Immunohistochemistry (Paraffin-embedded Sections)

Image 1. Immunohistochemistry analysis of paraffin-embedded rat small intestine using INSR (ABIN7074298) at dilution of 1: 6000



Immunohistochemistry (Paraffin-embedded Sections)

Image 2. Immunohistochemistry analysis of paraffin-embedded human endometrial cancer using INSR (ABIN7074298) at dilution of 1: 6000



Immunohistochemistry (Paraffin-embedded Sections)

Image 3. Immunohistochemistry analysis of paraffin-embedded human esophagus cancer using INSR (ABIN7074298) at dilution of 1: 6000

Please check the [product details page](#) for more images. Overall 4 images are available for ABIN7074298.