

Datasheet for ABIN7074366  
**anti-IL27 antibody**



[Go to Product page](#)

1 Image

## Overview

Quantity:	100 µL
Target:	IL27
Reactivity:	Human, Mouse, Rat
Host:	Rabbit
Clonality:	Polyclonal
Conjugate:	This IL27 antibody is un-conjugated
Application:	Western Blotting (WB)

## Product Details

Immunogen:	KLH conjugated Synthetic peptide corresponding to Mouse IL27A
Cross-Reactivity:	Human, Rat
Purification:	Affinity purification

## Target Details

Target:	IL27
Alternative Name:	IL-27-A ( <a href="#">IL27 Products</a> )
Background:	<p>Interleukin 27 (IL-27) is a member of the IL-12 cytokine family. It is a heterodimeric cytokine that is composed of two distinct genes, Epstein-Barr virus-induced gene 3 (EBI3) and IL-27p28. IL-27 is expressed by antigen presenting cells and interacts with a specific cell-surface receptor complex known as IL-27 receptor (IL-27R). This receptor consists of two proteins, IL-27<math>\alpha</math> and gp130. IL-27 induces differentiation of the diverse populations of T cells in the immune system</p>

Target Details

	and also upregulates IL-10.
Molecular Weight:	28 kDa
Gene ID:	246779
NCBI Accession:	<a href="#">NP_663611</a>
UniProt:	<a href="#">Q8K3I6</a>

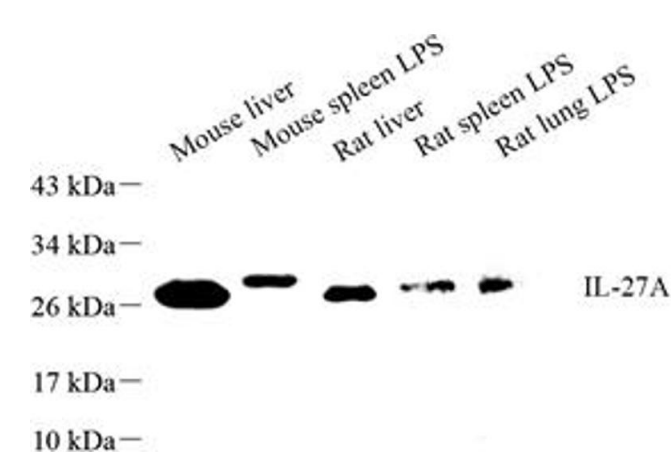
Application Details

Application Notes:	WB (H,M,R) 1: 500-1: 1000
Restrictions:	For Research Use only

Handling

Format:	Liquid
Buffer:	PBS, pH 7.4, 0.02 % sodium azide
Preservative:	Sodium azide
Precaution of Use:	This product contains Sodium azide: a POISONOUS AND HAZARDOUS SUBSTANCE which should be handled by trained staff only.
Storage:	-20 °C

Images



**Western Blotting**

**Image 1.** Western blot analysis of IL-27A (ABIN7074366) at dilution of 1: 500