

Datasheet for ABIN7074393
anti-Junctophilin 2 antibody

3 Images

[Go to Product page](#)

Overview

Quantity:	100 µL
Target:	Junctophilin 2 (JPH2)
Reactivity:	Mouse, Rat
Host:	Rabbit
Clonality:	Polyclonal
Conjugate:	This Junctophilin 2 antibody is un-conjugated
Application:	Western Blotting (WB), Immunohistochemistry (IHC), Immunofluorescence (IF)

Product Details

Immunogen:	Recombinant protein corresponding to Mouse JP-2
Cross-Reactivity:	Rat
Purification:	Affinity purification

Target Details

Target:	Junctophilin 2 (JPH2)
Alternative Name:	JP-2 (JPH2 Products)
Background:	Junctional complexes between the plasma membrane and endoplasmic/sarcoplasmic reticulum are a common feature of all excitable cell types and mediate cross talk between cell surface and intracellular ion channels. The protein encoded by this gene is a component of junctional complexes and is composed of a C-terminal hydrophobic segment spanning the endoplasmic/sarcoplasmic reticulum membrane and a remaining cytoplasmic domain that

Target Details

shows specific affinity for the plasma membrane. This gene is a member of the junctophilin gene family. Alternative splicing has been observed at this locus and two variants encoding distinct isoforms are described.

Molecular Weight: 80 kDa

Gene ID: 59091

NCBI Accession: [NP_001192005](#)

UniProt: [Q9ET78](#)

Application Details

Application Notes: WB (M) 1:1000-1:2000, IHC/IF (M,R) 1:300-1:1200

Restrictions: For Research Use only

Handling

Format: Liquid

Buffer: PBS, pH 7.4, 0.02 % sodium azide

Preservative: Sodium azide

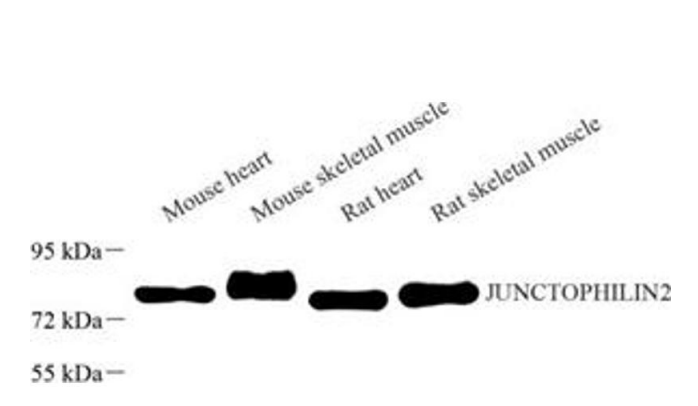
Precaution of Use: This product contains Sodium azide: a POISONOUS AND HAZARDOUS SUBSTANCE which should be handled by trained staff only.

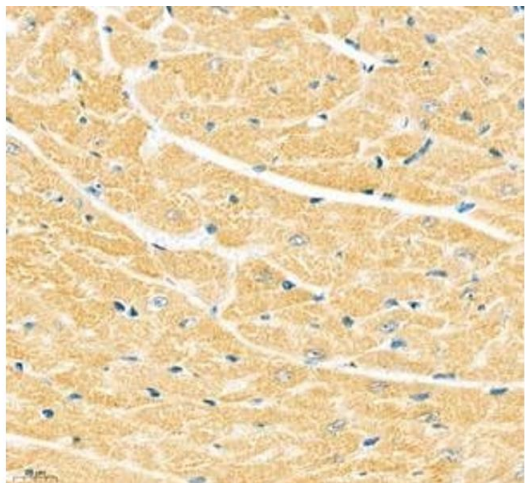
Storage: -20 °C

Images

Western Blotting

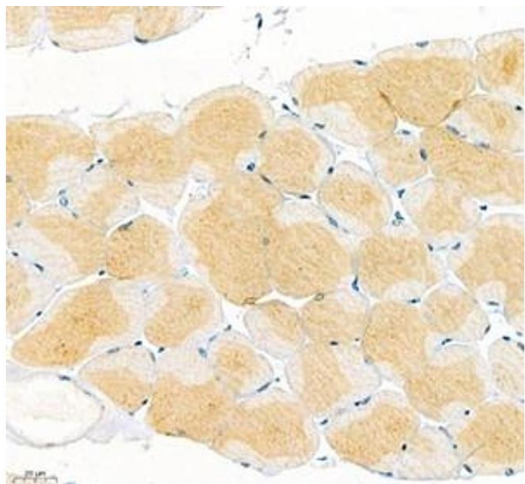
Image 1. Western blot analysis of JUNCTOPHILIN2 (ABIN7074393) at dilution of 1: 1000





Immunohistochemistry (Paraffin-embedded Sections)

Image 2. Immunohistochemistry of paraffin embedded mouse heart using Junctophilin2 (ABIN7074393) at dilution of 1: 600 (400x lens)



Immunohistochemistry (Paraffin-embedded Sections)

Image 3. Immunohistochemistry of paraffin embedded mouse skeletal muscle using Junctophilin2 (ABIN7074393) at dilution of 1: 600 (400x lens)