

Datasheet for ABIN7074396
anti-Kallikrein 7 antibody[Go to Product page](#)

2 Images

Overview

Quantity:	100 µL
Target:	Kallikrein 7 (KLK7)
Reactivity:	Rat, Mouse
Host:	Rabbit
Clonality:	Polyclonal
Conjugate:	This Kallikrein 7 antibody is un-conjugated
Application:	Immunohistochemistry (IHC), Immunofluorescence (IF)

Product Details

Immunogen:	KLH conjugated Synthetic peptide corresponding to Mouse Kallikrein 7/KLK7
Cross-Reactivity:	Rat
Purification:	Affinity purification

Target Details

Target:	Kallikrein 7 (KLK7)
Alternative Name:	Kallikrein 7/KLK7 (KLK7 Products)
Background:	Kallikreins are a subgroup of serine proteases having diverse physiological functions. Growing evidence suggests that many kallikreins are implicated in carcinogenesis and some have potential as novel cancer and other disease biomarkers. This gene is one of the fifteen kallikrein subfamily members located in a cluster on chromosome 19. Its encoded enzyme is thought to be involved in the proteolysis of intercellular cohesive structures preceding desquamation,

Target Details

which is the shedding of the outermost layer of the epidermis. Alternative splicing of this gene results in two transcript variants encoding the same protein.

Gene ID:	23993
NCBI Accession:	NP_036002
UniProt:	Q91VE3
Pathways:	Complement System

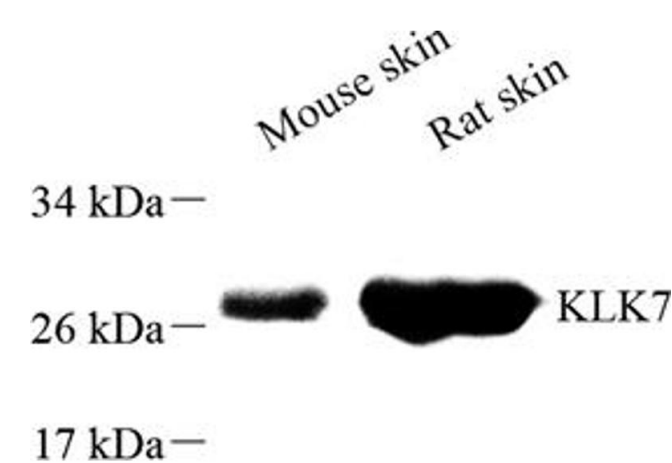
Application Details

Application Notes:	IHC/IF (M,R) 1:800-1:1600
Restrictions:	For Research Use only

Handling

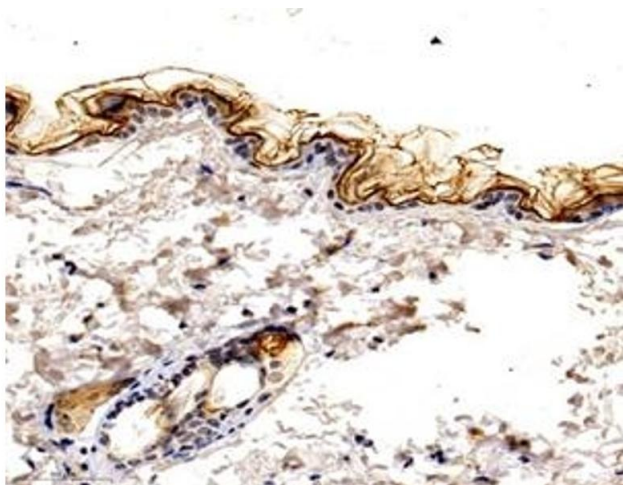
Format:	Liquid
Buffer:	PBS, pH 7.4, 0.02 % sodium azide
Preservative:	Sodium azide
Precaution of Use:	This product contains Sodium azide: a POISONOUS AND HAZARDOUS SUBSTANCE which should be handled by trained staff only.
Storage:	-20 °C

Images



Western Blotting

Image 1. Western blot analysis of KLK7 (ABIN7074396) at dilution of 1: 1000



Immunohistochemistry (Paraffin-embedded Sections)

Image 2. Immunohistochemistry analysis of paraffin-embedded mouse skin using KLK7 (ABIN7074396) at dilution of 1: 1600