



Datasheet for ABIN7074401 anti-KDEL3 antibody



[Go to Product page](#)

1 Image

Overview

Quantity:	100 µL
Target:	KDEL3 (kDEL3)
Reactivity:	Human, Mouse, Rat
Host:	Rabbit
Clonality:	Polyclonal
Conjugate:	This KDEL3 antibody is un-conjugated
Application:	Western Blotting (WB)

Product Details

Immunogen:	KLH conjugated Synthetic peptide corresponding to Mouse KDEL3
Cross-Reactivity:	Human, Rat
Purification:	Affinity purification

Target Details

Target:	KDEL3 (kDEL3)
Alternative Name:	KDEL3 (kDEL3 Products)
Background:	This gene encodes a member of the KDEL endoplasmic reticulum protein retention receptor family. Retention of resident soluble proteins in the lumen of the endoplasmic reticulum (ER) is achieved in both yeast and animal cells by their continual retrieval from the cis-Golgi, or a pre-Golgi compartment. Sorting of these proteins is dependent on a C-terminal tetrapeptide signal, usually lys-asp-glu-leu (KDEL) in animal cells, and his-asp-glu-leu (HDEL) in <i>S. cerevisiae</i> . This

Target Details

process is mediated by a receptor that recognizes, and binds the tetrapeptide-containing protein, and returns it to the ER. KDELR3 was the third member of the family to be identified. Alternate splicing results in multiple transcript variants.

Molecular Weight: 28 kDa

Gene ID: 105785

NCBI Accession: [NP_598851](#)

UniProt: [Q8R1L4](#)

Pathways: [ER-Nucleus Signaling, Maintenance of Protein Location](#)

Application Details

Application Notes: WB (H,M,R) 1:2000-1:4000

Restrictions: For Research Use only

Handling

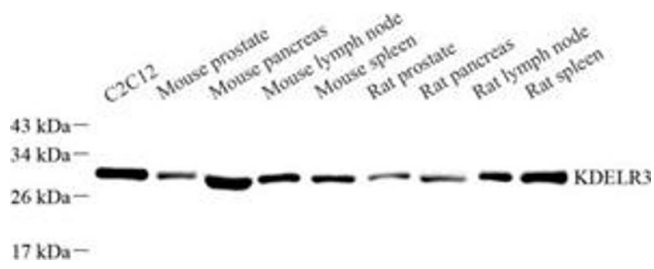
Format: Liquid

Buffer: PBS, pH 7.4, 0.02 % sodium azide

Preservative: Sodium azide

Precaution of Use: This product contains Sodium azide: a POISONOUS AND HAZARDOUS SUBSTANCE which should be handled by trained staff only.

Storage: -20 °C



Western Blotting

Image 1. Western blot analysis of KDELReceptor3 (ABIN7074401) at dilution of 1:2000