



[Go to Product page](#)

Datasheet for ABIN7074403

## anti-KLHL9 antibody

### 1 Image

#### Overview

Quantity:	100 µL
Target:	KLHL9
Reactivity:	Mouse
Host:	Rabbit
Clonality:	Polyclonal
Conjugate:	This KLHL9 antibody is un-conjugated
Application:	Immunohistochemistry (IHC), Immunofluorescence (IF)

#### Product Details

Immunogen:	Recombinant protein corresponding to Mouse KLHL9
Purification:	Affinity purification

#### Target Details

Target:	KLHL9
Alternative Name:	KLHL9 ( <a href="#">KLHL9 Products</a> )
Background:	<p>This gene encodes a protein that belongs to the kelch repeat-containing family, and contains an N-terminal BTB/POZ domain, a BACK domain and six C-terminal kelch repeats. The encoded protein is a component of a complex with cullin 3-based E3 ligase, which plays a role in mitosis. This protein complex is a cell cycle regulator, and functions in the organization and integrity of the spindle midzone in anaphase and the completion of cytokinesis. The complex is required for the removal of the chromosomal passenger protein aurora B from mitotic chromosomes.</p>

## Target Details

Gene ID: 242521

UniProt: [Q6ZPT1](#)

## Application Details

Application Notes: IHC/IF (M) 1:1000-1:2000

Restrictions: For Research Use only

## Handling

Format: Liquid

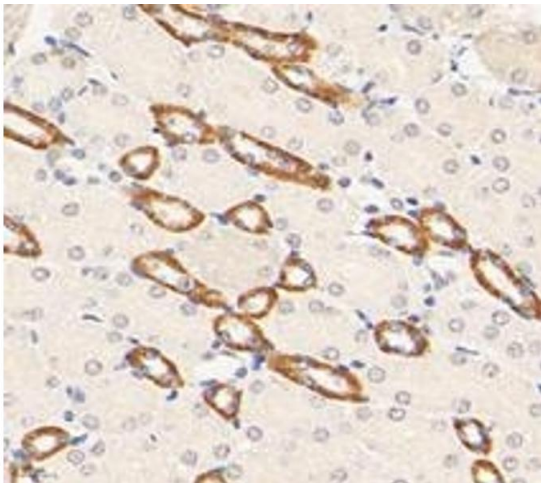
Buffer: PBS, pH 7.4, 0.02 % sodium azide

Preservative: Sodium azide

Precaution of Use: This product contains Sodium azide: a POISONOUS AND HAZARDOUS SUBSTANCE which should be handled by trained staff only.

Storage: -20 °C

## Images



### Immunohistochemistry (Paraffin-embedded Sections)

**Image 1.** Immunohistochemistry analysis of paraffin-embedded mouse kidney using KLHL9 (ABIN7074403) at dilution of 1: 2000