

Datasheet for ABIN707441
anti-TIMP1 antibody (AA 131-207)

2 Images

[Go to Product page](#)

Overview

Quantity:	100 µL
Target:	TIMP1
Binding Specificity:	AA 131-207
Reactivity:	Human, Rat, Mouse
Host:	Rabbit
Clonality:	Polyclonal
Conjugate:	This TIMP1 antibody is un-conjugated
Application:	Western Blotting (WB), ELISA, Immunohistochemistry (Paraffin-embedded Sections) (IHC (p)), Immunofluorescence (Paraffin-embedded Sections) (IF (p)), Immunofluorescence (Cultured Cells) (IF (cc)), Immunohistochemistry (Frozen Sections) (IHC (fro))

Product Details

Immunogen:	KLH conjugated synthetic peptide derived from human TIMP-1
Isotype:	IgG
Cross-Reactivity:	Human, Mouse, Rat
Predicted Reactivity:	Dog,Cow,Sheep,Pig,Rabbit
Purification:	Purified by Protein A.

Target Details

Target:	TIMP1
---------	-------

Target Details

Alternative Name: TIMP-1 ([TIMP1 Products](#))

Background: Synonyms: Clgi, Collagenase inhibitor, EPA, EPO, Erythroid Potentiating Activity, Fibroblast collagenase inhibitor, FLJ90373, HC, Human Collagenase Inhibitor, Metalloproteinase inhibitor 1, Metalloproteinase inhibitor 1 precursor, OTTHUMP00000023214, TIMP 1, TIMP, TIMP metalloproteinase inhibitor 1, TIMP1 protein, Tissue Inhibitor of Metalloproteinase 1, Tissue inhibitor of metalloproteinases, Tissue inhibitor of metalloproteinase 1 erythroid potentiating activity collagenase inhibitor.

Background: This gene belongs to the TIMP gene family. The proteins encoded by this gene family are natural inhibitors of the matrix metalloproteinases (MMPs), a group of peptidases involved in degradation of the extracellular matrix. In addition to its inhibitory role against most of the known MMPs, the encoded protein is able to promote cell proliferation in a wide range of cell types, and may also have an anti-apoptotic function. Transcription of this gene is highly inducible in response to many cytokines and hormones. In addition, the expression from some but not all inactive X chromosomes suggests that this gene inactivation is polymorphic in human females. This gene is located within intron 6 of the synapsin I gene and is transcribed in the opposite direction. [provided by RefSeq].

Molecular Weight: 23-28kDa

Gene ID: 7076

Application Details

Application Notes: WB 1:300-5000
ELISA 1:500-1000
IHC-P 1:200-400
IHC-F 1:100-500
IF(IHC-P) 1:50-200
IF(IHC-F) 1:50-200
IF(ICC) 1:50-200

Restrictions: For Research Use only

Handling

Format: Liquid

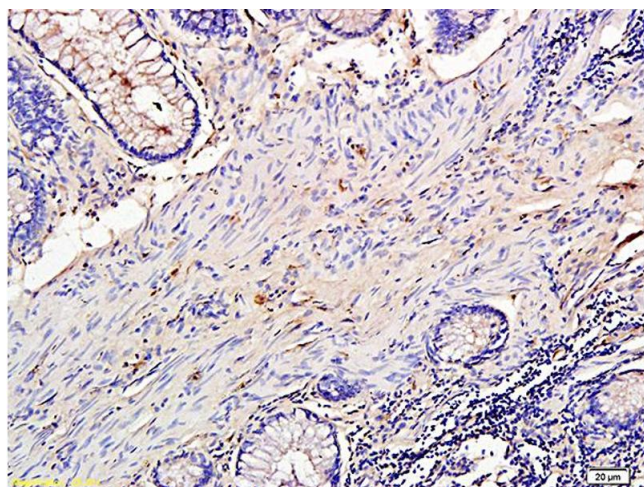
Concentration: 1 µg/µL

Buffer: 0.01M TBS(pH 7.4) with 1 % BSA, 0.02 % Proclin300 and 50 % Glycerol.

Handling

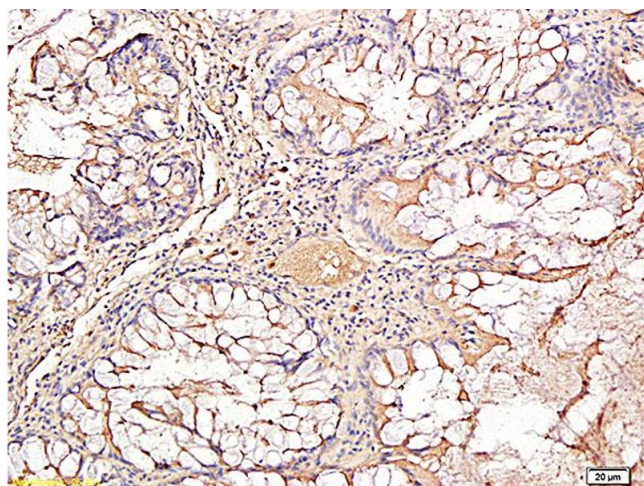
Preservative:	ProClin
Precaution of Use:	This product contains ProClin: a POISONOUS AND HAZARDOUS SUBSTANCE, which should be handled by trained staff only.
Storage:	4 °C,-20 °C
Storage Comment:	Shipped at 4°C. Store at -20°C for one year. Avoid repeated freeze/thaw cycles.
Expiry Date:	12 months

Images



Immunohistochemistry

Image 1. L1 rat lung lysates L2 human colon carcinoma lysates probed with Anti TIMP-1 Polyclonal Antibody, Unconjugated at 1:200 overnight at 4 °C. Followed by conjugation to secondary antibody at 1:3000 for 90 min at 37 °C. Predicted band 28kD. Observed band size:28kD, 60kD.



Immunohistochemistry

Image 2. Formalin-fixed and paraffin embedded human rectal carcinoma labeled with Rabbit Anti TIMP-1 Polyclonal Antibody, Unconjugated (ABIN707441) at 1:200 followed by conjugation to the secondary antibody and DAB staining