



[Go to Product page](#)

Datasheet for ABIN7074423
anti-Keratin 6 antibody

8 Images

Overview

Quantity:	100 µL
Target:	Keratin 6 (KRT6)
Reactivity:	Human, Mouse, Rat
Host:	Rabbit
Clonality:	Polyclonal
Conjugate:	This Keratin 6 antibody is un-conjugated
Application:	Immunofluorescence (IF), Immunohistochemistry (IHC), Western Blotting (WB)

Product Details

Immunogen:	Recombinant protein corresponding to Mouse Cytokeratin 6a
Cross-Reactivity:	Human, Rat
Purification:	Affinity purification

Target Details

Target:	Keratin 6 (KRT6)
Alternative Name:	Cytokeratin 6 (KRT6 Products)
Background:	Cytokeratin-6A, CK-6A, Keratin-6-alpha, mK6-alpha, Keratin-6A, K6A, Krt6a, Ker2, Krt2-6, Krt2-6a, Krt6
Molecular Weight:	59 kDa
Gene ID:	16687

Target Details

NCBI Accession: [NP_032502](#)

UniProt: [P50446](#)

Application Details

Application Notes: WB (H,M) 1: 500-1: 1000, IHC/IF (H,M,R) 1:1000-1:2000/1:1000-1:3000

Restrictions: For Research Use only

Handling

Format: Liquid

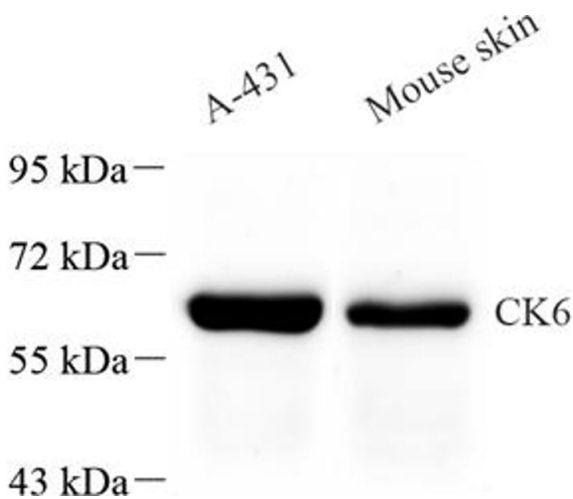
Buffer: PBS, pH 7.4, 0.02 % sodium azide

Preservative: Sodium azide

Precaution of Use: This product contains Sodium azide: a POISONOUS AND HAZARDOUS SUBSTANCE which should be handled by trained staff only.

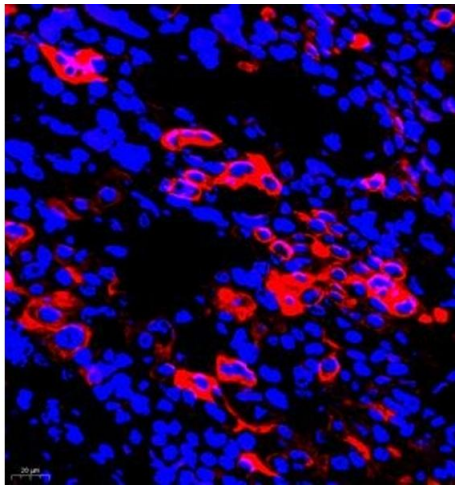
Storage: -20 °C

Images



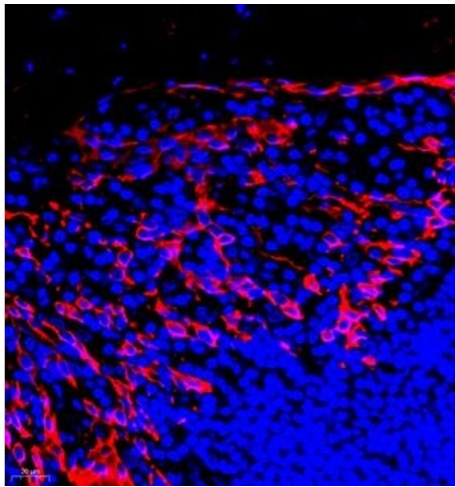
Western Blotting

Image 1. Western blot analysis of CK6 (ABIN7074423) at dilution of 1: 1000



Immunofluorescence (Paraffin-embedded Sections)

Image 2. Immunofluorescent analysis of paraffin embedded human ovarian cancer using CK6 (ABIN7074423) at dilution of 1: 2000



Immunofluorescence (Paraffin-embedded Sections)

Image 3. Immunofluorescent analysis of paraffin embedded human tonsil using CK6 (ABIN7074423) at dilution of 1: 2000

Please check the [product details page](#) for more images. Overall 8 images are available for ABIN7074423.