

Datasheet for ABIN7074435

anti-KSR1 antibody[Go to Product page](#)**1** Image

Overview

Quantity:	100 µL
Target:	KSR1
Reactivity:	Mouse, Rat
Host:	Rabbit
Clonality:	Polyclonal
Conjugate:	This KSR1 antibody is un-conjugated
Application:	Western Blotting (WB)

Product Details

Immunogen:	Recombinant protein corresponding to Mouse KSR1
Cross-Reactivity:	Rat
Purification:	Affinity purification

Target Details

Target:	KSR1
Alternative Name:	KSR1 (KSR1 Products)
Background:	<p>KSR1 is a molecular scaffold and positive regulator of the Raf/MEK/ERK phosphorylation cascade. It was initially considered to be a protein kinase acting in the Ras pathway. KSR1 is required for maximal ERK activation induced by growth factors and by some cytotoxic agents. In resting cells, phosphorylated KSR1 is cytoplasmic and in stimulated cells, dephosphorylated KSR1 is membrane associated.</p>

Target Details

Molecular Weight:	97 kDa
Gene ID:	16706
NCBI Accession:	NP_001335136
UniProt:	Q61097

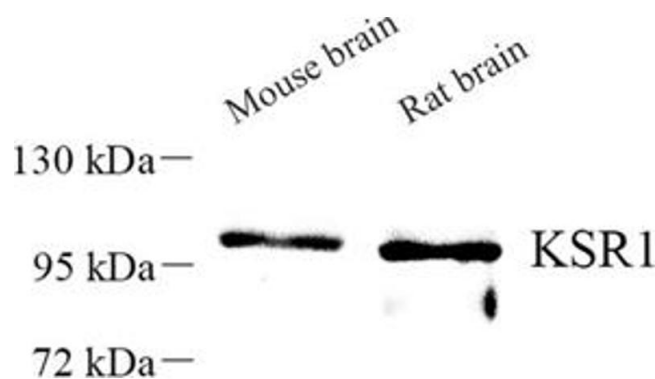
Application Details

Application Notes:	WB (M,R) 1:500-1:1000
Restrictions:	For Research Use only

Handling

Format:	Liquid
Buffer:	PBS, pH 7.4, 0.02 % sodium azide
Preservative:	Sodium azide
Precaution of Use:	This product contains Sodium azide: a POISONOUS AND HAZARDOUS SUBSTANCE which should be handled by trained staff only.
Storage:	-20 °C

Images



Western Blotting

Image 1. Western blot analysis of KSR1 (ABIN7074435) at dilution of 1: 500