

Datasheet for ABIN7074440

anti-KIF5B antibody

9 Images

[Go to Product page](#)

Overview

Quantity:	100 µL
Target:	KIF5B
Reactivity:	Mouse, Rat
Host:	Rabbit
Clonality:	Polyclonal
Conjugate:	This KIF5B antibody is un-conjugated
Application:	Western Blotting (WB), Immunohistochemistry (IHC), Immunofluorescence (IF)

Product Details

Immunogen:	KLH conjugated Synthetic peptide corresponding to Mouse KIF5B
Cross-Reactivity:	Rat
Purification:	Affinity purification

Target Details

Target:	KIF5B
Alternative Name:	KIF5B (KIF5B Products)
Background:	Microtubule-dependent motor required for normal distribution of mitochondria and lysosomes. May be involved in the mechanisms of growth arrest induced by exposure to DNA-damaging drugs or by cellular senescence . Can induce formation of neurite-like membrane protrusions in non-neuronal cells in a ZFYVE27-dependent manner . Regulates centrosome and nuclear positioning during mitotic entry. During the G2 phase of the cell cycle in a BICD2-dependent

Target Details

manner, antagonizes dynein function and drives the separation of nuclei and centrosomes. Required for anterograde axonal transportation of MAPK8IP3/JIP3 which is essential for MAPK8IP3/JIP3 function in axon elongation .

Molecular Weight: 130 kDa

Gene ID: 16573

NCBI Accession: [NP_032474](#)

UniProt: [Q61768](#)

Pathways: [Peptide Hormone Metabolism](#), [Ribonucleoprotein Complex Subunit Organization](#)

Application Details

Application Notes: WB (M,R) 1:2000-1:4000, IHC/IF (M,R) 1:500-1:1000

Restrictions: For Research Use only

Handling

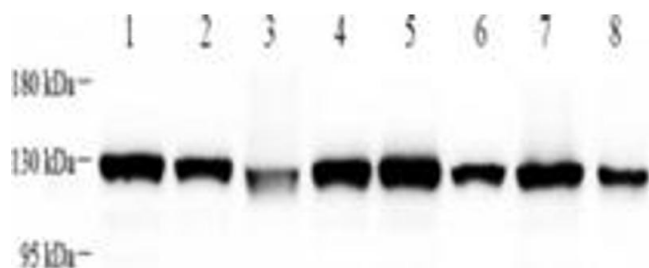
Format: Liquid

Buffer: PBS, pH 7.4, 0.02 % sodium azide

Preservative: Sodium azide

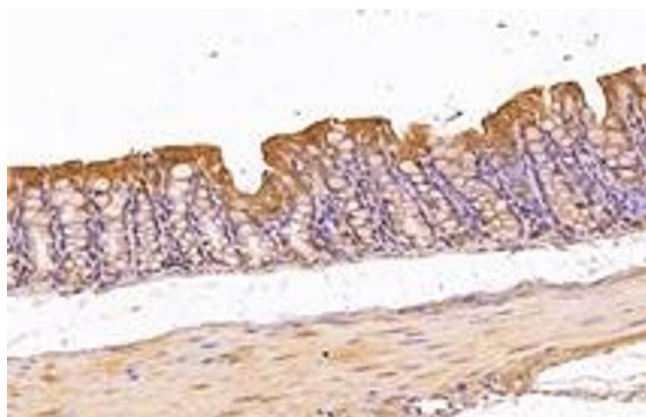
Precaution of Use: This product contains Sodium azide: a POISONOUS AND HAZARDOUS SUBSTANCE which should be handled by trained staff only.

Storage: -20 °C



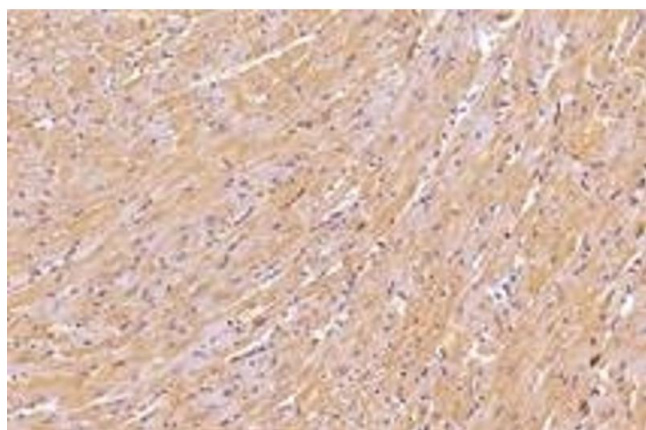
Western Blotting

Image 1. Western blot analysis of KIF5B (ABIN7074440), at dilution of 1: 4000, Lane 1: Mouse heart tissue lysate, Lane 2: Mouse brain tissue lysate, Lane 3: Mouse uterus tissue lysate, Lane 4: Mouse skin tissue lysate, Lane 5: Rat heart tissue lysate, Lane 6: Rat brain tissue lysate, Lane 7: Rat uterus tissue lysate, Lane 8: Rat skin tissue lysate



Immunohistochemistry (Paraffin-embedded Sections)

Image 2. Immunohistochemistry analysis of paraffin-embedded mouse colon using, KIF5B (ABIN7074440) at dilution of 1: 1000



Immunohistochemistry (Paraffin-embedded Sections)

Image 3. Immunohistochemistry analysis of paraffin-embedded mouse heart using, KIF5B (ABIN7074440) at dilution of 1: 1000

Please check the [product details page](#) for more images. Overall 9 images are available for ABIN7074440.