



[Go to Product page](#)

Datasheet for ABIN7074453

anti-LARP1 antibody

7 Images

Overview

Quantity:	100 µL
Target:	LARP1
Reactivity:	Human, Mouse, Rat
Host:	Rabbit
Clonality:	Polyclonal
Application:	Western Blotting (WB), Immunofluorescence (IF), Immunohistochemistry (IHC)

Product Details

Immunogen:	Recombinant protein corresponding to Mouse Salivary alpha amylase
Cross-Reactivity:	Human, Rat
Purification:	Affinity purification

Target Details

Target:	LARP1
Alternative Name:	LARP (LARP1 Products)
Background:	Filament-forming cytoskeletal GTPase . May play a role in cytokinesis (Potential).
Molecular Weight:	42 kDa
Gene ID:	54204
NCBI Accession:	NP_059489
UniProt:	P42209

Target Details

Pathways: [SARS-CoV-2 Protein Interactome](#), [The Global Phosphorylation Landscape of SARS-CoV-2 Infection](#)

Application Details

Application Notes: WB (M,R) 1:500-1:1000, IHC/IF (H,M,R) 1:700-1:1400/1:600-1:2000

Restrictions: For Research Use only

Handling

Format: Liquid

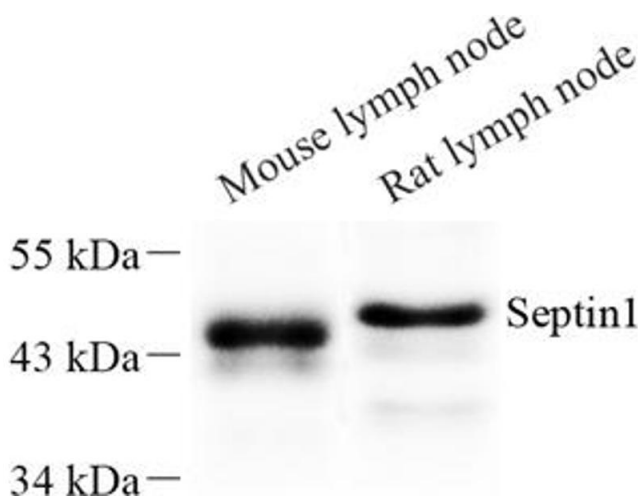
Buffer: PBS, pH 7.4, 0.02 % sodium azide

Preservative: Sodium azide

Precaution of Use: This product contains Sodium azide: a POISONOUS AND HAZARDOUS SUBSTANCE which should be handled by trained staff only.

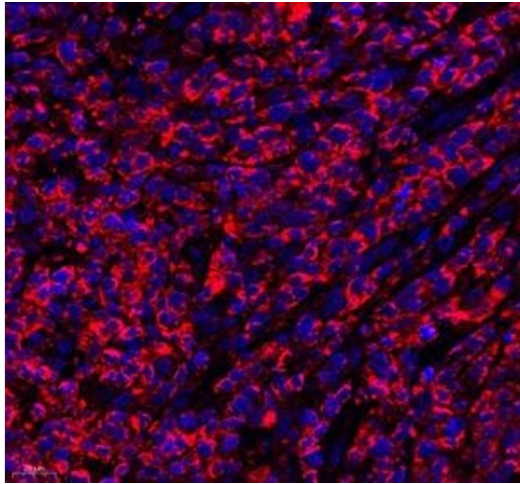
Storage: -20 °C

Images



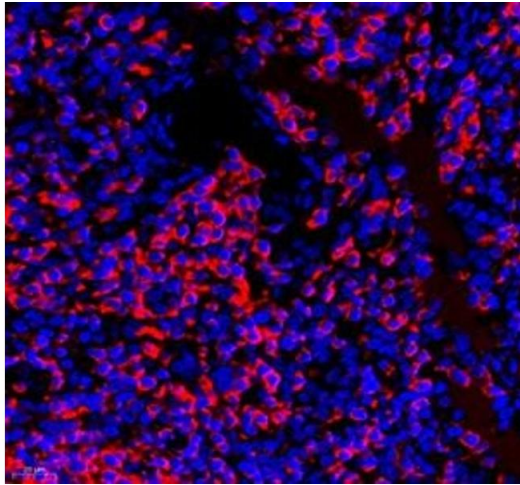
Western Blotting

Image 1. Western blot analysis of Septin1 (ABIN7074453) at dilution of 1: 500



Immunofluorescence (Paraffin-embedded Sections)

Image 2. Immunofluorescence of paraffin embedded human lymphoma using septin1 (ABIN7074453) at dilution of 1: 650 (400x lens)



Immunofluorescence (Paraffin-embedded Sections)

Image 3. Immunofluorescence of paraffin embedded human tonsil using septin1 (ABIN7074453) at dilution of 1: 650 (400x lens)

Please check the [product details page](#) for more images. Overall 7 images are available for ABIN7074453.