

Datasheet for ABIN7074457
anti-Lactoferrin antibody

8 Images

[Go to Product page](#)

Overview

Quantity:	100 µL
Target:	Lactoferrin (LTF)
Reactivity:	Mouse, Rat
Host:	Rabbit
Clonality:	Polyclonal
Conjugate:	This Lactoferrin antibody is un-conjugated
Application:	Western Blotting (WB), Immunohistochemistry (IHC), Immunofluorescence (IF)

Product Details

Immunogen:	Recombinant protein corresponding to Mouse Lactoferrin
Cross-Reactivity:	Rat
Purification:	Affinity purification

Target Details

Target:	Lactoferrin (LTF)
Alternative Name:	Lactoferrin (LTF Products)
Background:	This gene is a member of the transferrin family of genes and its protein product is found in the secondary granules of neutrophils. The protein is a major iron-binding protein in milk and body secretions with an antimicrobial activity, making it an important component of the non-specific immune system. The protein demonstrates a broad spectrum of properties, including regulation of iron homeostasis, host defense against a broad range of microbial infections, anti-

Target Details

inflammatory activity, regulation of cellular growth and differentiation and protection against cancer development and metastasis.

Molecular Weight: 78 kDa

Gene ID: 17002

NCBI Accession: [NP_032548](#)

UniProt: [P08071](#)

Pathways: [Transition Metal Ion Homeostasis](#)

Application Details

Application Notes: WB (M,R) 1:500-1:1000, IHC/IF (M,R) 1:700-1:4000/1:700-1:4000

Restrictions: For Research Use only

Handling

Format: Liquid

Buffer: PBS, pH 7.4, 0.02 % sodium azide

Preservative: Sodium azide

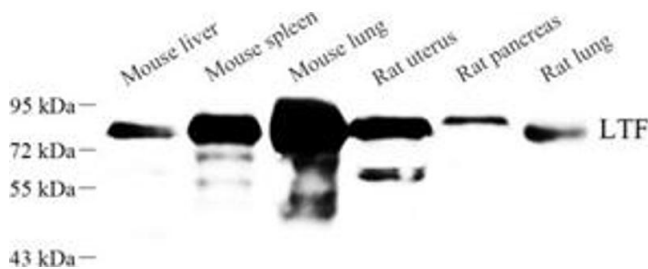
Precaution of Use: This product contains Sodium azide: a POISONOUS AND HAZARDOUS SUBSTANCE which should be handled by trained staff only.

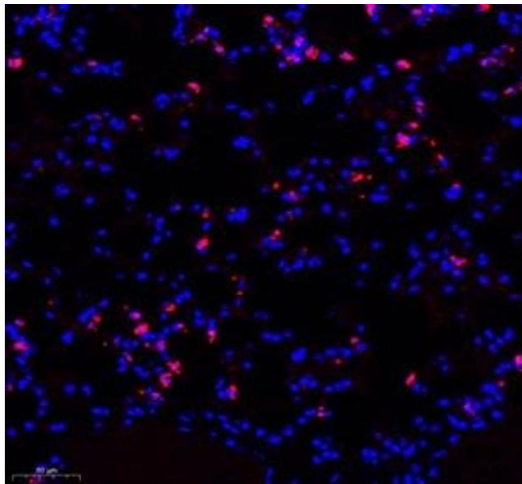
Storage: -20 °C

Images

Western Blotting

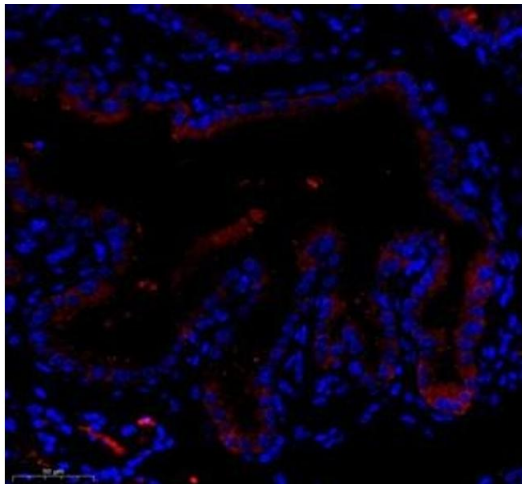
Image 1. Western blot analysis of LTF (ABIN7074457) at dilution of 1: 1000





Immunofluorescence (Paraffin-embedded Sections)

Image 2. Immunofluorescence of paraffin embedded mouse lung using LTF (ABIN7074457) at dilution of 1: 700 (250x lens)



Immunofluorescence (Paraffin-embedded Sections)

Image 3. Immunofluorescence of paraffin embedded mouse placenta using LTF (ABIN7074457) at dilution of 1: 700 (300x lens)

Please check the [product details page](#) for more images. Overall 8 images are available for ABIN7074457.