

Datasheet for ABIN7074482

anti-LRRC25 antibody[Go to Product page](#)**1** Image

Overview

Quantity:	100 µL
Target:	LRRC25
Reactivity:	Human, Mouse, Rat
Host:	Rabbit
Clonality:	Polyclonal
Conjugate:	This LRRC25 antibody is un-conjugated
Application:	Western Blotting (WB)

Product Details

Immunogen:	Recombinant protein corresponding to Mouse LRRC25
Cross-Reactivity:	Human, Rat
Purification:	Affinity purification

Target Details

Target:	LRRC25
Alternative Name:	LRRC25/MAPA (LRRC25 Products)
Background:	<p>LRRC25 is a 305 amino acid protein that contains two LRR repeats. LRRC25 is a single-pass type I membrane protein that is expressed in monocyte-derived dendritic cells (MDDC), granulocytes, monocytes, plasmacytoid dendritic cells (PDC), B-lymphocytes, peripheral blood leukocytes, spleen and bone marrow, with lower levels in lymph nodes, fetal liver, and appendix.</p> <p>LRRC25 may play a role in the activation of cells of innate and acquired immunity.</p>

Target Details

Molecular Weight:	33 kDa
Gene ID:	211228
NCBI Accession:	NP_694714
UniProt:	Q8K1T1

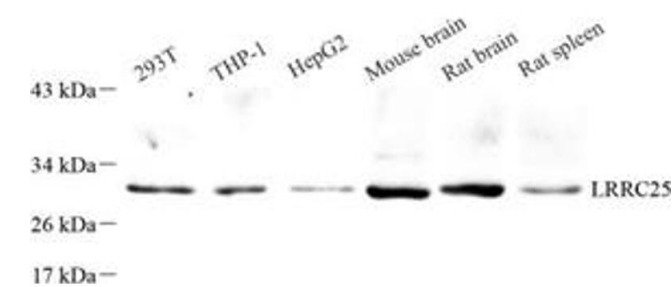
Application Details

Application Notes:	WB (H,M,R) 1:500-1:1000
Restrictions:	For Research Use only

Handling

Format:	Liquid
Buffer:	PBS, pH 7.4, 0.02 % sodium azide
Preservative:	Sodium azide
Precaution of Use:	This product contains Sodium azide: a POISONOUS AND HAZARDOUS SUBSTANCE which should be handled by trained staff only.
Storage:	-20 °C

Images



Western Blotting

Image 1. Western blot analysis of LRRC25 (ABIN7074482) at dilution of 1: 500