



[Go to Product page](#)

## Datasheet for ABIN7074493 anti-LI Cadherin antibody

### 5 Images

#### Overview

Quantity:	100 µL
Target:	LI Cadherin
Reactivity:	Human, Mouse, Rat
Host:	Rabbit
Clonality:	Polyclonal
Conjugate:	This LI Cadherin antibody is un-conjugated
Application:	Immunohistochemistry (IHC), Immunofluorescence (IF)

#### Product Details

Immunogen:	Recombinant protein corresponding to Mouse LI Cadherin
Cross-Reactivity:	Human, Rat
Purification:	Affinity purification

#### Target Details

Target:	LI Cadherin
Abstract:	<a href="#">LI Cadherin Products</a>
Background:	This gene is a member of the cadherin super family, genes encoding calcium-dependent, membrane-associated glycoproteins. The encoded protein is cadherin-like, consisting of an extracellular region, containing 7 cadherin domains, and a transmembrane region but lacking the conserved cytoplasmic domain. The protein is a component of the gastrointestinal tract and pancreatic ducts, acting as an intestinal proton-dependent peptide transporter in the first

## Target Details

step in oral absorption of many medically important peptide-based drugs. The protein may also play a role in the morphological organization of liver and intestine.

Gene ID: 12557

NCBI Accession: [NP\\_062727](#)

UniProt: [Q9R100](#)

## Application Details

Application Notes: IHC/IF (H,M,R) 1:1000-1:1600/1:500-1:2000

Restrictions: For Research Use only

## Handling

Format: Liquid

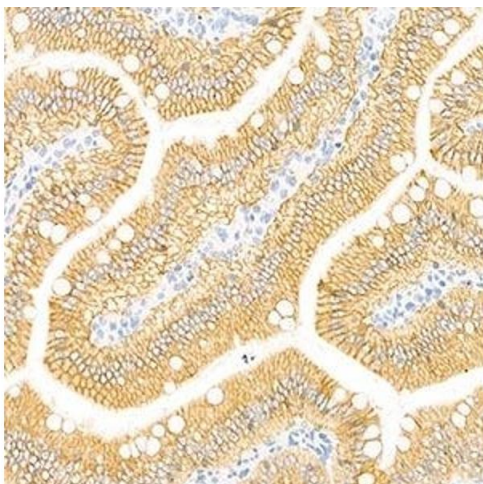
Buffer: PBS, pH 7.4, 0.02 % sodium azide

Preservative: Sodium azide

Precaution of Use: This product contains Sodium azide: a POISONOUS AND HAZARDOUS SUBSTANCE which should be handled by trained staff only.

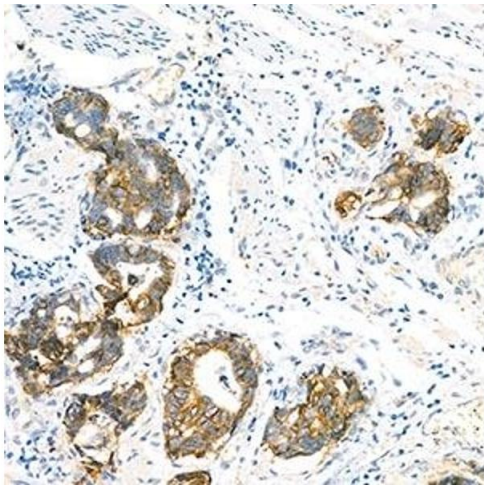
Storage: -20 °C

## Images



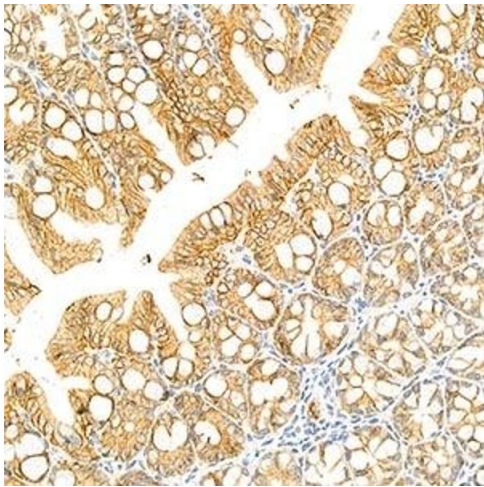
### Immunohistochemistry (Paraffin-embedded Sections)

**Image 1.** Immunohistochemistry analysis of paraffin-embedded rat small intestine using LI Cadherin (ABIN7074493) at dilution of 1: 1500



#### Immunohistochemistry (Paraffin-embedded Sections)

**Image 2.** Immunohistochemistry analysis of paraffin-embedded human gastric cancer using LI Cadherin (ABIN7074493) at dilution of 1: 1500



#### Immunohistochemistry (Paraffin-embedded Sections)

**Image 3.** Immunohistochemistry analysis of paraffin-embedded mouse colon using LI Cadherin (ABIN7074493) at dilution of 1: 1500

Please check the [product details page](#) for more images. Overall 5 images are available for ABIN7074493.