

Datasheet for ABIN7074502

anti-LAT antibody

7 Images

[Go to Product page](#)

Overview

Quantity:	100 µL
Target:	LAT
Reactivity:	Human, Mouse, Rat
Host:	Rabbit
Clonality:	Polyclonal
Conjugate:	This LAT antibody is un-conjugated
Application:	Western Blotting (WB), Immunohistochemistry (IHC), Immunofluorescence (IF)

Product Details

Immunogen:	Recombinant protein corresponding to Mouse LAT
Cross-Reactivity:	Human, Rat
Purification:	Affinity purification

Target Details

Target:	LAT
Alternative Name:	LAT (LAT Products)
Background:	Linker for activation of T-cells family member 1 (LAT) is a single-pass type III membrane protein which is required for TCR (T-cell antigen receptor) and pre-TCR-mediated signaling, both in mature T-cells and during their development This protein is involved in FCGR3 (low affinity immunoglobulin gamma Fc region receptor III)-mediated signaling in natural killer cells and FCER1 (high affinity immunoglobulin epsilon receptor)-mediated signaling in mast cells.

Target Details

Functionally T cell receptor (TCR) activation results in tyrosine phosphorylation of LAT, leading to the direct interaction with several proteins, including PLC-gamma 1, Grb2 and Gads. These direct ligands then mediate the indirect interaction of LAT with proteins such as SLP-76, Vav1 and Itk. PLC-gamma 1, Vav1 and Itk contain pleckstrin homology (PH) domains that interact with the enzymatic product of phosphoinositide-3-kinase (PI3k).

Molecular Weight: 38 kDa

Gene ID: 16797

NCBI Accession: [NP_034819](#)

UniProt: [O54957](#)

Pathways: [TCR Signaling](#), [Fc-epsilon Receptor Signaling Pathway](#)

Application Details

Application Notes: WB (M,R) 1:500-1:1000, IHC/IF (H,M,R) 1:1000-1:4000/1:500-1:3000

Restrictions: For Research Use only

Handling

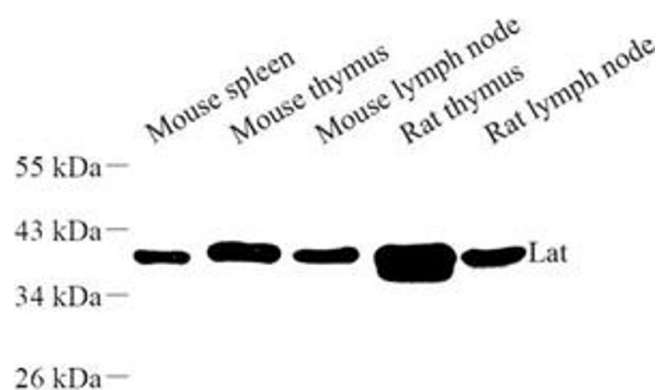
Format: Liquid

Buffer: PBS, pH 7.4, 0.02 % sodium azide

Preservative: Sodium azide

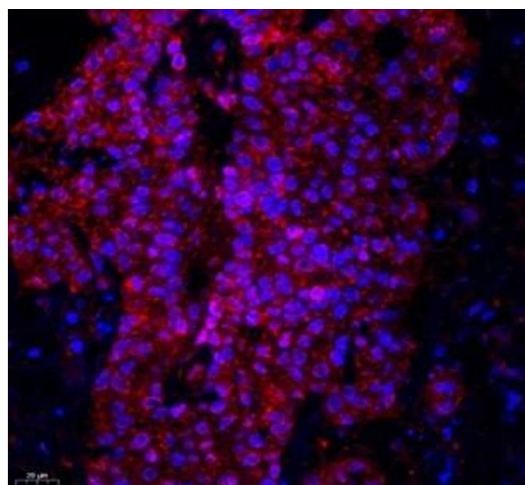
Precaution of Use: This product contains Sodium azide: a POISONOUS AND HAZARDOUS SUBSTANCE which should be handled by trained staff only.

Storage: -20 °C



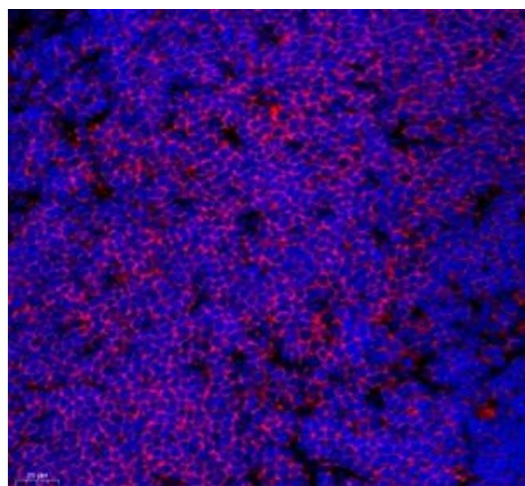
Western Blotting

Image 1. Western blot analysis of Lat (ABIN7074502) at dilution of 1: 500



Immunofluorescence (Paraffin-embedded Sections)

Image 2. Immunofluorescence of paraffin embedded human colon using Lat (ABIN7074502) at dilution of 1: 2100 (400x lens)



Immunofluorescence (Paraffin-embedded Sections)

Image 3. Immunofluorescence of paraffin embedded mouse thymus using Lat (ABIN7074502) at dilution of 1: 2100 (400x lens)

Please check the [product details page](#) for more images. Overall 7 images are available for ABIN7074502.