



Datasheet for ABIN7074503 anti-LAT2 antibody



[Go to Product page](#)

12 Images

Overview

Quantity:	100 µL
Target:	LAT2
Reactivity:	Mouse, Rat
Host:	Rabbit
Clonality:	Polyclonal
Conjugate:	This LAT2 antibody is un-conjugated
Application:	Immunohistochemistry (IHC), Immunofluorescence (IF)

Product Details

Immunogen:	KLH conjugated Synthetic peptide corresponding to Mouse LAT2
Cross-Reactivity:	Rat
Purification:	Affinity purification

Target Details

Target:	LAT2
Alternative Name:	LAT2 (LAT2 Products)
Background:	L-amino acid transporter protein-2 (LAT2), a non-glycosylated membrane protein, complexes with CD98 to contribute to reabsorption of neutral amino acids in renal epithelia and blood-tissue barriers. The gene encoding LAT2 is expressed primarily in the kidney, but also to a lesser extent in placenta, brain, liver, spleen, skeletal muscle, heart, small intestine, and lung. Transfection with the antisense sequence of LAT2 suggests that LAT2 expression plays a

Target Details

major role in net basolateral efflux of cysteine, and points to LAT2 as a candidate gene to modulate cysteine reabsorption.

Gene ID: 50934

UniProt: [Q9QXW9](#)

Pathways: [Fc-epsilon Receptor Signaling Pathway](#), [BCR Signaling](#)

Application Details

Application Notes: IHC/IF (M,R) 1:300-1:600

Restrictions: For Research Use only

Handling

Format: Liquid

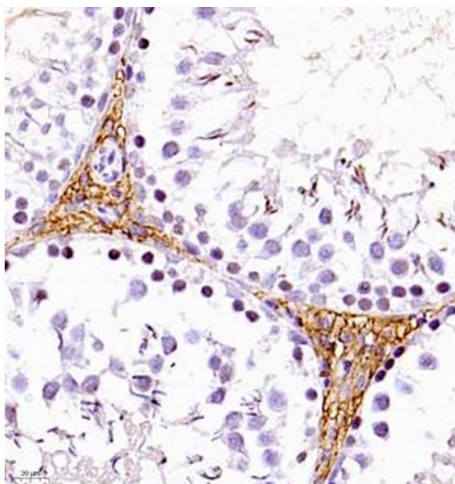
Buffer: PBS, pH 7.4, 0.02 % sodium azide

Preservative: Sodium azide

Precaution of Use: This product contains Sodium azide: a POISONOUS AND HAZARDOUS SUBSTANCE which should be handled by trained staff only.

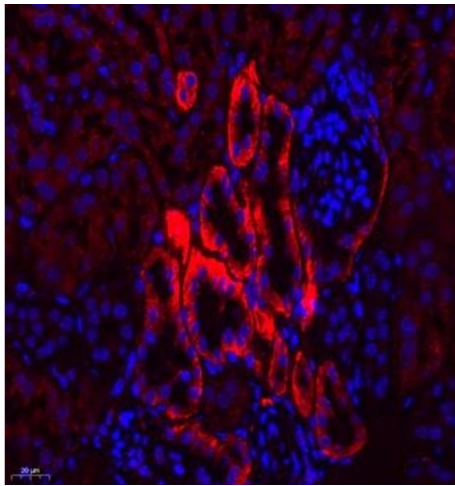
Storage: -20 °C

Images



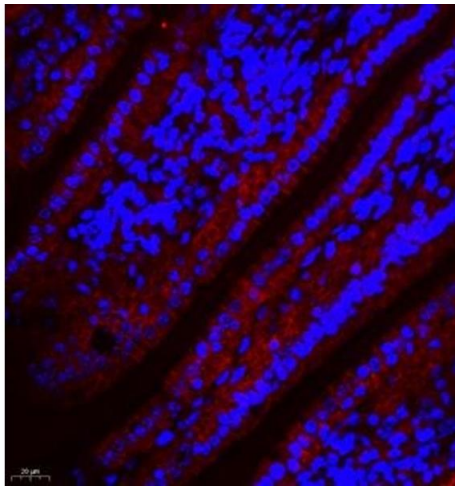
Immunohistochemistry (Paraffin-embedded Sections)

Image 1. Immunohistochemistry of paraffin embedded rat testis using SLC7A8 (ABIN7074503) at dilution of 1:1100 (400x lens)



Immunofluorescence (Paraffin-embedded Sections)

Image 2. Immunofluorescence of paraffin embedded mouse kidney using SLC7A8 (ABIN7074503) at dilution of 1:300 (400x lens)



Immunofluorescence (Paraffin-embedded Sections)

Image 3. Immunofluorescence of paraffin embedded mouse small intestine using SLC7A8 (ABIN7074503) at dilution of 1:300 (400x lens)

Please check the [product details page](#) for more images. Overall 12 images are available for ABIN7074503.