

Datasheet for ABIN7074541

**anti-LOXL4 antibody**

## 2 Images

[Go to Product page](#)

## Overview

Quantity:	100 µL
Target:	LOXL4
Reactivity:	Human, Mouse
Host:	Rabbit
Clonality:	Polyclonal
Conjugate:	This LOXL4 antibody is un-conjugated
Application:	Immunohistochemistry (IHC), Immunofluorescence (IF)

## Product Details

Immunogen:	Recombinant protein corresponding to Mouse LOXL4
Cross-Reactivity:	Human
Purification:	Affinity purification

## Target Details

Target:	LOXL4
Alternative Name:	LOXL4 ( <a href="#">LOXL4 Products</a> )
Background:	This gene encodes a member of the lysyl oxidase gene family. The prototypic member of the family is essential to the biogenesis of connective tissue, encoding an extracellular copper-dependent amine oxidase that catalyses the first step in the formation of crosslinks in collagens and elastin. A highly conserved amino acid sequence at the C-terminus end appears to be sufficient for amine oxidase activity, suggesting that each family member may retain this

## Target Details

function. The N-terminus is poorly conserved and may impart additional roles in developmental regulation, senescence, tumor suppression, cell growth control, and chemotaxis to each member of the family.

Gene ID: 67573

NCBI Accession: [NP\\_444313](#)

UniProt: [Q924C6](#)

## Application Details

Application Notes: IHC/IF (H,M) 1:400-1:800

Restrictions: For Research Use only

## Handling

Format: Liquid

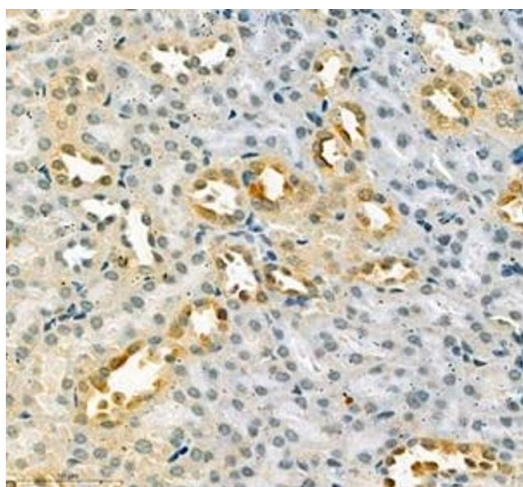
Buffer: PBS, pH 7.4, 0.02 % sodium azide

Preservative: Sodium azide

Precaution of Use: This product contains Sodium azide: a POISONOUS AND HAZARDOUS SUBSTANCE which should be handled by trained staff only.

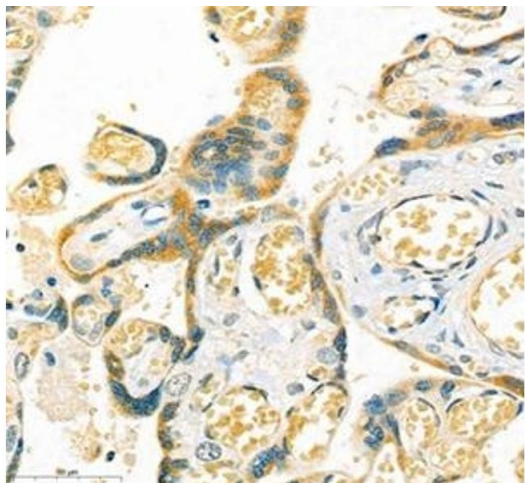
Storage: -20 °C

## Images



### Immunohistochemistry (Paraffin-embedded Sections)

**Image 1.** Immunohistochemistry of paraffin embedded mouse kidney using LOXL4 (ABIN7074541) at dilution of 1:400 (400x lens)



#### Immunohistochemistry (Paraffin-embedded Sections)

**Image 2.** Immunohistochemistry of paraffin embedded human placenta using LOXL4 (ABIN7074541) at dilution of 1:400 (400x lens)