

Datasheet for ABIN7074548

anti-MVP antibody

5 Images

[Go to Product page](#)

Overview

Quantity:	100 µL
Target:	MVP
Reactivity:	Human, Mouse, Rat
Host:	Rabbit
Clonality:	Polyclonal
Conjugate:	This MVP antibody is un-conjugated
Application:	Western Blotting (WB), Immunohistochemistry (IHC), Immunofluorescence (IF)

Product Details

Immunogen:	KLH conjugated Synthetic peptide corresponding to Mouse MVP
Cross-Reactivity:	Human, Rat
Purification:	Affinity purification

Target Details

Target:	MVP
Alternative Name:	MVP (MVP Products)
Background:	This gene encodes the major component of the vault complex. Vaults are multi-subunit ribonucleoprotein structures that may be involved in nucleo-cytoplasmic transport. The encoded protein may play a role in multiple cellular processes by regulating the MAP kinase, JAK/STAT and phosphoinositide 3-kinase/Akt signaling pathways. The encoded protein also plays a role in multidrug resistance, and expression of this gene may be a prognostic marker for

Target Details

	several types of cancer. Alternatively spliced transcript variants have been observed for this gene.
Molecular Weight:	110 kDa
Gene ID:	78388
NCBI Accession:	XP_011240254
UniProt:	Q9EQK5

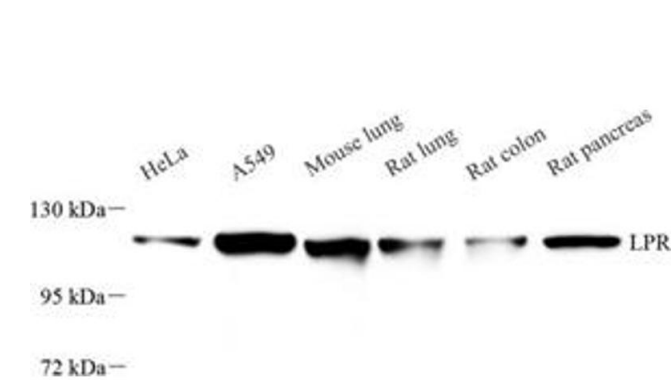
Application Details

Application Notes:	WB (H,M,R) 1:500-1:1000, IHC/IF (H,M,R) 1:100-1:300
Restrictions:	For Research Use only

Handling

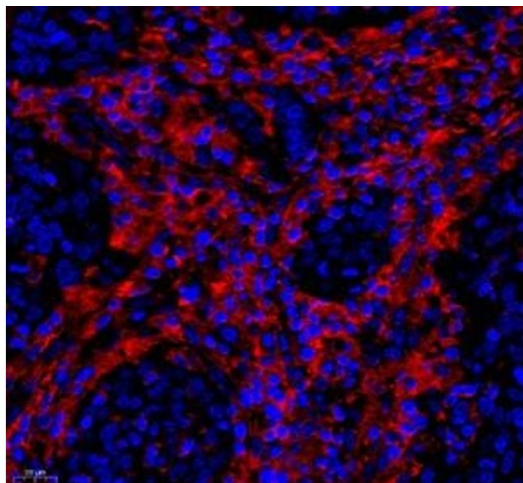
Format:	Liquid
Buffer:	PBS, pH 7.4, 0.02 % sodium azide
Preservative:	Sodium azide
Precaution of Use:	This product contains Sodium azide: a POISONOUS AND HAZARDOUS SUBSTANCE which should be handled by trained staff only.
Storage:	-20 °C

Images



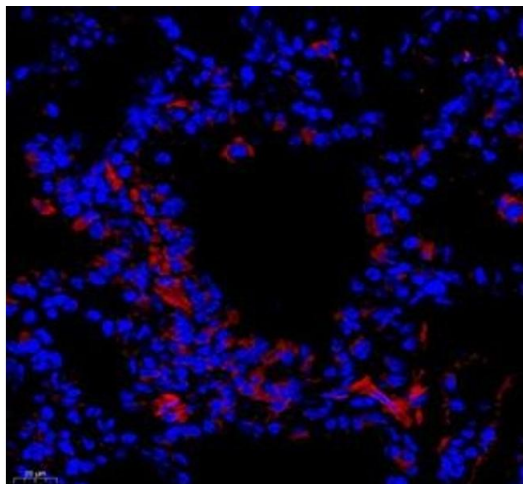
Western Blotting

Image 1. Western blot analysis of LRP (ABIN7074548) at dilution of 1: 500



Immunofluorescence (Paraffin-embedded Sections)

Image 2. Immunofluorescence of paraffin embedded human colon using LRP (ABIN7074548) at dilution of 1: 250 (400x lens)



Immunofluorescence (Paraffin-embedded Sections)

Image 3. Immunofluorescence of paraffin embedded mouse lung using LRP (ABIN7074548) at dilution of 1: 250 (400x lens)

Please check the [product details page](#) for more images. Overall 5 images are available for ABIN7074548.