

Datasheet for ABIN7074549

anti-MAL2 antibody

11 Images

[Go to Product page](#)

Overview

Quantity:	100 µL
Target:	MAL2
Reactivity:	Human, Mouse, Rat
Host:	Rabbit
Clonality:	Polyclonal
Conjugate:	This MAL2 antibody is un-conjugated
Application:	Western Blotting (WB), Immunohistochemistry (IHC), Immunofluorescence (IF)

Product Details

Immunogen:	KLH conjugated Synthetic peptide corresponding to Mouse MAL2
Cross-Reactivity:	Human, Rat
Purification:	Affinity purification

Target Details

Target:	MAL2
Alternative Name:	MAL2 (MAL2 Products)
Background:	MAL2 (mal, T-cell differentiation protein 2) is a 176 amino acid multi-pass membrane protein that is associated with lipid rafts and contains one MARVEL domain. Expressed predominately in liver, kidney and lung, MAL2 functions as a member of the polarized machinery transport system and is required for transcytosis, a transporter pathway used to deliver membrane-bound cargo from perinuclear endosomes to the apical surface in a raft-dependent manner.

Target Details

Differential expression of MAL2 is associated with several cancers, including renal cell carcinoma and childhood leukemia, suggesting a role for MAL2 in tumorigensis.

Molecular Weight: 30 kDa

Gene ID: 105853

NCBI Accession: [NP_849251](#)

UniProt: [Q8BI08](#)

Application Details

Application Notes: WB (H,M) 1:500-1:1000, IHC/IF (M,R) 1:300-1:1400/1:600-1:1600

Restrictions: For Research Use only

Handling

Format: Liquid

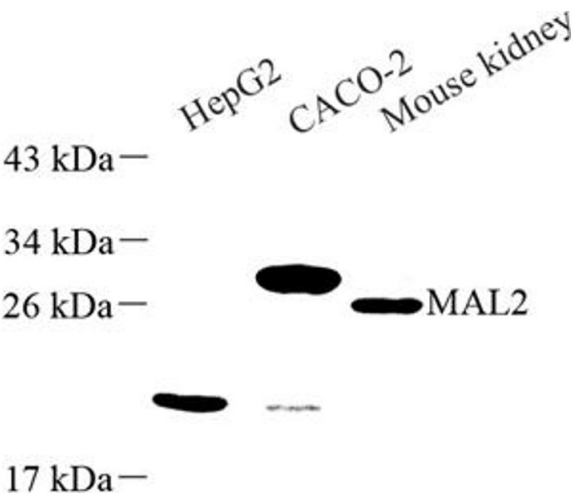
Buffer: PBS, pH 7.4, 0.02 % sodium azide

Preservative: Sodium azide

Precaution of Use: This product contains Sodium azide: a POISONOUS AND HAZARDOUS SUBSTANCE which should be handled by trained staff only.

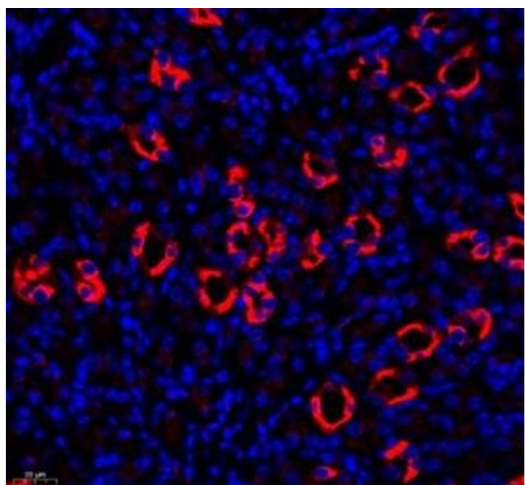
Storage: -20 °C

Images



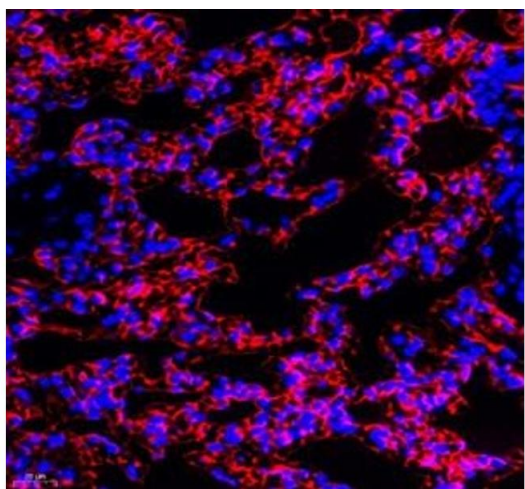
Western Blotting

Image 1. Western blot analysis of MAL2 (ABIN7074549) at dilution of 1: 500



Immunofluorescence (Paraffin-embedded Sections)

Image 2. Immunofluorescence of paraffin embedded mouse kidney using MAL2 (ABIN7074549) at dilution of 1: 650 (400x lens)



Immunofluorescence (Paraffin-embedded Sections)

Image 3. Immunofluorescence of paraffin embedded mouse lung using MAL2 (ABIN7074549) at dilution of 1: 650 (400x lens)

Please check the [product details page](#) for more images. Overall 11 images are available for ABIN7074549.