

Datasheet for ABIN7074550

**anti-Mannose Receptor antibody****2** Images[Go to Product page](#)

## Overview

Quantity:	100 µL
Target:	Mannose Receptor (MR)
Reactivity:	Mouse
Host:	Rabbit
Clonality:	Polyclonal
Conjugate:	This Mannose Receptor antibody is un-conjugated
Application:	Immunohistochemistry (IHC), Immunofluorescence (IF)

## Product Details

Immunogen:	KLH conjugated Synthetic peptide corresponding to Mouse Mannose Receptor
Purification:	Affinity purification

## Target Details

Target:	Mannose Receptor (MR)
Alternative Name:	Mannose Receptor ( <a href="#">MR Products</a> )
Background:	CD206, also named as MMR, CLEC13D and MRC1, is a type I membrane receptor that mediates the endocytosis of glycoproteins by macrophages. CD206 has been shown to bind high-mannose structures on the surface of potentially pathogenic viruses, bacteria, and fungi so that they can be neutralized by phagocytic engulfment. CD206 is a 170 kDa transmembrane glycoprotein which contains 5 domains: an amino-terminal cysteine-rich region, a fibronectin type II repeat, a series of eight tandem lectin-like carbohydrate recognition domains

## Target Details

(responsible for the recognition of mannose and fucose), a transmembrane domain, and an intracellular carboxy-terminal tail.

Gene ID: 17533

UniProt: [Q61830](#)

## Application Details

Application Notes: IHC/IF (M) 1:400-1:800

Restrictions: For Research Use only

## Handling

Format: Liquid

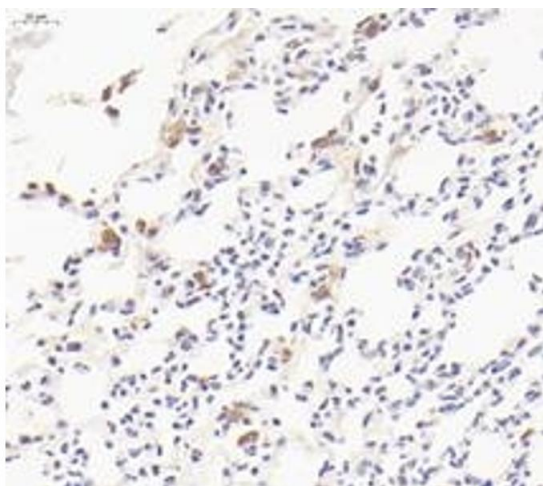
Buffer: PBS, pH 7.4, 0.02 % sodium azide

Preservative: Sodium azide

Precaution of Use: This product contains Sodium azide: a POISONOUS AND HAZARDOUS SUBSTANCE which should be handled by trained staff only.

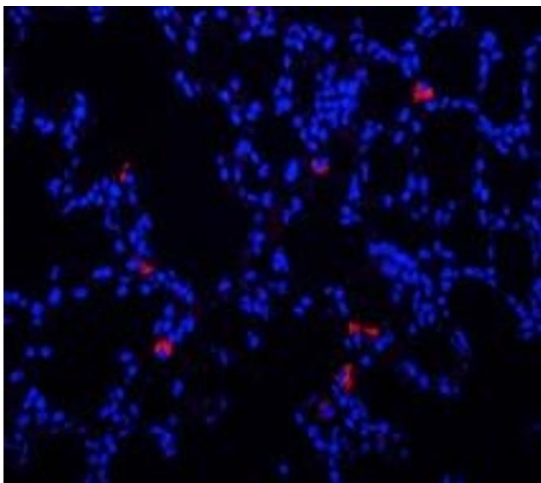
Storage: -20 °C

## Images



### Immunohistochemistry (Paraffin-embedded Sections)

**Image 1.** Immunohistochemistry analysis of paraffin-embedded mouse lung with LPS treated for 24h using CD206 (ABIN7074550) at dilution of 1: 800



#### Immunofluorescence (fixed cells)

**Image 2.** Immunofluorescent analysis of paraformaldehyde-fixed mouse lung with LPS treated for 24h using CD206 (ABIN7074550) at dilution of 1: 800