

Datasheet for ABIN7074575

## anti-MECOM antibody

### 5 Images



[Go to Product page](#)

### Overview

Quantity:	100 µL
Target:	MECOM
Reactivity:	Human, Mouse, Rat
Host:	Rabbit
Clonality:	Polyclonal
Conjugate:	This MECOM antibody is un-conjugated
Application:	Western Blotting (WB), Immunohistochemistry (IHC), Immunofluorescence (IF)

### Product Details

Immunogen:	KLH conjugated Synthetic peptide corresponding to Mouse EVI1
Cross-Reactivity:	Human, Rat
Purification:	Affinity purification

### Target Details

Target:	MECOM
Alternative Name:	EVI1 ( <a href="#">MECOM Products</a> )
Background:	<p>The protein encoded by this gene is a transcriptional regulator and oncoprotein that may be involved in hematopoiesis, apoptosis, development, and cell differentiation and proliferation. The encoded protein can interact with CTBP1, SMAD3, CREBBP, KAT2B, MAPK8, and MAPK9. This gene can undergo translocation with the AML1 gene, resulting in overexpression of this gene and the onset of leukemia. Several transcript variants encoding a few different isoforms</p>

## Target Details

have been found for this gene.

Molecular Weight: 118 kDa

Gene ID: 14013

NCBI Accession: [NP\\_067417](#)

UniProt: [P14404](#)

## Application Details

Application Notes: WB (H,M) 1:500-1:1000, IHC/IF (M,R) 1:2000-1:4000/1:700-1:1400

Restrictions: For Research Use only

## Handling

Format: Liquid

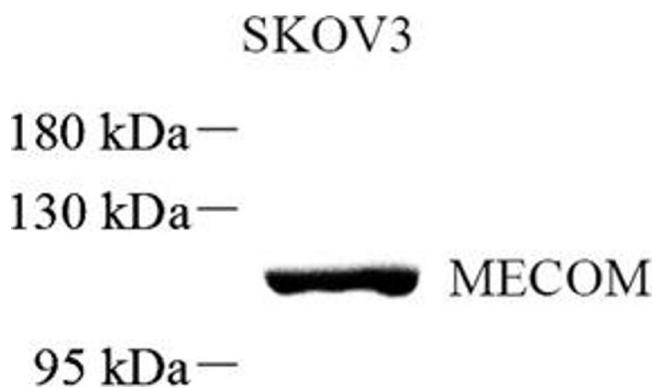
Buffer: PBS, pH 7.4, 0.02 % sodium azide

Preservative: Sodium azide

Precaution of Use: This product contains Sodium azide: a POISONOUS AND HAZARDOUS SUBSTANCE which should be handled by trained staff only.

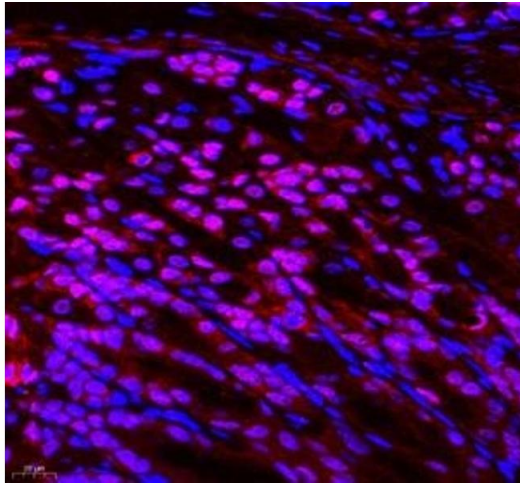
Storage: -20 °C

## Images



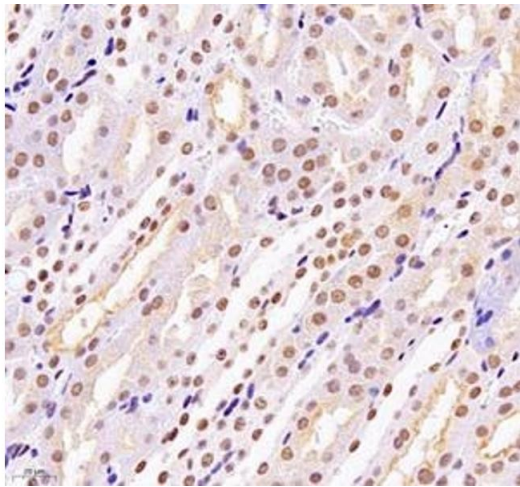
### Western Blotting

**Image 1.** Western blot analysis of MECOM (ABIN7074575) at dilution of 1: 500



#### Immunofluorescence (Paraffin-embedded Sections)

**Image 2.** Immunofluorescence of paraffin embedded mouse stomach using MECOM (ABIN7074575) at dilution of 1: 700 (400x lens)



#### Immunohistochemistry (Paraffin-embedded Sections)

**Image 3.** Immunohistochemistry of paraffin embedded mouse kidney using MECOM (ABIN7074575) at dilution of 1: 2200 (400x lens)

Please check the [product details page](#) for more images. Overall 5 images are available for ABIN7074575.