



Datasheet for ABIN7074590

anti-MLZE antibody



[Go to Product page](#)

1 Image

Overview

| | |
|--------------|-------------------------------------|
| Quantity: | 100 µL |
| Target: | MLZE |
| Reactivity: | Human, Mouse, Rat |
| Host: | Rabbit |
| Clonality: | Polyclonal |
| Conjugate: | This MLZE antibody is un-conjugated |
| Application: | Western Blotting (WB) |

Product Details

| | |
|-------------------|---|
| Immunogen: | KLH conjugated Synthetic peptide corresponding to Mouse GSDMC |
| Cross-Reactivity: | Human, Rat |
| Purification: | Affinity purification |

Target Details

| | |
|-------------------|--|
| Target: | MLZE |
| Alternative Name: | GSDMC (MLZE Products) |
| Background: | The N-terminal moiety promotes pyroptosis. May be acting by homooligomerizing within the membrane and forming pores. The physiological relevance of this observation is unknown. |
| Molecular Weight: | 70 kDa |
| Gene ID: | 83492 |

Target Details

NCBI Accession: [NP_113555](#)

UniProt: [Q99NB5](#)

Application Details

Application Notes: WB (H,M,R) 1:500-1:1000

Restrictions: For Research Use only

Handling

Format: Liquid

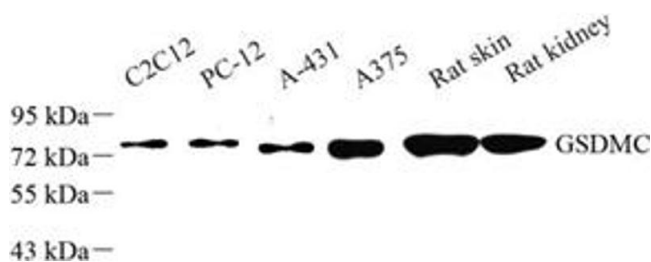
Buffer: PBS, pH 7.4, 0.02 % sodium azide

Preservative: Sodium azide

Precaution of Use: This product contains Sodium azide: a POISONOUS AND HAZARDOUS SUBSTANCE which should be handled by trained staff only.

Storage: -20 °C

Images



Western Blotting

Image 1. Western blot analysis of GSDMC (ABIN7074590) at dilution of 1: 50