

Datasheet for ABIN7074609
anti-MTHFD1 antibody



[Go to Product page](#)

3 Images

Overview

Quantity:	100 µL
Target:	MTHFD1
Reactivity:	Human, Mouse, Rat
Host:	Rabbit
Clonality:	Polyclonal
Conjugate:	This MTHFD1 antibody is un-conjugated
Application:	Western Blotting (WB), Immunofluorescence (IF), Immunohistochemistry (IHC)

Product Details

Immunogen:	Recombinant protein corresponding to Mouse MTHFD1
Cross-Reactivity:	Human, Rat
Purification:	Affinity purification

Target Details

Target:	MTHFD1
Alternative Name:	MTHFD1 (MTHFD1 Products)
Background:	This gene encodes a protein that possesses three distinct enzymatic activities, 5,10-methylenetetrahydrofolate dehydrogenase, 5,10-methenyltetrahydrofolate cyclohydrolase and 10-formyltetrahydrofolate synthetase. Each of these activities catalyzes one of three sequential reactions in the interconversion of 1-carbon derivatives of tetrahydrofolate, which are substrates for methionine, thymidylate, and de novo purine syntheses.

Target Details

Molecular Weight:	101 kDa
Gene ID:	108156
NCBI Accession:	NP_620084
UniProt:	Q922D8
Pathways:	Methionine Biosynthetic Process

Application Details

Application Notes:	WB (H,M,R) 1:1000-1:2000, IHC/IF (H) 1:500-1:1400
Restrictions:	For Research Use only

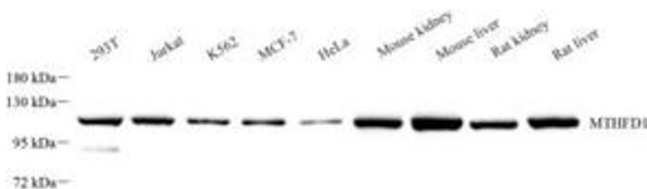
Handling

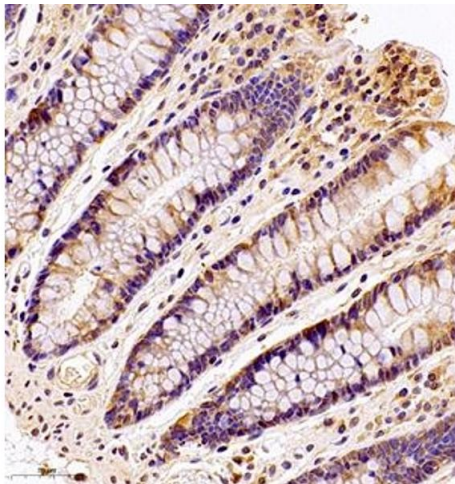
Format:	Liquid
Buffer:	PBS, pH 7.4, 0.02 % sodium azide
Preservative:	Sodium azide
Precaution of Use:	This product contains Sodium azide: a POISONOUS AND HAZARDOUS SUBSTANCE which should be handled by trained staff only.
Storage:	-20 °C

Images

Western Blotting

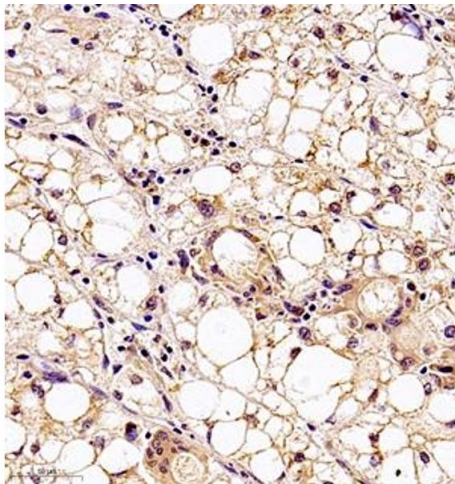
Image 1. Western blot analysis of MTHFD1 (ABIN7074609) at dilution of 1: 1000





Immunohistochemistry (Paraffin-embedded Sections)

Image 2. Immunohistochemistry analysis of paraffin embedded human colon using MTHFD1 (ABIN7074609) at dilution of 1: 700



Immunohistochemistry (Paraffin-embedded Sections)

Image 3. Immunohistochemistry analysis of paraffin embedded human liver cancer using MTHFD1 (ABIN7074609) at dilution of 1: 700