



[Go to Product page](#)

Datasheet for ABIN7074616
anti-MASTL antibody

2 Images

Overview

Quantity:	100 µL
Target:	MASTL
Reactivity:	Human, Mouse, Rat
Host:	Rabbit
Clonality:	Polyclonal
Conjugate:	This MASTL antibody is un-conjugated
Application:	Western Blotting (WB), Immunohistochemistry (IHC), Immunofluorescence (IF)

Product Details

Immunogen:	Recombinant protein corresponding to Mouse GWL
Cross-Reactivity:	Human, Rat
Purification:	Affinity purification

Target Details

Target:	MASTL
Alternative Name:	GWL (MASTL Products)
Background:	This gene encodes a microtubule-associated serine/threonine kinase. Mutations at this locus have been associated with autosomal dominant thrombocytopenia, also known as thrombocytopenia-2. Alternatively spliced transcript variants have been described for this locus.
Molecular Weight:	110 kDa

Target Details

Gene ID: 67121

NCBI Accession: [NP_080255](#)

UniProt: [Q8C0P0](#)

Application Details

Application Notes: WB (H,M,R) 1:250-1:500, IHC/IF (R) 1:1500-1:4000

Restrictions: For Research Use only

Handling

Format: Liquid

Buffer: PBS, pH 7.4, 0.02 % sodium azide

Preservative: Sodium azide

Precaution of Use: This product contains Sodium azide: a POISONOUS AND HAZARDOUS SUBSTANCE which should be handled by trained staff only.

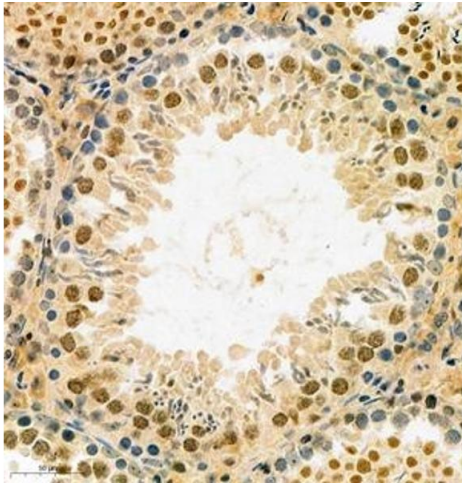
Storage: -20 °C

Images

Western Blotting

Image 1. Western blot analysis of GWL (ABIN7074616) at dilution of 1: 500





Immunohistochemistry (Paraffin-embedded Sections)

Image 2. Immunohistochemistry analysis of paraffin embedded rat testis using MASTL (ABIN7074616) at dilution of 1: 2100