

Datasheet for ABIN7074621

anti-MAP7 antibody

7 Images

[Go to Product page](#)

Overview

Quantity:	100 µL
Target:	MAP7
Reactivity:	Mouse, Rat
Host:	Rabbit
Clonality:	Polyclonal
Conjugate:	This MAP7 antibody is un-conjugated
Application:	Immunofluorescence (IF), Immunohistochemistry (IHC)

Product Details

Immunogen:	Recombinant protein corresponding to Mouse MAP7
Cross-Reactivity:	Rat
Purification:	Affinity purification

Target Details

Target:	MAP7
Alternative Name:	MAP7 (MAP7 Products)
Background:	The product of this gene is a microtubule-associated protein that is predominantly expressed in cells of epithelial origin. Microtubule-associated proteins are thought to be involved in microtubule dynamics, which is essential for cell polarization and differentiation. This protein has been shown to be able to stabilize microtubules, and may serve to modulate microtubule functions. Studies of the related mouse protein also suggested an essential role in microtubule

Target Details

function required for spermatogenesis.

Gene ID: 17761

NCBI Accession: [NP_001185564](#)

UniProt: [O88735](#)

Application Details

Application Notes: IHC/IF (M,R) 1:400-1:1200/1:400-1:1200

Restrictions: For Research Use only

Handling

Format: Liquid

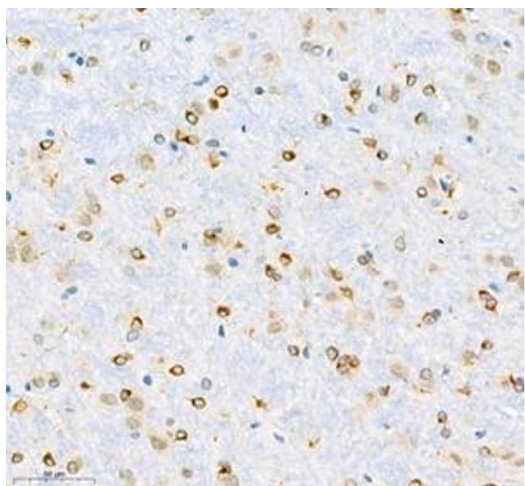
Buffer: PBS, pH 7.4, 0.02 % sodium azide

Preservative: Sodium azide

Precaution of Use: This product contains Sodium azide: a POISONOUS AND HAZARDOUS SUBSTANCE which should be handled by trained staff only.

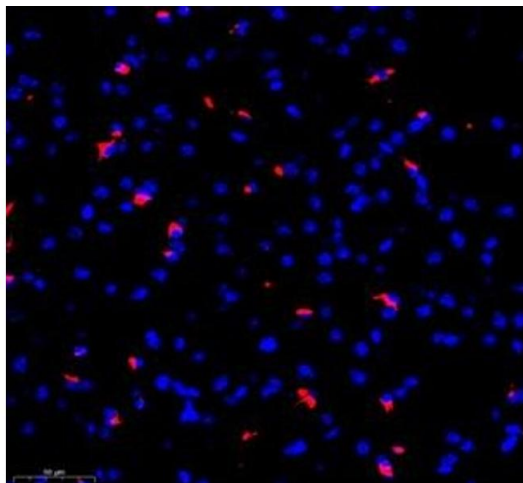
Storage: -20 °C

Images



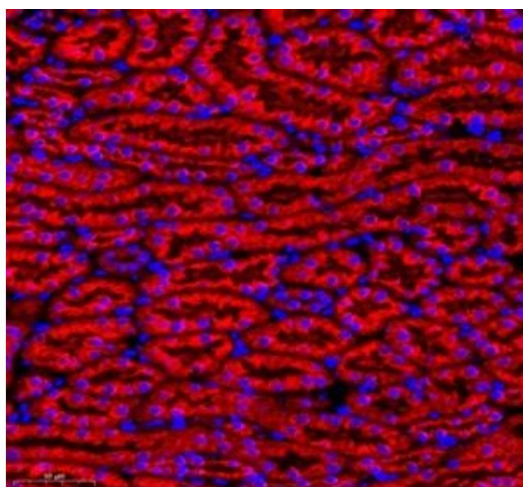
Immunohistochemistry (Paraffin-embedded Sections)

Image 1. Immunohistochemistry of paraffin embedded rat brain using MAP7 (ABIN7074621) at dilution of 1:600 (300x lens)



Immunofluorescence (Paraffin-embedded Sections)

Image 2. Immunofluorescence of paraffin embedded mouse brain using MAP7 (ABIN7074621) at dilution of 1:400 (300x lens)



Immunofluorescence (Paraffin-embedded Sections)

Image 3. Immunofluorescence of paraffin embedded mouse kidney using MAP7 (ABIN7074621) at dilution of 1:400 (300x lens)

Please check the [product details page](#) for more images. Overall 7 images are available for ABIN7074621.