



Datasheet for ABIN7074622 anti-MAP9 antibody



[Go to Product page](#)

3 Images

Overview

Quantity:	100 µL
Target:	MAP9
Reactivity:	Human, Mouse, Rat
Host:	Rabbit
Clonality:	Polyclonal
Conjugate:	This MAP9 antibody is un-conjugated
Application:	Immunofluorescence (IF), Immunohistochemistry (IHC)

Product Details

Immunogen:	Recombinant protein corresponding to Mouse MAP9
Cross-Reactivity:	Human, Rat
Purification:	Affinity purification

Target Details

Target:	MAP9
Alternative Name:	MAP9 (MAP9 Products)
Background:	MAP9 is a microtubule-associated protein required for spindle function, mitotic progression, and cytokinesis. The microtubule-associated proteins can be divided into two groups, structural and dynamic. The MAP proteins function to stimulate tubulin assembly, enhance microtubule stability, influence the spatial distribution of microtubules within cells and utilize microtubule polarity to translocate cellular components.

Target Details

Gene ID: 213582

NCBI Accession: [NP_001074699](#)

UniProt: [Q3TRR0](#)

Application Details

Application Notes: IHC/IF (H,M,R) 1:750-1:1500/1:750-1:1500

Restrictions: For Research Use only

Handling

Format: Liquid

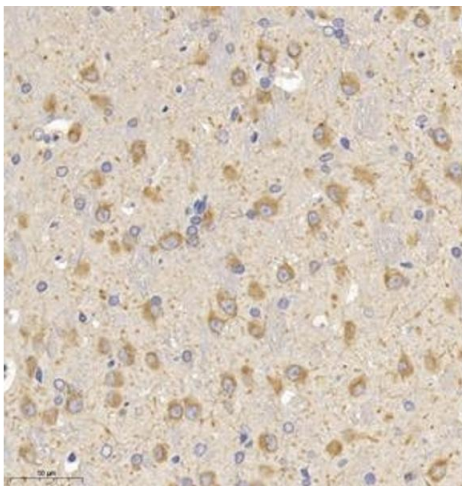
Buffer: PBS, pH 7.4, 0.02 % sodium azide

Preservative: Sodium azide

Precaution of Use: This product contains Sodium azide: a POISONOUS AND HAZARDOUS SUBSTANCE which should be handled by trained staff only.

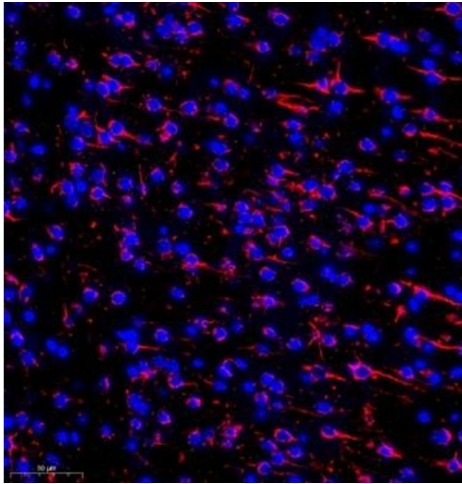
Storage: -20 °C

Images



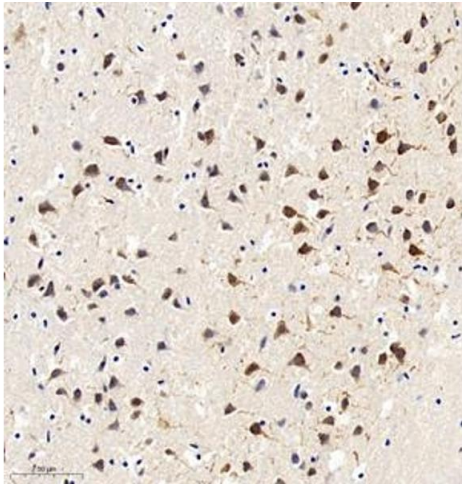
Immunohistochemistry (Paraffin-embedded Sections)

Image 1. Immunohistochemistry of paraffin embedded rat brain using MAP9 (ABIN7074622) at dilution of 1:750 (300x lens)



Immunofluorescence (Paraffin-embedded Sections)

Image 2. Immunofluorescence of paraffin embedded mouse brain using MAP9 (ABIN7074622) at dilution of 1:750 (300x lens)



Immunohistochemistry (Paraffin-embedded Sections)

Image 3. Immunohistochemistry of paraffin embedded mouse brain using MAP9 (ABIN7074622) at dilution of 1:750 (300x lens)