

Datasheet for ABIN7074631

anti-MCM4 antibody

3 Images

[Go to Product page](#)

Overview

Quantity:	100 µL
Target:	MCM4
Reactivity:	Mouse, Rat
Host:	Rabbit
Clonality:	Polyclonal
Conjugate:	This MCM4 antibody is un-conjugated
Application:	Western Blotting (WB), Immunohistochemistry (IHC), Immunofluorescence (IF)

Product Details

Immunogen:	KLH conjugated Synthetic peptide corresponding to Mouse MCM4
Cross-Reactivity:	Rat
Purification:	Affinity purification

Target Details

Target:	MCM4
Alternative Name:	MCM4 (MCM4 Products)
Background:	DNA replication licensing factor MCM4 (MCM4), also named Cdc21, acts as component of the MCM2-7 complex (MCM complex) which is the putative replicative helicase essential for 'once per cell cycle' DNA replication initiation and elongation in eukaryotic cells. The active ATPase sites in the MCM2-7 ring are formed through the interaction surfaces of two neighboring subunits such that a critical structure of a conserved arginine finger motif is provided in trans

Target Details

relative to the ATP-binding site of the Walker A box of the adjacent subunit. The six ATPase active sites, however, are likely to contribute differentially to the complex helicase activity. This antibody is a rabbit polyclonal antibody raised against the C-terminal 350 aa sequence of MCM4 protein.

Molecular Weight: 97 kDa

Gene ID: 17217

NCBI Accession: [NP_032591](#)

UniProt: [P49717](#)

Pathways: [DNA Damage Repair](#), [Mitotic G1-G1/S Phases](#), [DNA Replication](#), [Chromatin Binding](#), [Synthesis of DNA](#)

Application Details

Application Notes: WB (M,R) 1:2000-1:4000, IHC/IF (M,R) 1:1200-1:2400

Restrictions: For Research Use only

Handling

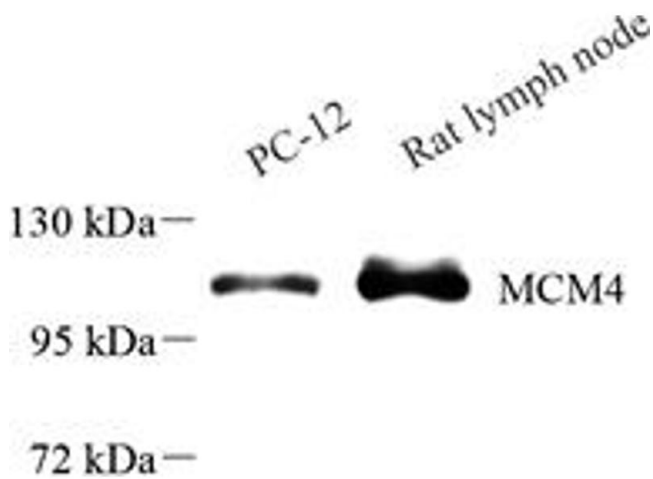
Format: Liquid

Buffer: PBS, pH 7.4, 0.02 % sodium azide

Preservative: Sodium azide

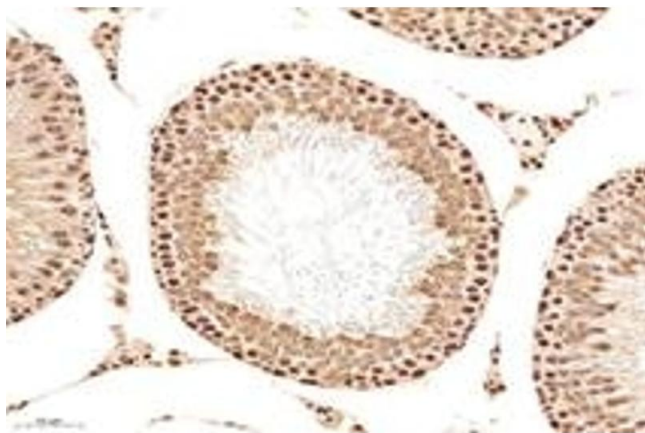
Precaution of Use: This product contains Sodium azide: a POISONOUS AND HAZARDOUS SUBSTANCE which should be handled by trained staff only.

Storage: -20 °C



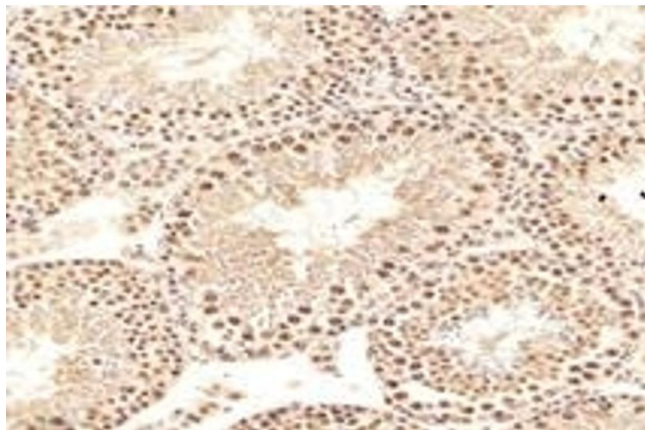
Western Blotting

Image 1. Western blot analysis of MCM4 (ABIN7074631), at dilution of 1: 4000



Immunohistochemistry (Paraffin-embedded Sections)

Image 2. Immunohistochemistry analysis of paraffin-embedded mouse testis using MCM4 (ABIN7074631) at dilution of 1: 2400



Immunohistochemistry (Paraffin-embedded Sections)

Image 3. Immunohistochemistry analysis of paraffin-embedded rat testis using MCM4 (ABIN7074631) at dilution of 1: 2400