

Datasheet for ABIN7074638

anti-MRPL12 antibody[Go to Product page](#)**2** Images

Overview

Quantity:	100 µL
Target:	MRPL12
Reactivity:	Human, Mouse, Rat
Host:	Rabbit
Clonality:	Polyclonal
Conjugate:	This MRPL12 antibody is un-conjugated
Application:	Western Blotting (WB), Immunohistochemistry (IHC), Immunofluorescence (IF)

Product Details

Immunogen:	KLH conjugated Synthetic peptide corresponding to Human MRPL12
Cross-Reactivity:	Mouse, Rat
Purification:	Affinity purification

Target Details

Target:	MRPL12
Alternative Name:	MRPL12 (MRPL12 Products)
Background:	MRPL12 is a component of the 39S subunit of mammalian mitochondrial ribosomes, and is encoded by a nuclear gene. The protein forms a homodimer, localizes predominantly to mitochondria and binds to the large mitochondrial ribosomal subunit. It is required for CycD/Cdk4- induced cell growth. In addition, forming a ribosomal stalk with MRPL7, MRPL12 is required for the recruitment of translation elongation factors Tu and G to the large ribosomal

Target Details

subunit . It also a part of a novel regulatory mechanism that coordinates mitochondrial transcription with translation and/or ribosome biogenesis during human mitochondrial gene expression.

Molecular Weight: 21 kDa

Gene ID: 56282

NCBI Accession: [NP_081480](#)

UniProt: [Q9DB15](#)

Application Details

Application Notes: WB (M,R) 1: 500-1: 1000, IHC/IF (H) 1:500-1:1000

Restrictions: For Research Use only

Handling

Format: Liquid

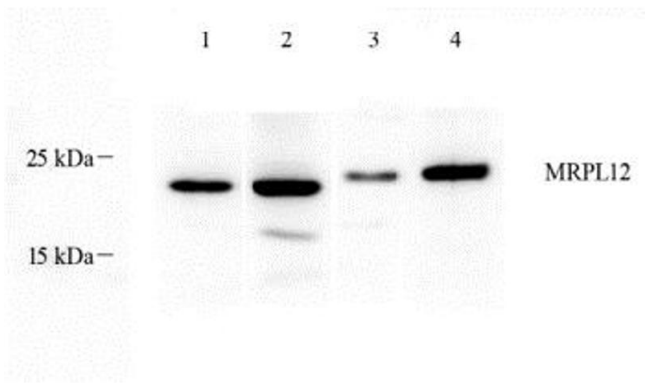
Buffer: PBS, pH 7.4, 0.02 % sodium azide

Preservative: Sodium azide

Precaution of Use: This product contains Sodium azide: a POISONOUS AND HAZARDOUS SUBSTANCE which should be handled by trained staff only.

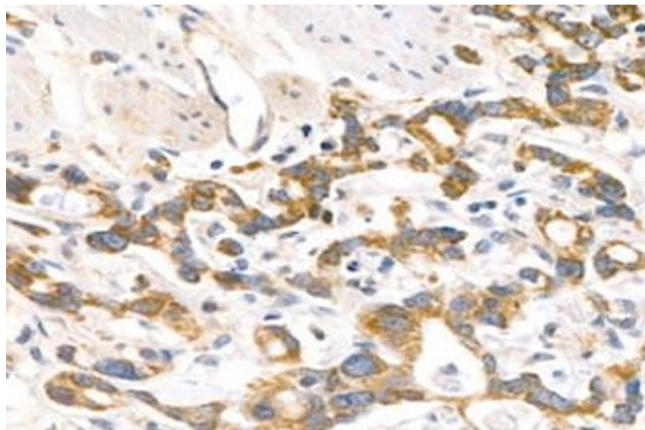
Storage: -20 °C

Images



Western Blotting

Image 1. Western blot analysis of MRPL12 (ABIN7074638) at dilution of 1: 1000, Lane 1: Mouse stomach tissue lysate, Lane 2: Mouse colon tissue lysate, Lane 3: Rat breast tissue lysate, Lane 4: Rat stomach tissue lysate



Immunohistochemistry (Paraffin-embedded Sections)

Image 2. Immunohistochemistry analysis of paraffin-embedded human stomach cancer using MRPL12 (ABIN7074638) at dilution of 1: 1000