

Datasheet for ABIN7074649

anti-MRPL51 antibody[Go to Product page](#)**2** Images

Overview

Quantity:	100 µL
Target:	MRPL51
Reactivity:	Mouse, Rat
Host:	Rabbit
Clonality:	Polyclonal
Conjugate:	This MRPL51 antibody is un-conjugated
Application:	Immunohistochemistry (IHC), Immunofluorescence (IF)

Product Details

Immunogen:	KLH conjugated Synthetic peptide corresponding to Mouse MRPL51
Cross-Reactivity:	Rat
Purification:	Affinity purification

Target Details

Target:	MRPL51
Alternative Name:	MRPL51 (MRPL51 Products)
Background:	Mammalian mitochondrial ribosomal proteins are encoded by nuclear genes and help in protein synthesis within the mitochondrion. Mitochondrial ribosomes (mitoribosomes) consist of a small 28S subunit and a large 39S subunit. They have an estimated 75 % protein to rRNA composition compared to prokaryotic ribosomes, where this ratio is reversed. Another difference between mammalian mitoribosomes and prokaryotic ribosomes is that the latter

Target Details

contain a 5S rRNA. Among different species, the proteins comprising the mitoribosome differ greatly in sequence, and sometimes in biochemical properties, which prevents easy recognition by sequence homology. This gene encodes a putative 39S subunit protein and belongs to the L47P ribosomal protein family.

Gene ID: 66493

NCBI Accession: [NP_079871](#)

UniProt: [Q9CPY1](#)

Application Details

Application Notes: IHC/IF (M,R) 1:2000-1:4000

Restrictions: For Research Use only

Handling

Format: Liquid

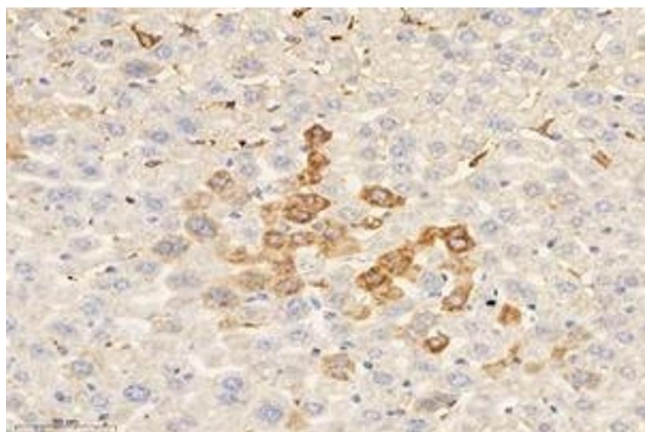
Buffer: PBS, pH 7.4, 0.02 % sodium azide

Preservative: Sodium azide

Precaution of Use: This product contains Sodium azide: a POISONOUS AND HAZARDOUS SUBSTANCE which should be handled by trained staff only.

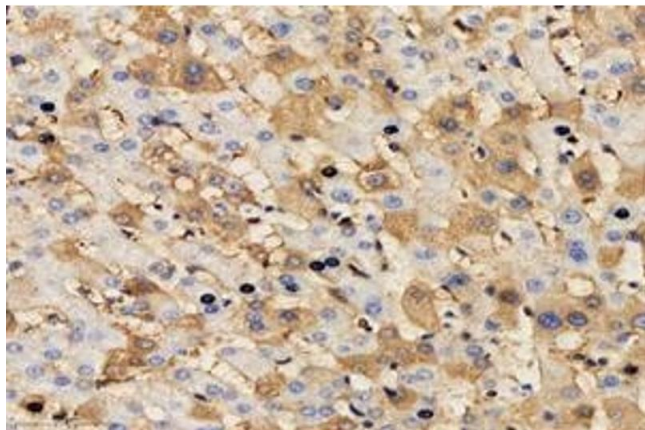
Storage: -20 °C

Images



Immunohistochemistry (Paraffin-embedded Sections)

Image 1. Immunohistochemistry analysis of paraffin-embedded mouse liver using MRPL51 (ABIN7074649) at dilution of 1: 4000



Immunohistochemistry (Paraffin-embedded Sections)

Image 2. Immunohistochemistry analysis of paraffin-embedded human liver using,MRPL51 (ABIN7074649) at dilution of 1: 4000