

Datasheet for ABIN7074655

**anti-MRPS35 antibody****3** Images[Go to Product page](#)

## Overview

|              |  |
|--------------|--|
| Quantity:    | 100 µL   |
| Target:      | MRPS35   |
| Reactivity:  | Human, Mouse, Rat  |
| Host:        | Rabbit   |
| Clonality:   | Polyclonal   |
| Conjugate:   | This MRPS35 antibody is un-conjugated                                      |
| Application: | Western Blotting (WB), Immunohistochemistry (IHC), Immunofluorescence (IF) |

## Product Details

|                   |  |
|-------------------|--|
| Immunogen:        | KLH conjugated Synthetic peptide corresponding to Mouse MRPS35 |
| Cross-Reactivity: | Human, Rat   |
| Purification:     | Affinity purification  |

## Target Details

|                   |   |
|-------------------|---|
| Target:           | MRPS35  |
| Alternative Name: | MRPS35 ( <a href="#">MRPS35 Products</a> )  |
| Background:       | MRPS35 (mitochondrial ribosomal protein S35), also known as MDS023, MRPS28 or HDCMD11P, is a 323 amino acid protein that localizes to the mitochondrion, where it exists as a component of the 28S ribosomal subunit and works in conjunction with other MRPs to mediate protein synthesis. Existing as two alternatively spliced isoforms, MRPS35 is encoded by a gene located on human chromosome 10, which houses over 1,200 genes and comprises |

## Target Details

nearly 4.5 % of the human genome. This antibody is a rabbit polyclonal antibody raised against the full length MRPS35 protein. It specifically reacts with the 37kd MRPS35protein.

|                   |                           |
|-------------------|---------------------------|
| Molecular Weight: | 36 kDa                    |
| Gene ID:          | 232536                    |
| NCBI Accession:   | <a href="#">NP_663548</a> |
| UniProt:          | <a href="#">Q8BJZ4</a>    |

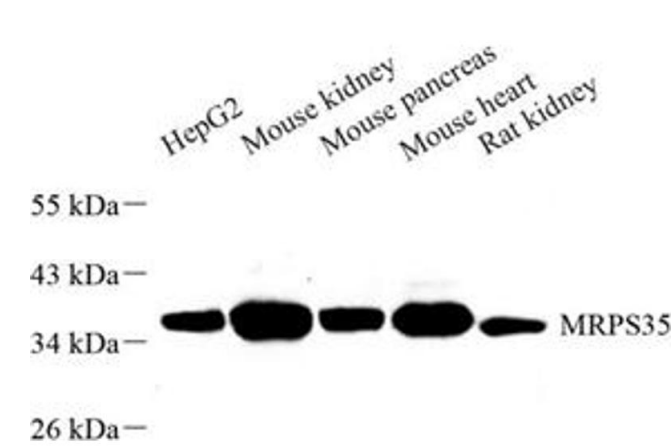
## Application Details

|                    |  |
|--------------------|--|
| Application Notes: | WB (H,M,R) 1:500-1:1000, IHC/IF (M,R) 1:400-1:1200 |
| Restrictions:      | For Research Use only                              |

## Handling

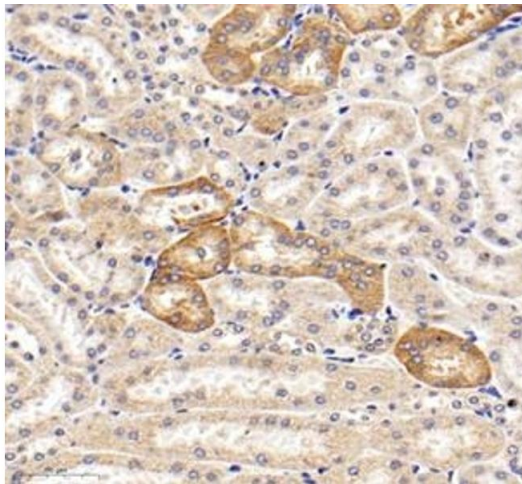
|                    |  |
|--------------------|--|
| Format:            | Liquid   |
| Buffer:            | PBS, pH 7.4, 0.02 % sodium azide   |
| Preservative:      | Sodium azide   |
| Precaution of Use: | This product contains Sodium azide: a POISONOUS AND HAZARDOUS SUBSTANCE which should be handled by trained staff only. |
| Storage:           | -20 °C   |

## Images



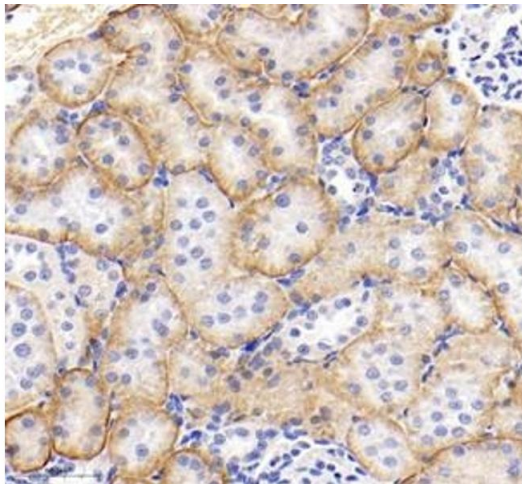
### Western Blotting

**Image 1.** Western blot analysis of MRPS35 (ABIN7074655) at dilution of 1: 500



#### Immunohistochemistry (Paraffin-embedded Sections)

**Image 2.** Immunohistochemistry of paraffin embedded mouse kidney using MRPS35 (ABIN7074655) at dilution of 1: 400 (300x lens)



#### Immunohistochemistry (Paraffin-embedded Sections)

**Image 3.** Immunohistochemistry of paraffin embedded rat kidney using MRPS35 (ABIN7074655) at dilution of 1: 400 (300x lens)