

Datasheet for ABIN7074679
anti-MAP3K12 antibody



[Go to Product page](#)

1 Image

Overview

Quantity:	100 µL
Target:	MAP3K12
Reactivity:	Human
Host:	Rabbit
Clonality:	Polyclonal
Conjugate:	This MAP3K12 antibody is un-conjugated
Application:	Immunohistochemistry (IHC), Immunofluorescence (IF)

Product Details

Immunogen:	Recombinant protein corresponding to Mouse MAP3K12
Cross-Reactivity:	Human
Purification:	Affinity purification

Target Details

Target:	MAP3K12
Alternative Name:	MAP3K12 (MAP3K12 Products)
Background:	<p>This gene encodes a member of the serine/threonine protein kinase family. This kinase contains a leucine-zipper domain and is predominately expressed in neuronal cells. The phosphorylation state of this kinase in synaptic terminals was shown to be regulated by membrane depolarization via calcineurin. This kinase forms heterodimers with leucine zipper containing transcription factors, such as cAMP responsive element binding protein (CREB) and</p>

Target Details

MYC, and thus may play a regulatory role in PKA or retinoic acid induced neuronal differentiation. Alternatively spliced transcript variants encoding different proteins have been described.

Gene ID: 26404

UniProt: [Q60700](#)

Pathways: [MAPK Signaling](#)

Application Details

Application Notes: IHC/IF (H) 1:200-1:400

Restrictions: For Research Use only

Handling

Format: Liquid

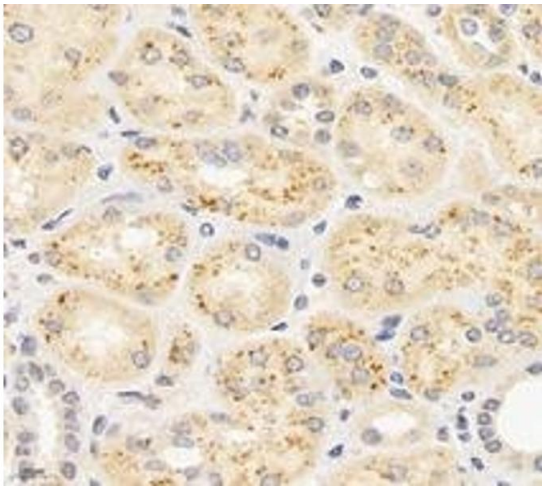
Buffer: PBS, pH 7.4, 0.02 % sodium azide

Preservative: Sodium azide

Precaution of Use: This product contains Sodium azide: a POISONOUS AND HAZARDOUS SUBSTANCE which should be handled by trained staff only.

Storage: -20 °C

Images



Immunohistochemistry (Paraffin-embedded Sections)

Image 1. Immunohistochemistry analysis of paraffin-embedded human kidney using,MAP3K12 (ABIN7074679) at dilution of 1: 400