

Datasheet for ABIN7074695  
**anti-MADCAM1 antibody**

13 Images

[Go to Product page](#)

## Overview

Quantity:	100 µL
Target:	MADCAM1
Reactivity:	Human, Mouse, Rat
Host:	Rabbit
Clonality:	Polyclonal
Conjugate:	This MADCAM1 antibody is un-conjugated
Application:	Immunohistochemistry (IHC), Immunofluorescence (IF)

## Product Details

Immunogen:	KLH conjugated Synthetic peptide corresponding to Mouse MAdCAM1
Cross-Reactivity:	Human, Rat
Purification:	Affinity purification

## Target Details

Target:	MADCAM1
Alternative Name:	MAdCAM1 ( <a href="#">MADCAM1 Products</a> )
Background:	MAdCAM-1 is an immunoglobulin (Ig) cell adhesion molecule family member. MAdCAM-1 is involved in lymphocyte homing to mucosal sites and is expressed on high endothelial venules (HEV) of both mesenteric lymph nodes and Peyer's patches. It has also been found to be expressed on sinus-lining cells of the spleen. The integrin, alpha 4 beta 7, has been shown to function as the MAdCAM-1 receptor. The Ig domains of MAdCAM-1 have been found to be

## Target Details

critical to alpha 4 beta 7 binding. The mucin domain has been shown to have activity in L-Selectin binding.

UniProt: [Q61826](#)

## Application Details

Application Notes: IHC/IF (H,M,R) 1:1000-1:3000/1:500-1:3000

Restrictions: For Research Use only

## Handling

Format: Liquid

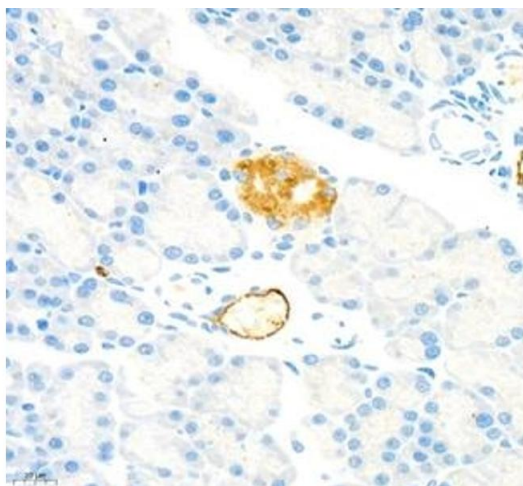
Buffer: PBS, pH 7.4, 0.02 % sodium azide

Preservative: Sodium azide

Precaution of Use: This product contains Sodium azide: a POISONOUS AND HAZARDOUS SUBSTANCE which should be handled by trained staff only.

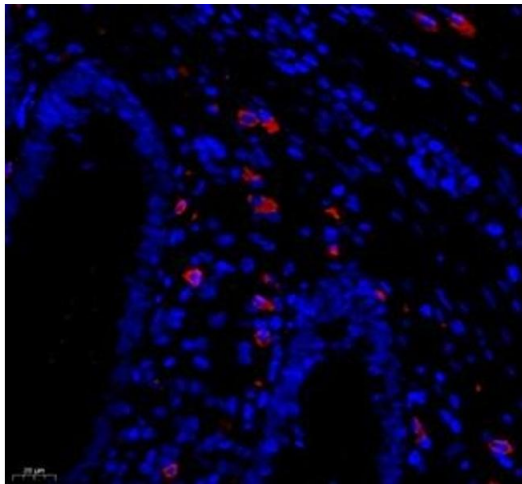
Storage: -20 °C

## Images



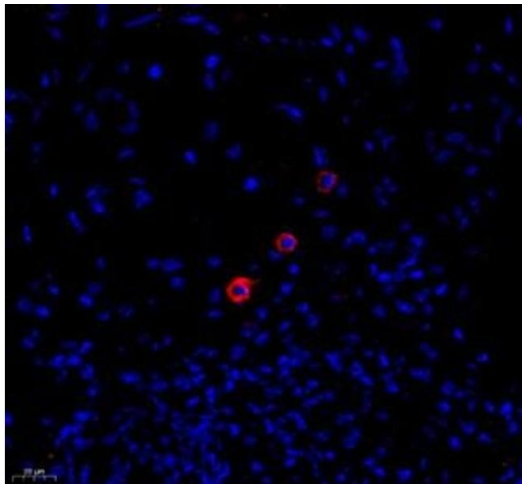
### Immunohistochemistry (Paraffin-embedded Sections)

**Image 1.** Immunohistochemistry of paraffin embedded rat pancreatic using MADCAM1 (ABIN7074695) at dilution of 1:1800 (400x lens)



#### Immunofluorescence (Paraffin-embedded Sections)

**Image 2.** Immunofluorescence of paraffin embedded human appendix using MADCAM1 (ABIN7074695) at dilution of 1:1800 (400x lens)



#### Immunofluorescence (Paraffin-embedded Sections)

**Image 3.** Immunofluorescence of paraffin embedded human colon using MADCAM1 (ABIN7074695) at dilution of 1:1800 (400x lens)

Please check the [product details page](#) for more images. Overall 13 images are available for ABIN7074695.