



Datasheet for ABIN7074712

anti-MLF1 antibody

3 Images



[Go to Product page](#)

Overview

Quantity:	100 µL
Target:	MLF1
Reactivity:	Mouse, Rat
Host:	Rabbit
Clonality:	Polyclonal
Conjugate:	This MLF1 antibody is un-conjugated
Application:	Western Blotting (WB), Immunohistochemistry (IHC), Immunofluorescence (IF)

Product Details

Immunogen:	Recombinant protein corresponding to Mouse Myeloid leukemia factor 1
Cross-Reactivity:	Rat
Purification:	Affinity purification

Target Details

Target:	MLF1
Alternative Name:	Myeloid leukemia factor 1 (MLF1 Products)
Background:	Involved in lineage commitment of primary hemopoietic progenitors by restricting erythroid formation and enhancing myeloid formation. Interferes with erythropoietin-induced erythroid terminal differentiation by preventing cells from exiting the cell cycle through suppression of CDKN1B/p27Kip1 levels. Suppresses RFW2/COP1 activity via CSN3 which activates p53 and induces cell cycle arrest. Binds DNA and affects the expression of a number of genes so may

Target Details

function as a transcription factor in the nucleus.

Molecular Weight: 31 kDa

Gene ID: 17349

NCBI Accession: [NP_034931](#)

UniProt: [Q9QWV4](#)

Application Details

Application Notes: WB (M,R) 1:500-1:1000, IHC/IF (M,R) 1:1000-1:3000

Restrictions: For Research Use only

Handling

Format: Liquid

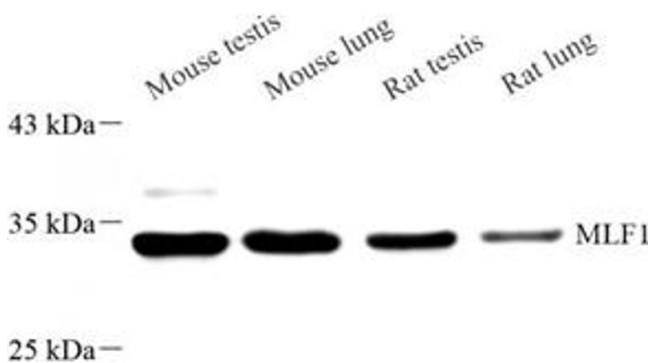
Buffer: PBS, pH 7.4, 0.02 % sodium azide

Preservative: Sodium azide

Precaution of Use: This product contains Sodium azide: a POISONOUS AND HAZARDOUS SUBSTANCE which should be handled by trained staff only.

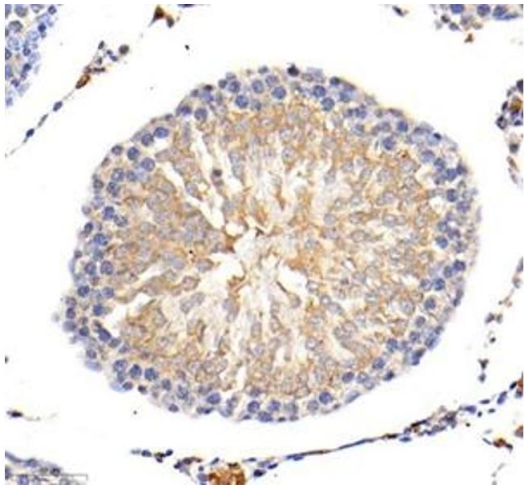
Storage: -20 °C

Images



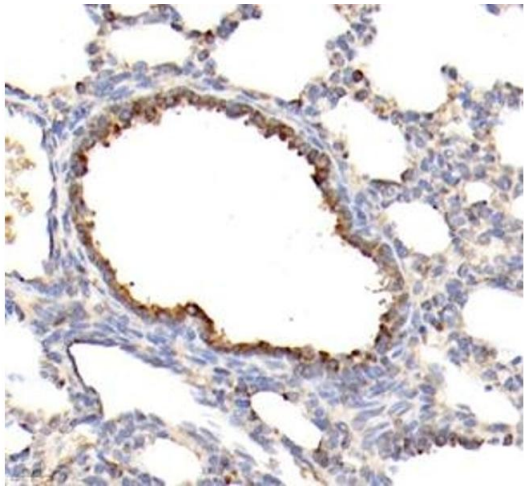
Western Blotting

Image 1. Western blot analysis of MLF1 (ABIN7074712) at dilution of 1: 500



Immunohistochemistry (Paraffin-embedded Sections)

Image 2. Immunohistochemistry of paraffin embedded mouse lung using MLF1 (ABIN7074712) at dilution of 1: 1500 (400x lens)



Immunohistochemistry (Paraffin-embedded Sections)

Image 3. Immunohistochemistry of paraffin embedded rat testis using MLF1 (ABIN7074712) at dilution of 1: 1500 (400x lens)