

Datasheet for ABIN7074729

anti-MYBPC3 antibody**2** Images[Go to Product page](#)

Overview

| | |
|--------------|---|
| Quantity: | 100 µL |
| Target: | MYBPC3 |
| Reactivity: | Rat, Mouse |
| Host: | Rabbit |
| Clonality: | Polyclonal |
| Conjugate: | This MYBPC3 antibody is un-conjugated |
| Application: | Immunohistochemistry (IHC), Immunofluorescence (IF) |

Product Details

| | |
|-------------------|--|
| Immunogen: | KLH conjugated Synthetic peptide corresponding to Mouse MYBPC3 |
| Cross-Reactivity: | Rat |
| Purification: | Affinity purification |

Target Details

| | |
|-------------------|---|
| Target: | MYBPC3 |
| Alternative Name: | MYBPC3 (MYBPC3 Products) |
| Background: | MYBPC3 belongs to the immunoglobulin superfamily and MyBP family. MYBPC3 located in the crossbridge region of vertebrate striated muscle a bands. In vitro it binds MHC, F-actin and native thin filaments, and modifies the activity of actin-activated myosin ATPase. It may modulate muscle contraction or may play a more structural role. Defects in MYBPC3 are the cause of cardiomyopathy familial hypertrophic type 4 (CMH4). The antibody detects the full |

Target Details

length form and the degradation bands around 28-54 kDa in SDS-PAGE.

UniProt: [O70468](#)

Application Details

Application Notes: IHC/IF (M,R) 1:1000-1:2000

Restrictions: For Research Use only

Handling

Format: Liquid

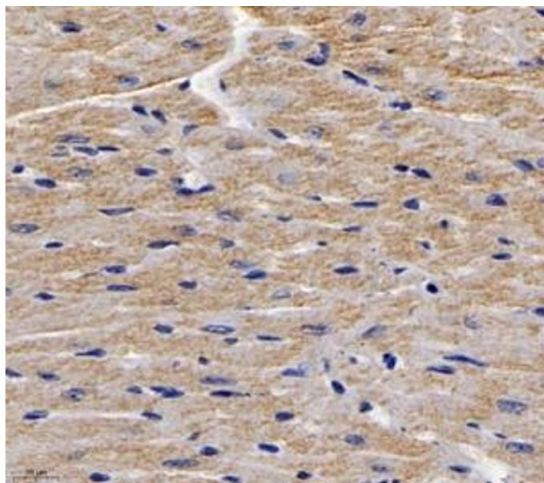
Buffer: PBS, pH 7.4, 0.02 % sodium azide

Preservative: Sodium azide

Precaution of Use: This product contains Sodium azide: a POISONOUS AND HAZARDOUS SUBSTANCE which should be handled by trained staff only.

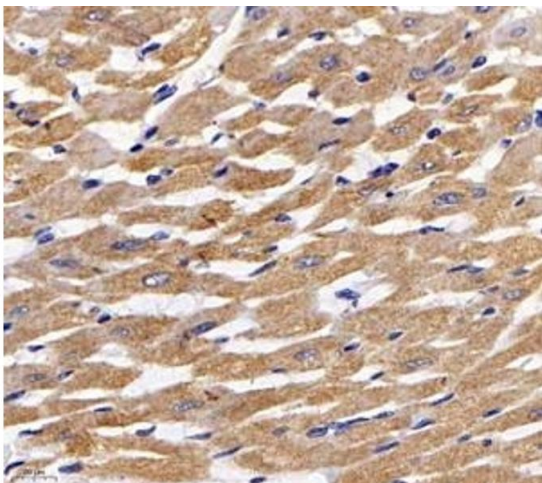
Storage: -20 °C

Images



Immunohistochemistry (Paraffin-embedded Sections)

Image 1. Immunohistochemistry analysis of paraffin-embedded mouse heart using MYBPC3 (ABIN7074729) at dilution of 1: 2000



Immunofluorescence (fixed cells)

Image 2. Immunofluorescent analysis of paraformaldehyde-fixed rat heart using MYBPC3 (ABIN7074729) at dilution of 1: 2000