



Datasheet for ABIN7074734  
**anti-MYL6 antibody**



[Go to Product page](#)

11 Images

### Overview

Quantity:	100 µL
Target:	MYL6
Reactivity:	Human, Mouse, Rat
Host:	Rabbit
Clonality:	Polyclonal
Conjugate:	This MYL6 antibody is un-conjugated
Application:	Immunohistochemistry (IHC), Immunofluorescence (IF)

### Product Details

Immunogen:	Recombinant protein corresponding to Mouse MYL6
Cross-Reactivity:	Human, Rat
Purification:	Affinity purification

### Target Details

Target:	MYL6
Alternative Name:	MYL6 ( <a href="#">MYL6 Products</a> )
Background:	Regulatory light chain of myosin. Does not bind calcium.
Gene ID:	17904
UniProt:	<a href="#">Q60605</a>

## Application Details

Application Notes: IHC/IF (H,M,R) 1:500-1:4000/1:650-1:1300

Restrictions: For Research Use only

## Handling

Format: Liquid

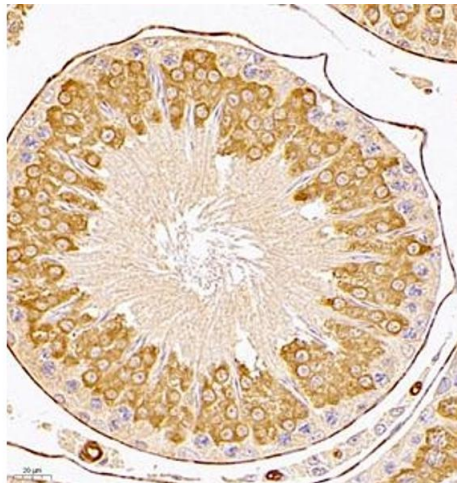
Buffer: PBS, pH 7.4, 0.02 % sodium azide

Preservative: Sodium azide

Precaution of Use: This product contains Sodium azide: a POISONOUS AND HAZARDOUS SUBSTANCE which should be handled by trained staff only.

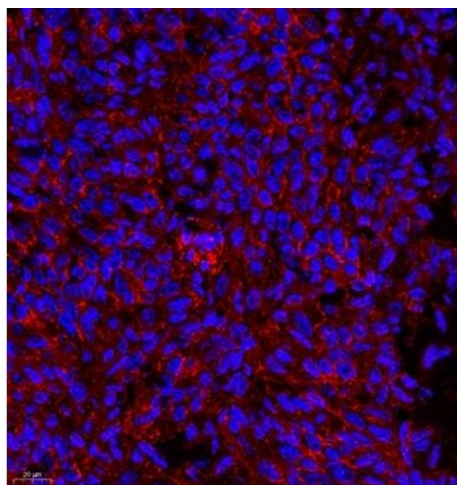
Storage: -20 °C

## Images



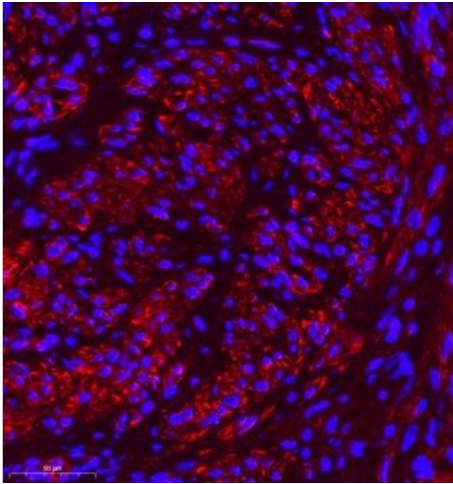
### Immunohistochemistry (Paraffin-embedded Sections)

**Image 1.** Immunohistochemistry of paraffin embedded rat testis using MYL6 (ABIN7074734) at dilution of 1:650 (400x lens)



### Immunofluorescence (Paraffin-embedded Sections)

**Image 2.** Immunofluorescence of paraffin embedded human bladder cancer using MYL6 (ABIN7074734) at dilution of 1:650 (400x lens)



### Immunofluorescence (Paraffin-embedded Sections)

**Image 3.** Immunofluorescence of paraffin embedded human cervical cancer using MYL6 (ABIN7074734) at dilution of 1:650 (400x lens)

Please check the [product details page](#) for more images. Overall 11 images are available for ABIN7074734.